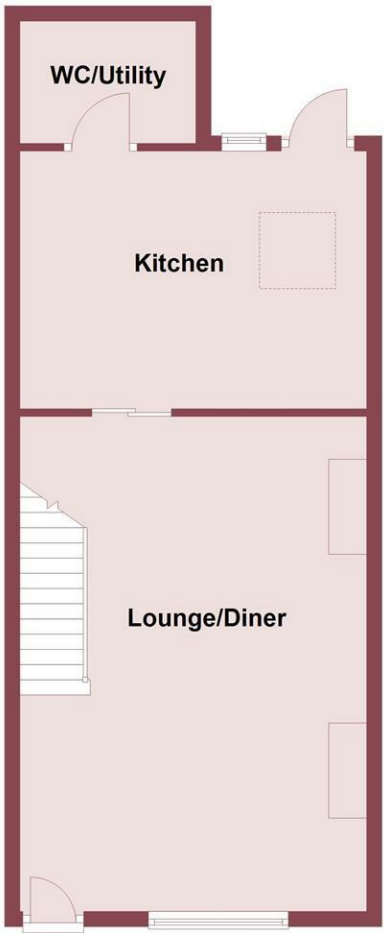
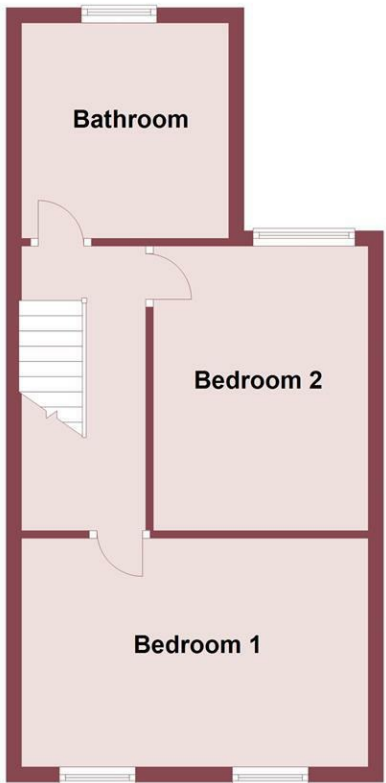




Ground Floor



First Floor



Shaw Street, Hoylake, CH47 2BN

£1,075 PCM

 2 Bedroom  1 Reception  1 Bathroom  2 Bedroom

*** Walk In Wow Factor - Incredible Specification - Not To Be Missed ***

Hewitt Adams is delighted to offer TO LET this incredible, and extended Two Bedroom Mid Terrace House on Shaw Street, Hoylake, which is in catchment area of Caldy Grammar School, West Kirby Grammar school and has a wide selection of outstanding primary schools and nurseries within easy reach. There are excellent bus and trains allows, direct access to Chester and Liverpool.

The property has been completely refurbished by the owners, to create a fantastic modern property, finished to an incredible specification.

The flooring and walls have been insulated to increase the EPC and reduce running costs, the new EPC will be updated soon.

In brief the property consists of: Lounge/Diner, Kitchen, WC and Utility Area, two Bedrooms and a Bathroom.

Externally there is on street Parking and a Courtyard.

Lounge/Diner

24'06 x 13'10 (7.47m x 4.22m)

Composite front door to living room, two central heating radiators, tiled flooring, inset spotlights, stairs to first floor, fitted desk, sliding door to kitchen.

Kitchen

13'08 x 10'00 (4.17m x 3.05m)

A stunning kitchen comprising a range of well appointed wall and base units with complementary work surfaces incorporating one and half sink and drainer, integrated Bosch appliances include fridge/freezer, cooker, induction hob, dishwasher, electric Velux window, window to rear and door to utility and courtyard.

WC/Utility

6'00 x 5'11 (1.83m x 1.80m)

WC, wash hand basin with vanity, inset spotlights on a PIR sensor , central heating radiator, washing machine and tumble dryer.

Landing

Inset spotlights on a PIR sensor, loft access hatch, doors to;

Bedroom 1

13'10 x 12'10 (4.22m x 3.91m)

Two windows to front elevation, central heating radiator, fitted wardrobes and dressing table.

Bedroom 2

11'08 x 8'05 (3.56m x 2.57m)

Window to rear aspect, central heating radiator.

Bathroom

9'03 x 7'08 (2.82m x 2.34m)

A spacious and fully tiled bathroom comprising; WC, wash hand basin with vanity, bath with thermostatic showers, inset spotlights, heated towel radiator, window to rear aspect.

Externally - Front Elevation

On Street Parking.

Externally - Rear Elevation

A Courtyard, which is fenced with gated access to the rear and had a shed.

