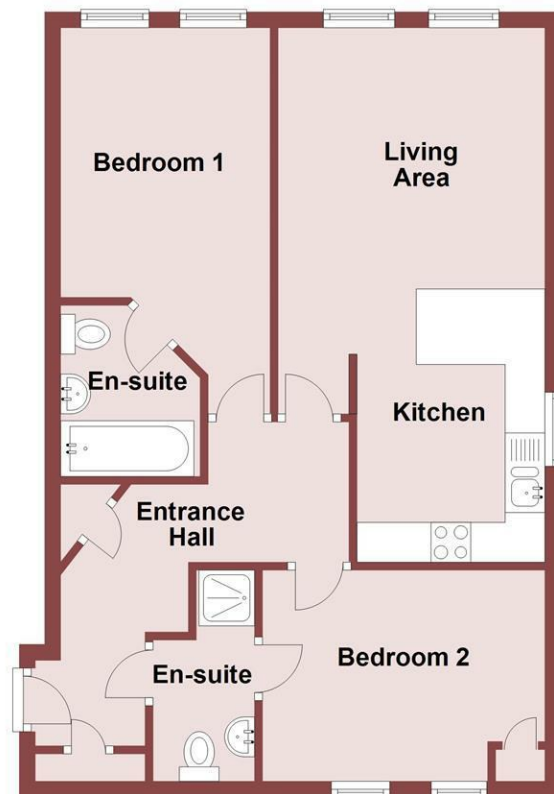




Ground Floor



Whilst every attempt has been made to ensure the accuracy of this floor plan, measurements of doors, windows, rooms and any other items are approximate and no responsibility is taken for any error, omission or mis-statement. The plan is for illustrative purposes only and should be used as such by any prospective purchaser. The services, systems and appliances shown here have not been tested and no guarantee to their operability or efficiency can be given.  
Plan produced using PlanUp.

## Pye Road, Wirral, Merseyside CH60 0DB

£159,000

🛏 2 Bedroom    🛋 1 Reception    🚿 2 Bathroom    📊

**\*\*Two Bedroom Apartment - Central Heswall Location - Excellent Condition - Recently Decorated - Ideal First Time Buy or Investment - Allocated Parking - Sold With No Chain\*\***

Hewitt Adams is delighted to offer to the market this **STYLISH & MODERN** two bedroom Apartment in the centre of Heswall on Pye Road.

The apartment is located a short walk from **SHOPS, RESTAURANTS** and **TRANSPORT LINKS**.

The property is sold with **NO ONWARD CHAIN**.

Due to its **CONVENIENT LOCATION** - the Apartment would be ideal for **FIRST TIME BUYERS, DOWNSIZERS** or even **INVESTORS**.

In brief the accommodation affords: entrance hall, lounge, kitchen, two bedrooms - the master and second bedroom both enjoying en-suite facilities. With allocated parking spaces outside. Sold With No Chain!

Call Hewitt Adams on 0151 342 8200 to view this fantastic town centre apartment.

**Front Entrance**

Into:

**Hall**

Radiator, power points

**Lounge & Kitchen**

22'0" x 11'0" (6.72 x 3.36)

Double glazed window, radiator, power points, TV point, opens into:

Kitchen with wall and base units, inset sink, integrated oven and hob, integrated fridge and freezer, peninsula breakfast bar, Velux window

**Bedroom One**

6'6" x 9'4" (2.00 x 2.87)

Double glazed windows, radiator, power points, door into:

**En-Suite**

Shower, low level W.C, wash hand basin, radiator

**Bedroom Two**

8'8" x 11'7" (2.65 x 3.55)

Double glazed windows, radiator, power points, door into:

**En-Suite**

Bath, low level W.C, wash hand basin, radiator

**Further Information**

£60 pcm service charge

999 year lease from 2005

