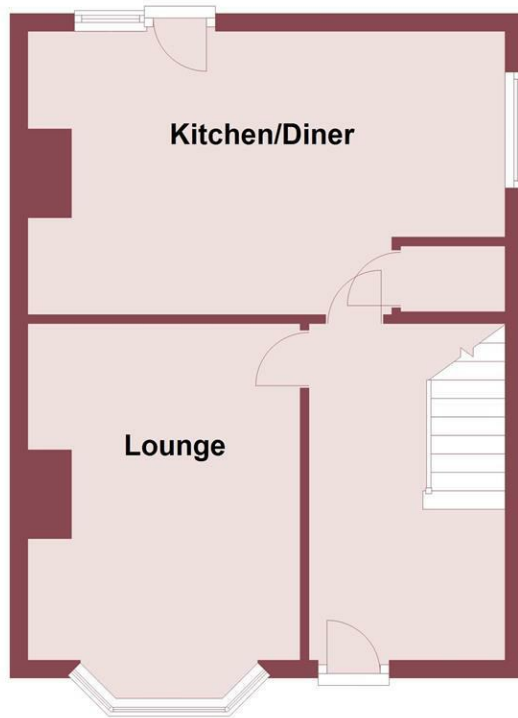
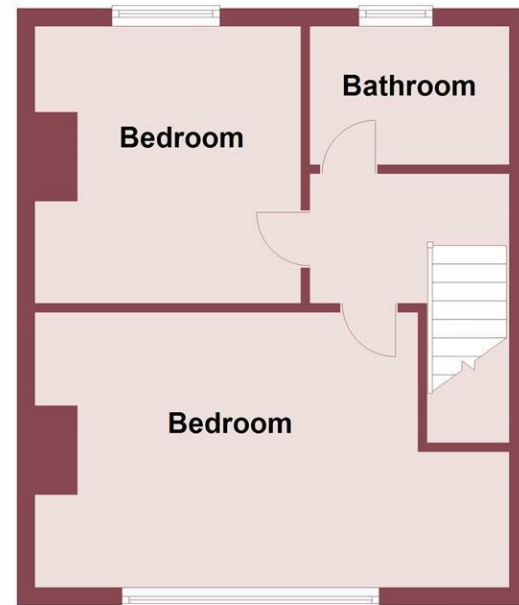




Ground Floor



First Floor



Whilst every attempt has been made to ensure the accuracy of this floor plan, measurements of doors, windows, rooms and any other items are approximate and no responsibility is taken for any error, omission or mis-statement. The plan is for illustrative purposes only and should be used as such by any prospective purchaser. The services, systems and appliances shown here have not been tested and no guarantee to their operability or efficiency can be given.
Plan produced using PlanUp.

Vernon Avenue, Wallasey, Wirral CH44 7ES

£100,000

🛏️ 2 Bedroom 🛋️ 1 Reception 🚿 1 Bathroom 📊 D

****Two Bedroom Semi - Popular Wallasey Location - Ideal First Time Buy / Investment****

Hewitt Adams welcomes to the market this TWO BEDROOM semi-detached property on Vernon Avenue.

The property benefits from gas central heating, double glazing and offers a private rear garden / yard.

These properties are very popular with first time buyers looking to get onto the ladder, or are IDEAL FOR INVESTMENT. This property is currently rented out to a tenant who is very happy on the property and has kept it well maintained - it therefore would make for a great TURN-KEY investment for somebody.

We have been advised by the landlord the current tenant is paying £530 PCM on an AST.

In brief the accommodation affords; entrance hall, lounge, open-aspect kitchen diner. Upstairs there are two bedrooms and a bathroom.

Call Hewitt Adams on 0151 342 8200 to view.

Front Entrance

Into:

Hall

Radiator, stairs to first floor

Lounge

10'0" x 12'5" (3.07 x 3.79)

Double glazed bay window, radiator, power point

Kitchen Diner

16'1" x 10'5" (4.91 x 3.19)

Wall and base units, inset sink, space and plumbing for washing machine, space for fridge freezer and cooker, space for dining table, double glazed window and door to rear yard

First Floor

Bedroom One

16'1" x 10'2" (4.91 x 3.10)

Double glazed window, radiator, power point

Bedroom Two

9'10" x 10'2" (3.00 x 3.12)

Double glazed window, radiator, power point

Bathroom

7'4" x 5'1" (2.25 x 1.56)

Sower over bath, w.c, wash hand basin, radiator

Externally

Front - on street parking

Rear - South facing rear yard with brick built outhouse and gated side access to the front

