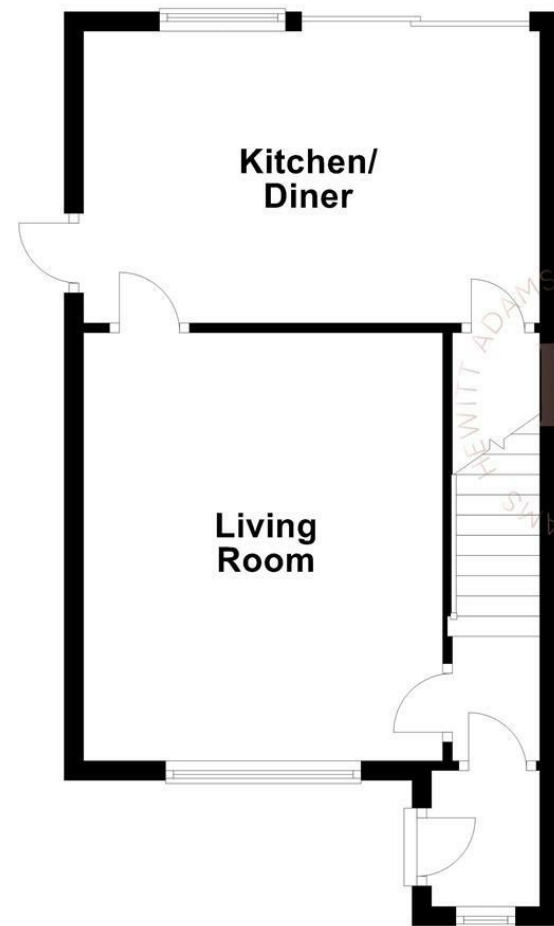
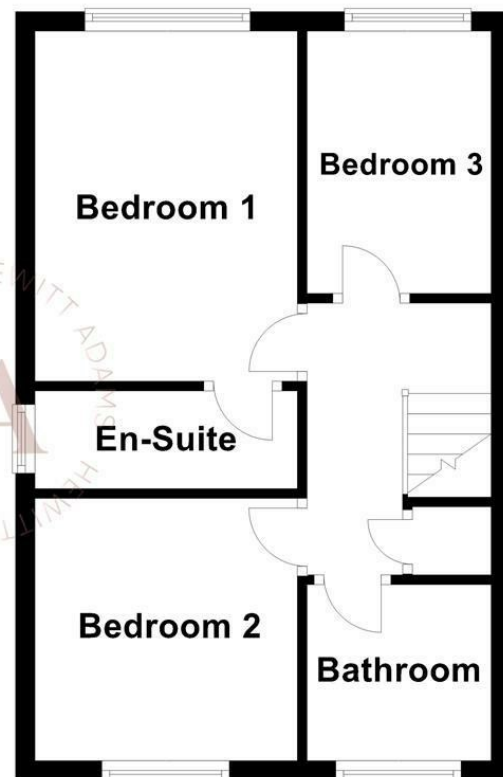




Ground Floor



First Floor



For illustration purposes only - not to scale

### Gleneagles Close, Pensby, Wirral CH61 5YF

£235,000

3 Bedroom 1 Reception 2 Bathroom C

**\*\*Three Bedroom Semi - No Chain - Freshly Decorated - Perfect First Time Buy - Must View\*\***

Hewitt Adams is delighted to offer to the market this THREE BEDROOMED semi-detached property located on the POPULAR and QUIET Gleneagles Close cul-de-sac.

The property is IDEAL FOR FIRST TIME BUYERS and comes to the market with NO ONWARD CHAIN!

Having been FRESHLY DECORATED, the property comes to the market in great condition.

In brief the accommodation affords; entrance porch, lounge, kitchen diner. Upstairs there are three bedrooms, one with an en-suite, and bathroom.

With off-road driveway parking, a detached garage and an easy to maintain patio garden.

Call Hewitt Adams on 0151 342 8200 to view this NO CHAIN property.

**Front Entrance**

Into;

**Hall**

Staircase, radiator

**Lounge**

11'9" x 14'1" (3.6 x 4.3)

Double glazed window, radiator, power points, fireplace, new carpeting

**Kitchen Diner**

15'1" x 10'5" (4.6 x 3.18)

Wall and base units, inset sink, space for washing machine, space for fridge freezer, integrated oven and hob, double glazed sliding door, side door, double glazed window, pantry

**UPSTAIRS**

**Bedroom One**

11'9" x 9'1" (3.6 x 2.77)

Double glazed window, radiator, power points, fresh carpeting, door into;

**En-Suite**

Comprising shower, low level w.c, wash hand basin, double glazed window

**Bedroom Two**

8'10" x 8'11" (2.7 x 2.73)

Double glazed window, radiator, power points, fresh carpeting

**Bedroom Three**

9'10" x 6'0" (max) (3.00 x 1.85 (max))

Double glazed window, radiator, power points, fresh carpeting

**Bathroom**

Comprising bath, low level w.c, wash hand basin, double glazed window, new vinyl flooring

**EXTERNALLY**

Front Aspect - Large Driveway with parking for 2/3 cars.

Access to the rear detached garage. Side gate access to garden.

Rear Aspect - Generously sized, easy to maintain garden laid to patio.

