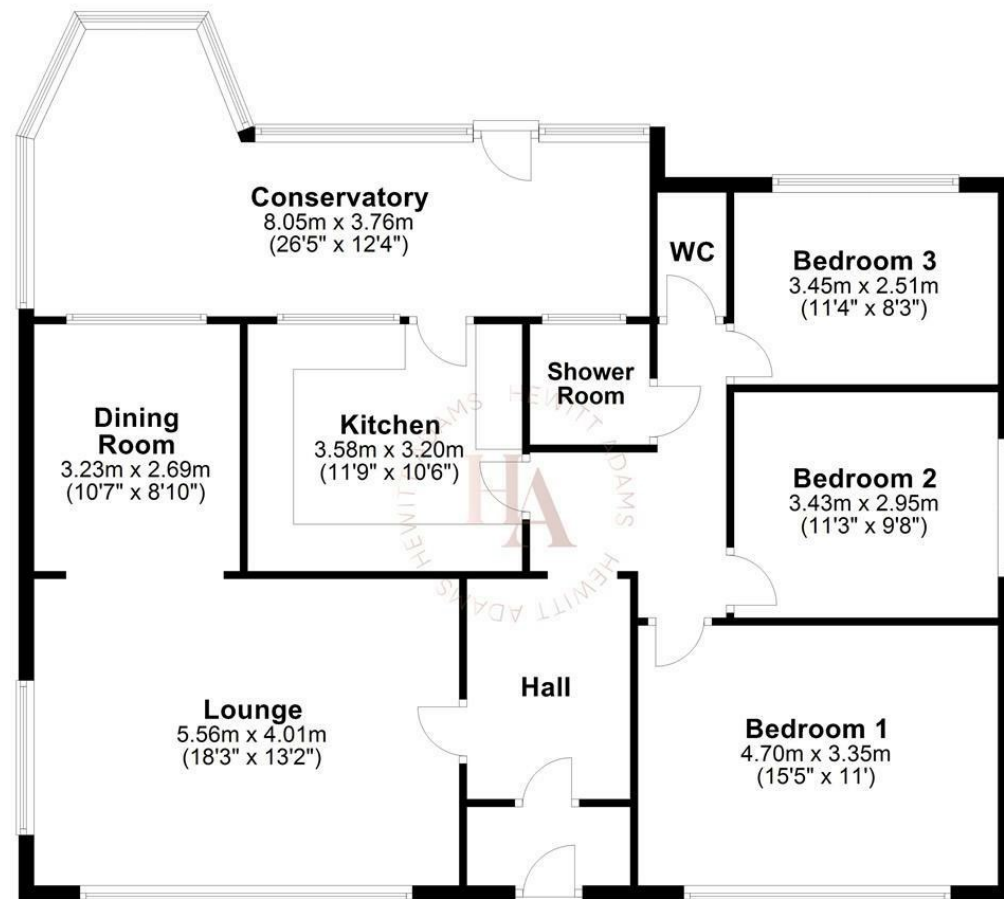




Ground Floor

Approx. 122.2 sq. metres (1315.5 sq. feet)



Total area: approx. 122.2 sq. metres (1315.5 sq. feet)
For illustration purposes only - not to scale



Dalesway, Heswall, Wirral CH60 4RU
Offers In The Region Of £625,000

3 Bedroom 2 Reception 1 Bathroom

****Three Bedroom Detached Bungalow - Sought After Lower Heswall - Estuary Views - Southerly Facing****

Hewitt Adams is delighted to offer to the market this impressive THREE BEDROOM detached bungalow located on the HIGHLY POPULAR Dalesway in Lower Heswall.

Occupying a generous CORNER PLOT - the bungalow enjoys a SOUTHERLY FACING ASPECT and also boasts ESTUARY VIEWS.

In brief the accommodation affords: porch, hall, lounge, dining room, kitchen, three bedrooms, shower-room, W.C and a conservatory.

With a generous driveway, WRAP-AROUND GARDENS and a detached garage.

Call Hewitt Adams on 0151 342 8200 to view.

Front Entrance

Into:

Porch

Door into:

Hall

Radiator, power points

Lounge

Double glazed windows, radiator, power points. With ESTUARY VIEWS. Gas fireplace

Dining Room

Currently set up as a study.
Double glazed window, radiator, power points

Kitchen

Wall and base units, inset sink, integrated oven and electric hob

Bedroom 1

Double glazed windows, radiator, power points

Bedroom 2

Double glazed windows, radiator, power points, integral wardrobes

Bedroom 3

Double glazed windows, radiator, power points

Shower-Room

In a wet-room style. With shower, towel rail and double glazed window

W.C.

W.C.

Conservatory

Radiator, power points, patio doors to rear garden

EXTERNALLY

With a generous driveway, WRAP-AROUND mature and established GARDENS with lawn, patio and a detached garage.

