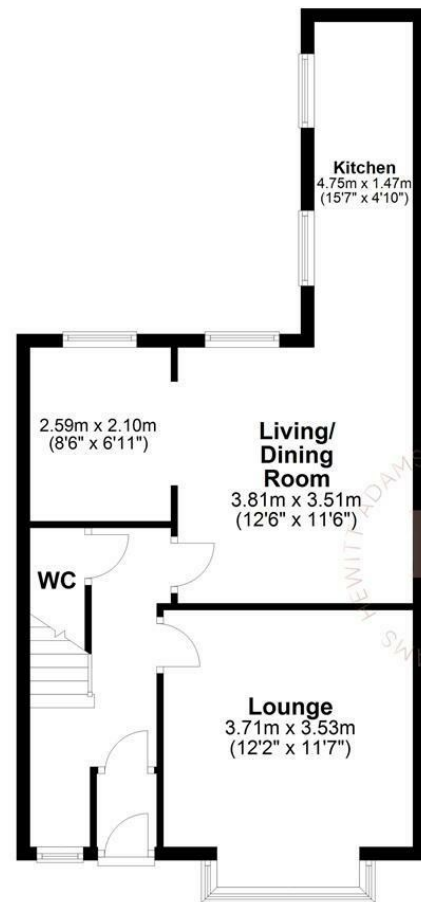
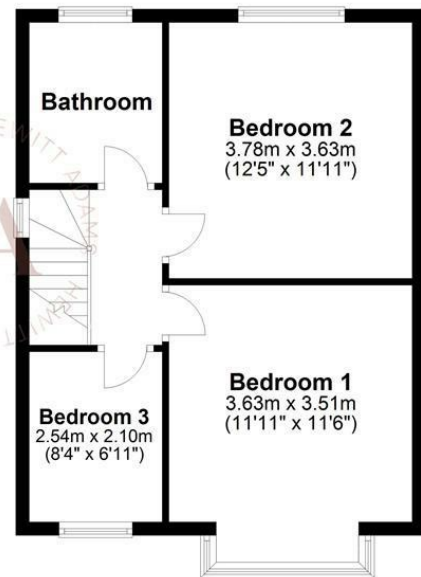




**Ground Floor**  
Approx. 50.9 sq. metres (547.5 sq. feet)



**First Floor**  
Approx. 44.0 sq. metres (473.4 sq. feet)



Total area: approx. 94.8 sq. metres (1020.9 sq. feet)  
For illustration purposes only - not to scale

## Radnor Avenue, Heswall, Wirral CH60 7ST

Offers Over £305,000

3 Bedroom 2 Reception 1 Bathroom D

**\*\*Attractive Period Semi - Heart of Heswall Location - Sold With No Onward Chain!\*\***

Hewitt Adams is pleased to offer to the market this THREE BEDROOM traditional style semi, located on the POPULAR Radnor Avenue in Heswall - a SHORT WALK FROM THE CENTRE OF HESWALL.

The property has been a much loved home, and comes to the market in good condition. With double glazed windows and gas central heating.

In brief the accommodation affords: entrance hall, lounge, kitchen diner with a separate snug/play-room, W.C. Upstairs there are three good-sized bedrooms and a bathroom.

With a good sized rear garden with patio and lawn. With a garden shed.

An ideally located property for FIRST TIME BUYERS, or anyone looking to be able to walk to all of Heswall's amenities in just a couple of minutes.

SOLD WITH NO CHAIN - Call Hewitt Adams on 0151 342 8200 to view.



**Front Entrance**

Into:

**Hall**

Staircase, radiator, power points

**Lounge**

Double glazed window with far reaching views, radiator, power points, fireplace, TV point

**Kitchen**

15'7" x 4'9" (4.75 x 1.47)

Fitted kitchen with wall and base units, inset sink, double glazed window. white goods

**Snug / Play-room**

8'2" x 6'10" (2.5 x 2.10)

Radiator, double glazed window, double glazed door to garden

**Dining Room**

12'5" x 11'6" (3.81 x 3.51)

Double glazed window, radiator, power power points, opens into both the kitchen and the snug/play-room

**W.C**

W.C

**UPSTAIRS**

**Bedroom One**

11'10" x 11'6" (3.63 x 3.51)

Double glazed window with far reaching views, radiator, power points, feature fireplace, wardrobes

**Bedroom Two**

12'4" x 11'10" (3.78 x 3.63)

Double glazed window, radiator, power points, feature fireplace, wall-mounted combi boiler

**Bedroom Three**

8'3" x 6'10" (2.54 x 2.10)

Double glazed window, radiator, power points

**Bathroom**

Comprising bath, low level w.c, wash hand basin, double glazed window

**EXTERNALLY**

Comprising patio, lawned garden. With a garden shed. Side gate access. Very private.

