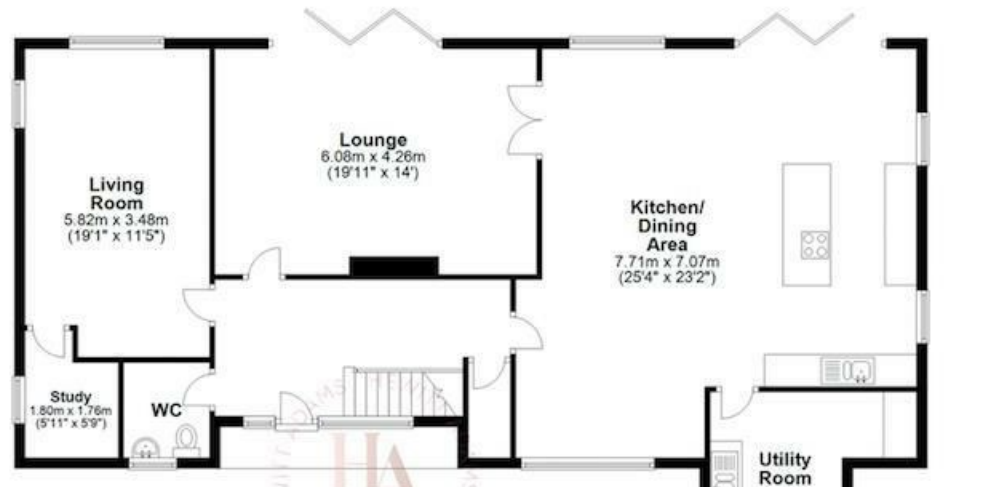




**Ground Floor**  
Approx. 159.6 sq. metres (1717.9 sq. feet)



**First Floor**  
Approx. 102.1 sq. metres (1098.8 sq. feet)



Total area: approx. 261.7 sq. metres (2816.7 sq. feet)  
For illustration purposes only - not to scale

## Baskervyle Close, Wirral, Wirral CH60 8QL

£935,000

4 Bedroom 2 Reception 3 Bathroom C

**\*\*Wow-Factor Family Home - Prestigious Lower Heswall Location - Extended & Renovated To A High Specification\*\***

Hewitt Adams is delighted to showcase this state of the art CONTEMPORARY detached family home located on the PRESTIGIOUS location of Baskervyle Close in Gayton. With modern RENDER and CLADDING the property is extremely AESTHETICALLY PLEASING with tremendous kerb-appeal.

The property has recently been EXTENDED and MODERNISED to an incredibly HIGH SPECIFICATION with stunning OPEN-PLAN Kitchen and family living spaces, LUXURIOUS bathrooms and with ESTUARY VIEWS to the rear.

The property is located a short walk from Gayton Primary school, Heswall Golf club and the centre of Heswall.

With a large SOUTHERLY FACING rear garden with large patio and lawned garden.

In brief the accommodation affords: entrance hall, living room, study, lounge, W.C, large OPEN-PLAN kitchen dining and family room, utility. Upstairs there are four generous DOUBLE BEDROOMS - including one en-suite, and the main family bathroom.



**Front Entrance**

Into:

**Hall**

Karndean flooring, staircase to first floor with glass balustrade

**Lounge**

20'0" x 14'6" (6.12 x 4.42)

Double glazed sliding doors overlooking the SOUTH FACING rear garden, radiator, power points

**Living Room**

11'3" x 17'5" (3.45 x 5.33)

Double glazed windows, radiator, power points, TV point, cupboards, door into;

\*\*This room has been designed with the option to use it as a bedroom, as the study has (concealed) plumbing and it could be easily adapted into an en-suite\*\*

**Study**

7'10" x 5'8" (2.40 x 1.73)

Double glazed window, radiator, power points

\*\*This room has been designed with the option to use it as a bedroom, as the study has (concealed) plumbing and it could be easily adapted into an en-suite\*\*

**W.C**

W.C, wash hand basin

**Open Plan Kitchen Living Room**

25'5" x 23'2" (7.77 x 7.08)

WOW-FACTOR open-plan kitchen dining and living room with stylish fitted kitchen with central island with quartz worktops, inset sink, integrated Siemens induction hob, integrated Siemens ovens, integrated Siemens washing machine, Quooker tap, space for fridge freezer, radiators, TV point, double glazed windows, large double glazed picture window, bi-folding doors out to the SOUTHERLY FACING rear garden and deck, Karndean flooring

**Utility Room**

9'1" x 12'11" (2.77 x 3.95)

Wall and base units, quartz worktops, inset stainless steel sink, door into the Garage, space and plumbing for the washing machine and dryer

**UPSTAIRS**

**Bedroom One**

11'4" x 16'1" (3.47 x 4.91)

Double glazed window, radiator, power points, fitted wardrobes, door to;

**En-Suite**

Luxurious en-suite shower-room with shower, low level W.C, wash hand basin, tiled walls and floor, towel rail, LED mirror, double glazed window

**Bedroom Two**

12'1" x 16'1" (3.69 x 4.91)

Double glazed window, radiator, power points, wardrobes, door to;

**En-Suite**

Luxurious en-suite shower-room with shower, low level W.C, wash hand basin, tiled walls and floor, towel rail, LED mirror, double glazed window

**Bedroom Three**

12'0" x 9'9" (3.66 x 2.99)

Double glazed window, radiator, power points

**Bedroom Four**

9'9" x 12'0" (2.99 x 3.67)

Double glazed window, radiator, power points,

**Bathroom**

WOW FACTOR luxury bathroom with free-standing bathtub, shower, low level w.c, wash hand vanity basin, double glazed window, tiled walls and floor, towel rail, LED mirror

**EXTERNALLY**

Externally the property sits in a large SOUTHERLY FACING plot with driveway, double garage with electric doors, and a great sized SOUTHERLY FACING rear garden with a large raised decked entertaining area with glass balustrade and a large lawn

**Council Tax Band**

Band F

