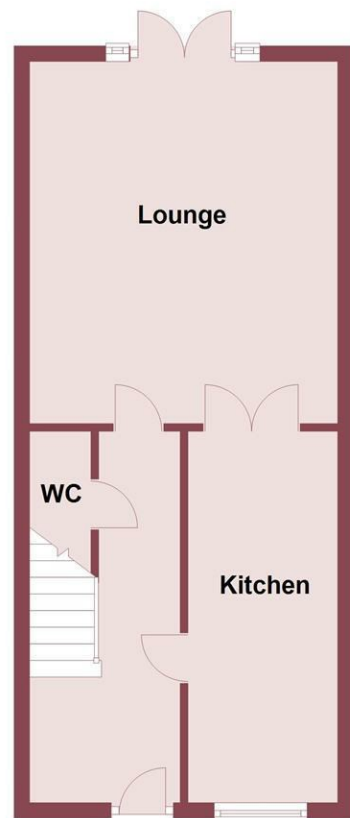
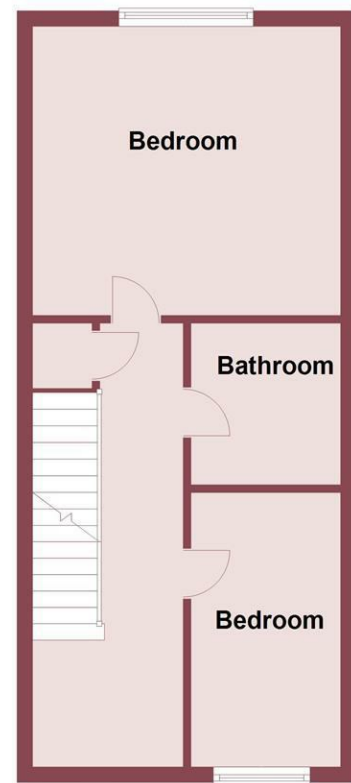




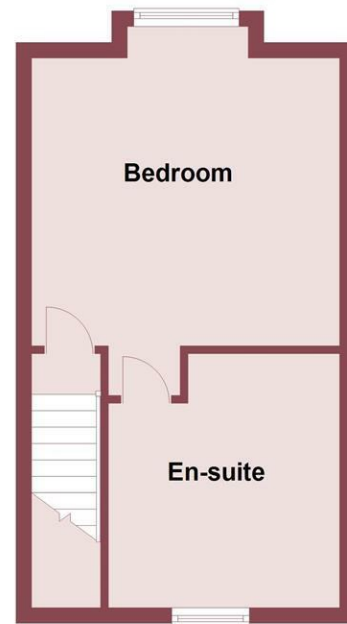
Ground Floor



First Floor



Second Floor



Whilst every attempt has been made to ensure the accuracy of this floor plan, measurements of doors, windows, rooms and any other items are approximate and no responsibility is taken for any error, omission or mis-statement. The plan is for illustrative purposes only and should be used as such by any prospective purchaser. The services, systems and appliances shown here have not been tested and no guarantee to their operability or efficiency can be given.
Plan produced using PlanUp.

Morecroft Road, Birkenhead, Wirral CH42 1NX

£140,000

3 Bedroom 1 Reception 2 Bathroom C

Three Bedroom Townhouse - En Suite - Great Investment Or First Time Buy - No Chain

Hewitt Adams is pleased to offer to the market this THREE BEDROOM TOWNHOUSE being sold with NO CHAIN on Morecroft Road in Rock Ferry.

Perfect for INVESTORS this property achieves circa £700pcm on the rental market.

In brief the property affords: front entrance, hall, lounge, kitchen and WC. To the first floor there are two bedrooms and a bathroom. The second floor consists of a bedroom and en suite shower room.

Boasting off road parking and a south facing rear garden. With gas central heating and double glazed windows.

Call Hewitt Adams to view this NO CHAIN property today.

Front Entrance

Into:

Front - Driveway parking for one car.
Rear - South facing garden laid to lawn and patio.

Hall

Stairs to first floor, radiator, door to WC

WC

2'7" x 6'0" (0.79 x 1.85)

WC, wash hand basin, radiator

Kitchen

6'3" x 15'8" (1.93 x 4.78)

Wall and base units, inset sink, integral oven with counter top gas burners, space for white goods, radiator, double glazed window

Lounge

13'0" x 15'3" (3.97 x 4.66)

Double glazed window and patio doors to rear, radiator, power point

First Floor

Bedroom Two

13'0" x 12'2" (3.97 x 3.72)

Double glazed window, radiator, power point

Bedroom Three

6'3" x 11'7" (1.93 x 3.55)

Double glazed window, radiator, power point

Bathroom

5'6" x 6'9" (1.68 x 2.08)

Bath with hand held shower, wash hand basin, WC, radiator, tiled floor

Second Floor

Bedroom One

13'1" x 13'5" (3.99 x 4.11)

Double glazed window, radiator, power point, door to

En Suite

9'9" x 10'8" (2.98 x 3.27)

Walk in shower, WC, wash hand basin, radiator, tiled floor

Externally

