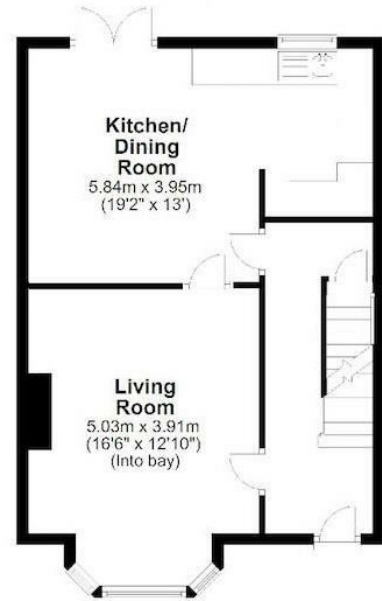




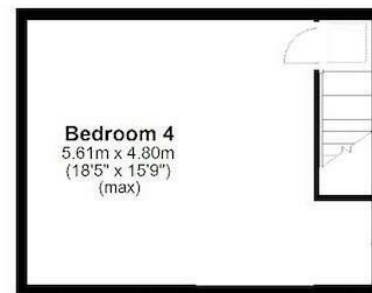
Ground Floor
Approx. 49.8 sq. metres (535.6 sq. feet)



First Floor
Approx. 49.8 sq. metres (535.6 sq. feet)



Second Floor
Approx. 27.1 sq. metres (291.6 sq. feet)



Allerton Road, Birkenhead, Merseyside CH42 5LW

£130,000

🛏️ 4 Bedroom 🛋️ 2 Reception 🚿 1 Bathroom 📊 D

****FOUR Bedroomed Mid Terrace - Excellent Condition - Ideal For Investment - Sold With a Tenant In Place****

Hewitt Adams is delighted to offer to the market this FOUR BEDROOMED mid-terraced property on Allerton Road in Birkenhead, a short distance from nearby shops and amenities.

The property benefits from a LOFT-EXTENSION and consequently offers FOUR BEDROOMS.

In brief the accommodation affords; entrance hall, lounge and dining room which opens into the kitchen. Upstairs on the first floor there is three bedrooms, and the main bathroom, and there is a large fourth bedroom on the second floor. With a private rear garden/yard.

With full double glazing and central heating.

The property is currently rented out on a 6 month AST, and the tenant has indicated they would be happy to remain in the property. Making this a fantastic TURN-KEY INVESTMENT.

Call Hewitt Adams on 0151 342 8200 to view.

Front Entrance

Into;

Hall

Staircase

Lounge

16'3" x 12'1" (4.96 x 3.7)

Double glazed window, radiator, power points, TV point

Kitchen Dining Room

13'0" x 19'1" (3.98 x 5.82)

Fitted kitchen with wall and base units, worktop surfaces, inset sink, integrated oven and hob, rear door to yard

FIRST FLOOR

Bedroom One

11'8" x 16'4" (3.57 x 5.00)

Double glazed window, radiator, power points

Bedroom Two

12'9" x 10'8" (3.91 x 3.26)

Double glazed window, radiator, power points

Bedroom Three

9'0" x 6'3" (2.75 x 1.91)

Double glazed window, radiator, power points

Bathroom

5'9" x 6'4" (1.77 x 1.94)

Comprising bath with shower above, low level w.c, wash hand basin

SECOND FLOOR

Bedroom Four

13'1" x 16'1" (4.00 x 4.91)

Double glazed window, radiator, power points

EXTERNALLY

Private rear patio yard.

