



Kittiwake Court

Stowmarket, Suffolk, IP14 5GS, IP14 5GS

Guide Price £150,000

This delightful first-floor apartment features a modern design and comprises two well-sized bedrooms. The open plan living, dining, and kitchen area form the heart of the home, allowing ample space for relaxation or entertaining.



Property Features

- Modern apartment in a popular location
 - First floor, 2-bedroom apartment
 - Contemporary features throughout
 - Close to the train station, town centre, and A14 access
 - Well-maintained communal grounds with green spaces
 - CHAIN FREE!
-

FULL DESCRIPTION

Situated in Kittiwake Court, Stowmarket, this property benefits from a prime location that provides easy access to local amenities. Residents can enjoy the convenience of nearby amenities, and recreational facilities, making it an ideal choice for families and commuters alike. The proximity to the train station and the A14 enhances connectivity to surrounding areas, ensuring a lifestyle of convenience.

Upon entering the apartment, you are greeted by a welcoming entrance hallway that leads to the various spaces within. Featuring a well-appointed bathroom with bath and shower over, wc and hand basin, there is a cozy bedroom which is perfect for guests or a home office. Opposite is the master bedroom designed with Juliette balcony. Furthermore there is the open plan living, dining, and kitchen area which truly stands out, with a modern kitchen featuring

integrated appliances and complete with a Juliette balcony.

The exterior of the property boasts well-maintained communal grounds, residents benefit from allocated parking, ensuring that convenience is part of daily life.

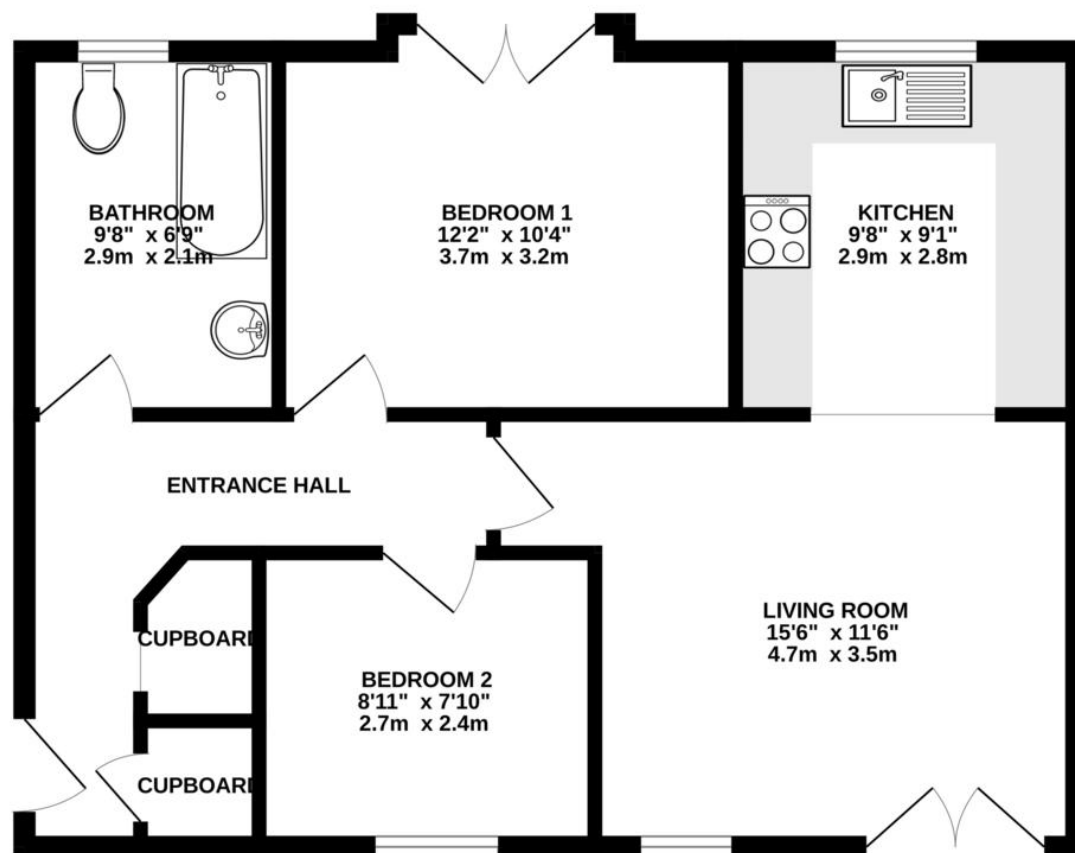
Tenure: Leasehold

Leasehold: Lease length - 125 years from 1st April 2008 /

Ground rent = £212.42 / Maintenance = £929.04

Council Tax Band: B - Mid Suffolk





Jackson & Co Bury St
Edmunds

www.jacksonandcocooversuffolk.co.uk
contact@jackson-ps.co.uk
01284 598 030

Agents Note: Whilst every care has been taken to prepare these particulars, they are for guidance purposes only. All measurements are approximate are for general guidance purposes only and whilst every care has been taken to ensure their accuracy, they should not be relied upon and potential buyers/tenants are advised to recheck the measurements