



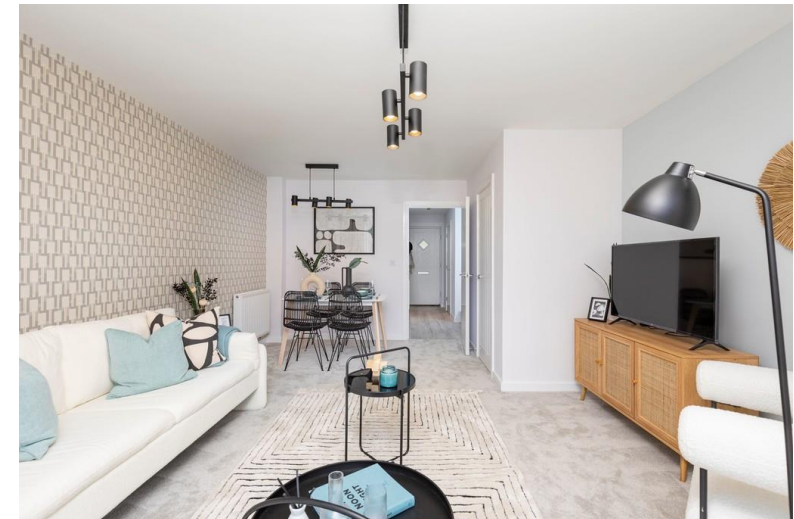
Jackson & Co



## Marham Park, Bury St Edmunds

From £349,995

Jackson & Co Bury St Edmunds welcomes you to The Evelyn, step into luxury with these stunning, semi-detached brand-new build properties in the highly desirable area of Marham Park, Bury St Edmunds. Designed to provide every comfort, these delightful family homes are set over three floors and have three bedrooms. Including an open-plan living and dining room, a separate kitchen & WC downstairs, two double bedrooms and a bathroom on the first floor and a master suite on the second floor including dressing room, storage space and ensuite



# Property Features

- Brand new build properties in a sought-after location
- Easy access to the A14, ensuring convenient commuting
- Three spacious double bedrooms
- Impeccably finished and presented to a high standard throughout
- Highly regarded and award winning developer
- Hassle-free move with no chain involved

## FULL DESCRIPTION

Attention to detail is evident throughout, with the entire property finished and presented to an impeccable standard that will leave you truly impressed. The location of the development is unbeatable, with easy access to the A14, ensuring convenient commuting to nearby towns and cities.

The exterior of this property is just as impressive, with an enclosed garden providing a serene outdoor space for relaxation and leisure activities. Additionally, there is parking for two cars.

Don't miss out on the opportunity to own one of these beautiful, brand new build properties. With three spacious double bedrooms, luxurious bathroom suites, and high-quality finishes, these homes exude elegance and sophistication. Located in the sought-after area of Marham Park, Bury St Edmunds, and with easy access to the A14, this property offers both a peaceful retreat and convenient commuting options. Secure your dream home today and enjoy a lifestyle of comfort and luxury.

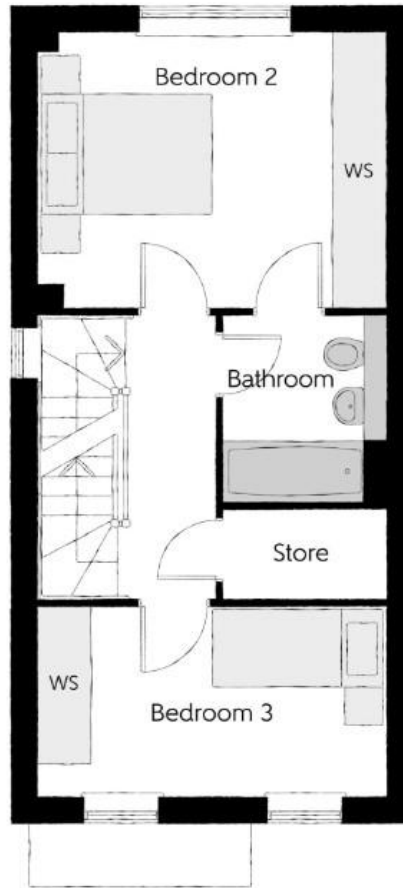
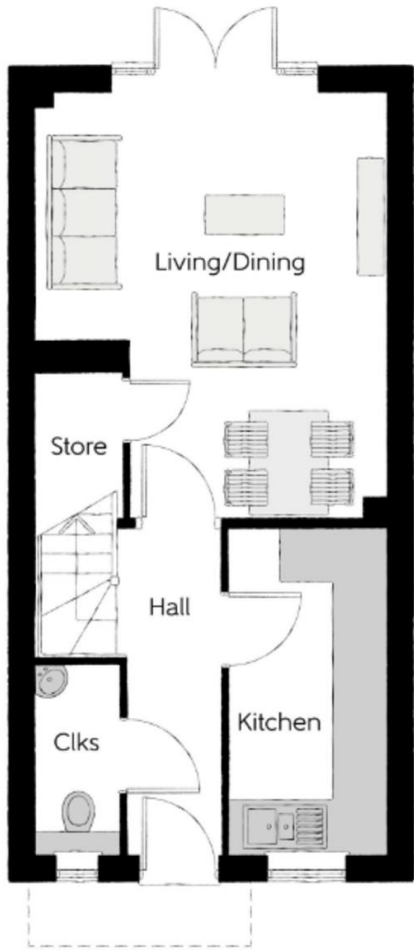
## MEASUREMENTS:

Kitchen - 3.720m x 1.799m 12'3" x 5'11"  
Living/Dining - 4.915m x 3.992m 16'2" x 13'1"  
(max) (max) (max) (max)  
Cloakroom - 2.164m x 0.937m 7'1" x 3'1"  
Bedroom 2 - 3.993m x 3.162m 13'1" x 10'5"  
Bedroom 3 - 3.992m x 2.164m 13'1" x 7'1"  
Bathroom - 2.150m x 1.875m 7'1" x 6'2"  
Bedroom 1 - 4.366m x 2.936m 14'4" x 9'8"  
Dressing - 2.720m x 1.898m 8'11" x 6'3"  
Bedroom 1 En Suite - 2.006m x 1.732m 6'7" x 5'8"









Jackson & Co  
Bury St Edmunds

[www.jacksonandcocoveringsuffolk.co.uk](http://www.jacksonandcocoveringsuffolk.co.uk)  
c [contact@jackson-ps.co.uk](mailto:contact@jackson-ps.co.uk)  
01284 598 030

Agents Note: Whilst every care has been taken to prepare these particulars, they are for guidance purposes only. All measurements are approximate are for general guidance purposes only and whilst every care has been taken to ensure their accuracy, they should not be relied upon and potential buyers/tenants are advised to recheck the measurements