



fowlers
properties

10 Meldon Road
Chagford, Devon TQ13 8BG

£750,000 Freehold



The Property

A great family home with superb views across the Dartmoor countryside to the moor. The property offers excellent accommodation with an entrance porch, hallway, a living room with granite fireplace and wood burner, a dining room, a kitchen/breakfast room and a recently added extension to include a shower room and a large utility room on the ground floor. Upstairs there is a landing, four bedrooms, a home office, shower room, w.c. and bathroom. The house was re-roofed just a few years ago, partly re rendered and damp proofed and it is fully double glazed and centrally heated by mains gas, It has an elevated front garden and a large rear terrace and garden with a lovely view and a big timber framed and metal clad storage barn. This house must be viewed to be properly appreciated.

Situation

10 Meldon Road sits slightly elevated above the lane and enjoys great views across the Dartmoor countryside to the high moor and Meldon Hill. It is a level walk along Meldon Road and New Street to the bustling town square which has a wide variety of day to day and specialist shops, pubs and cafes. Chagford has a primary school, pre school and Montessori, a Parish church, Roman Catholic church and Gospel chapel, surgeries for doctor, dentist and vet, a library and children's play park and skate park. There are good sports facilities including a cricket and football pitch with pavilion, a bowling club, tennis club and an open air swimming pool in the summertime. The A30 dual carriageway is about 5 miles away and Exeter is approximately 20 miles.

Council tax band

Band E

Services

Mains gas, water, electricity and drainage.

Directions

What3Words [///circulate.bulky.repeated](https://www.what3words.com/circulate.bulky.repeated)

From Fowlers front doors turn left and left again into High Street passing the Three Crowns and The Globe. At the junction turn right into New Street and walk along the street until the terraced houses on the right hand side end and No.10 is just another twenty five paces set back off the road with a cast iron front gate to the flight of steps to the front porch.

- A well proportioned granite built semi detached home
- Slightly elevated above the road with great views
- Superb views to Dartmoor
- Recently extended and re-roofed
- Four bedrooms plus home office
- Dining room
- Living room with fireplace and wood burner
- Kitchen/breakfast room
- Utility room and shower room extension
- Terrace and garden with super views and large store/barn

Front porch

The porch is of a multi paned design with slim doors to the front garden to either side and granite threshold with a panelled and part glazed front door to the hall. A pendant light is fitted.

Entrance hall

The hall has an engineered oak floor, stairs to the first floor with space beneath for storage, stripped pine panelled doors to the lounge and living room, a pendant light point, a double panel radiator and circuit breakers and electric meter are mounted high on the wall by the front door.

Lounge

This front facing room has a double glazed replacement sash window looking out across countryside to the view of the moor. There are picture rails, a pendant light point, a double panel radiator, a twin lighting rheostat and an exposed granite wall with a broad opening to the kitchen with an oak lintel above.

Living room

This is an L shaped room with a spacious sitting space and dining area and great character. It has a large replacement double glazed sash window to the front looking out to the view to the moor and a pair of upvc double doors to the paved yard at the rear. The fireplace has a large oak surround and mantel with fitted woodburner with lined flue on a raised plinth with a slate hearth, four fitted oak bookshelves, TV point and 15 power points. The dining area has a built in store cupboard with oak doors and shelving in an old fireplace and a doorway which leads to the kitchen.





Kitchen/breakfast room

This is a charming kitchen with a slate flag floor and carpenter built base cabinets with thick reclaimed wooden work tops incorporating a Belfast sink with chromed mixer taps and a matching plate rack and spice shelf above. There are two slate sills beneath the upvc double glazed windows which look out to the rear yard. Splashbacks are tiled and there is a chimney breast with a recessed range cooker set into it with tiled splashbacks and an extractor hood and lights above. To one side of the chimney breast are shelves and to the other there is space for an upright fridge/freezer. There is ample room for a breakfast table for four. A door leads to the back stairs which rise from the kitchen and built in beneath the stairs are storage cupboards. There are two pendant light points and two LED downlighters by the cooker. A doorway leads out to the rear lobby.

Rear lobby

This is the entrance to the recent extension and it has a slate floor with underfloor heating, part painted plaster and part timber clad walls, a upvc double glazed wood effect door to the rear yard, space for boots and coats and doorways to the shower room and the large utility room.

Shower room one

This room has a slate flag floor with underfloor heating, a fitted shower cubicle with tiled walls and a glazed curved shower screen doors, a wash hand basin with tiled splashbacks and a vanity cupboard beneath, a low level w.c., two LED downlighters and an extractor fan.

Utility room

A spacious room with a slate flag floor with underfloor heating, eight LED downlighters, an extractor fan and built in base and wall units with a grey slate effect work surface and a double bowl single drainer stainless steel sink with mixer tap. There is plumbing for an automatic washing machine and space for a dryer and there are plenty of cupboards. There is a wall mounted thermostat for the underfloor heating and a pair of upvc double glazed wood effect doors to the rear yard.



First floor landing

The white painted staircase leads to the first floor and has turned and painted balusters and a matching balustrade. Stripped pine panelled doors lead to each room and a double glazed replacement sash window looks out to the front over the Dartmoor countryside to the moor.

W.C.

This has a wood effect laminate floor, a low level w.c., a wash hand basin with tiled splashback, a single panel radiator and a upvc double glazed obscure window.

Bedroom 1

A front facing double room with a large upvc double glazed sash window looking across the Dartmoor countryside to Meldon Hill and the moor. There is a central ceiling light point, a dado rail, an original cast iron fireplace and mantel, a double panel radiator and space for two free standing wardrobes.

Bedroom 2

A front facing double bedroom with a great view to the moor across the Dartmoor countryside. There are four fitted pine shelves, a pendant light point and a double panel radiator.

Bedroom 3

This is a rear facing double bedroom with a upvc double glazed sash window looking out to the rear to the garden terrace, a cast iron fireplace with wooden surround and mantel, pendant light point and a double panel radiator.





Shower room two

This room has a skylight set into a shaft for natural light, a fully tiled shower with glazed shower screen door, built in thermostatic shower, extractor fan and built in shelved linen cupboards with louvred doors.

Bathroom

This bathroom is accessible either from both the main landing or the back landing. It can be locked on either side so if there were a guest in the back Bedroom 4, they would be able to have a bathroom of their own. It is fitted with a white cast iron bath with wood panelled side, tiled splashbacks and a shower/mixer tap, pedestal wash hand basin, low level w.c., slate effect laminate floor, ceiling light point, chromed heated towel rail/radiator and a upvc double glazed obscure window.

Bedroom 4

This double room is accessed from the back landing and has a upvc double glazed sash window, a double panel radiator and a latched lockable door to the office.

Office/Bedroom 5

The office has level access directly to the garden terrace. It is a comfortable and well insulated space with plenty of power points and a large upvc double glazed window plus a high eaves gable window for additional natural light and matching upvc double doors to the terrace. It has an oak floor and two LED downlighters.



Exterior

Front garden

The front garden sits on top of a granite wall which is topped by a mixed hedgerow with the granite entrance steps in the centre and a level area to either side for sitting out and enjoying the views over the Dartmoor countryside. A pathway leads up the side of the house to the rear courtyard and the back garden.

Rear courtyard

Between the house and the utility room is a paved courtyard which has an exterior light, an exterior tap and a bespoke steel spiral staircase to the terrace and garden above. The paved courtyard extends to a side gate access to the front of the property and to the wood store located to the side of the house.

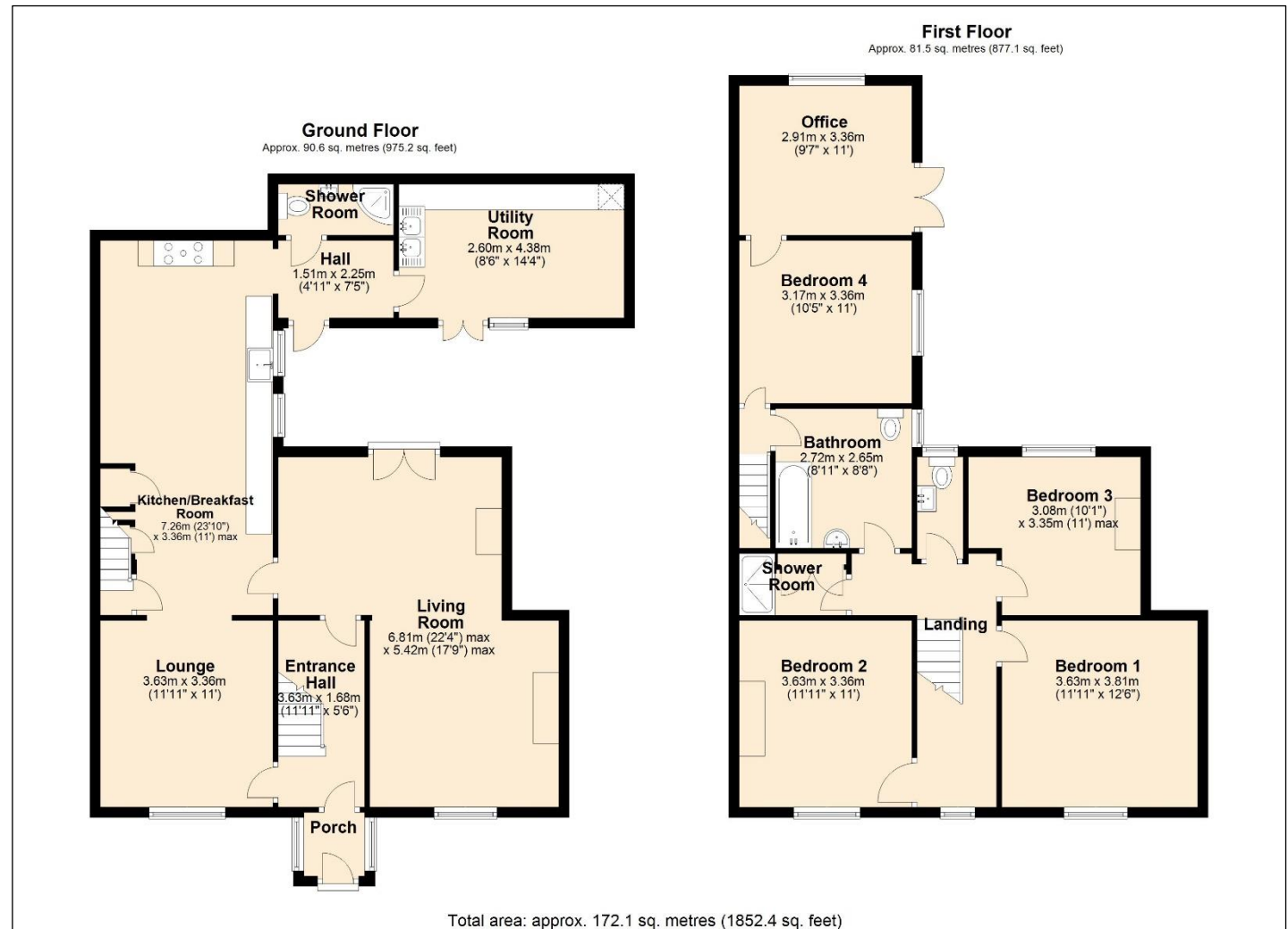
The garden

At the top of the spiral staircase is a large paved terrace which is built partially on top of the ground floor extension. The terrace is 24' x 21' (7.31m x 6.4m) and it has a matching bespoke metal balustrade and a view across to the countryside and the high moor at Kestor. To one side is a quarter circle of lawn and there are raised planters and a low granite retaining wall and steps to a slightly higher level lawned area with a wildlife pond. A rose arbour leads through to the compost area and barn.

Barn

This two storey structure is timber framed and clad with a corrugated metal exterior. There is an internal staircase to the first floor and there is power and light. To the south side of the barn is a compost area and a gated access to a rear path which leads to an adjacent alleyway access to Meldon Road at the front of the house.





VIEWING BY APPOINTMENT ONLY

The particulars are produced in good faith and are set out as a general guide only. The agents cannot accept liability for any inaccuracy or misdescription, and these particulars do not constitute any part of a contract and the purchasers should satisfy themselves as to each and every particular. No person in the employment of Fowlers Properties Ltd has the authority to make or give any representation or warranty whatsoever in relation to any property.