

# Millbank Tower & 30 Millbank

Fitted Office Space on  
the River Thames from  
635 sq ft - 14,805 sq ft

## An iconic building on the banks of the River Thames

Designed by Ronald Ward & Partners, Millbank Tower has been an enduring landmark on the London skyline since its construction in 1963.

Millbank Tower and adjacent building 30 Millbank enjoy a coveted location on the River Thames, the gateway to Westminster and home to iconic institutions such as Burberry's brand headquarters, Tate Britain art gallery and Chelsea College of Arts.

Throughout its history, Millbank has been home to many high-profile political and other organisations including the United Nations, Central Statistical Office, the Environment Agency as well as being used as a general election campaign centre for both the Conservatives and Labour Party.

Now, with affordable, flexible leases, this iconic building and address is ready and available to welcome a new host of movers and shakers.



# Affordable. Flexible. Fitted.

635sqft -  
14,805sqft

# Location

## Perfectly placed to enjoy everything that London has to of

Located on the North side of the Thames, approximately equidistant from Pimlico (Victoria line) and Westminster (Circle, District and Jubilee lines) Underground Stations, both a short walk away from the property. The property is also within walking distance of Vauxhall and Victoria mainline stations. Closer still is Millbank Pier, with Thames Clipper services connecting you to Canary Wharf, Greenwich and beyond.

Occupiers are well serviced by a wide range of amenity positioned along Horseferry Road, including Pret a Manger and Ravello, a two minute walk from the property. Bars and restaurants aren't far away either, including The Cinnamon Club in Great Smith Street, a gourmet Indian restaurant in a former public library, is a favourite with the Westminster elite.





- 
**Millbank Pier**  
3 mins walk
- 
**Pimlico**  
12 mins walk
- 
**Westminster**  
14 mins walk
- 
**Vauxhall**  
13 mins walk
- 
**St James's Park**  
16 mins walk
- 
**London Victoria**  
25 mins walk

Times taken from Google Maps and are approximate only

### Restaurants

- Footstool Restaurant
- Quirinale
- The Roux
- Quilon
- The Cinnamon Club
- The Vincent Rooms
- Rex Whistler
- The Blue Boar
- Osteria
- Millbank Spice
- City Café
- The English Pig
- Pizza Express
- Mathura
- Regency Café

### Bars

- Millbank Lounge
- Marquis of Granby
- White Horse & Bower
- The Barley Mow
- Morpeth Arms
- The White Swan
- St Stephen's Tavern
- The Speaker
- The Royal Oak

### Health, Wellbeing & Culture

- St John's Gardens
- Millbank Gardens
- Victoria Tower Gardens
- Tate Britain
- Bannatyne's Health Club
- Dolphin Fitness Club

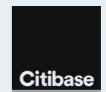
### Cafés

- Relish Sandwich Shop
- Ravello Espresso
- Pret a Manger
- Starbucks
- Café Rocks
- Etsu Café
- Crussh
- Capsicum Deli
- Joe's Espresso Café
- Caffè Nero
- Tate Britain Café
- Regency Café
- Pret a Manger
- Chelsea College of Art Café
- The Cellarium

### Local occupiers



### BURBERRY

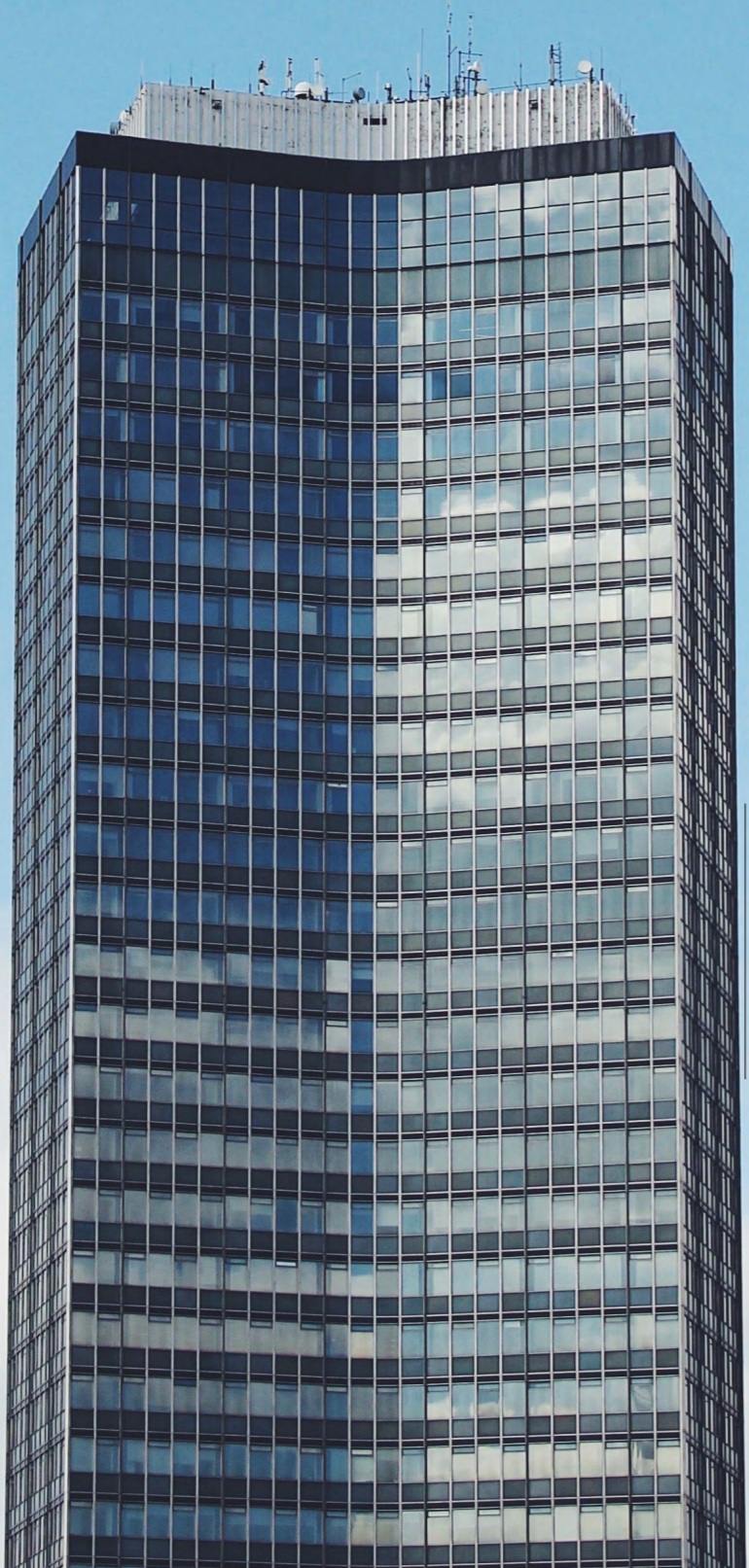


### EPR Architects



### TAYLOR-DEJONGH





# Specifications



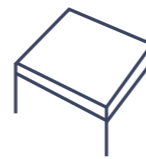
**24 hour concierge  
reception**



**Air conditioning**



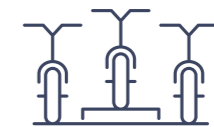
**Showers**



**Full access  
raised floors**



**WC's**



**Bike storage**



**Metal tile suspended  
ceiling with recessed  
lights**



**Excellent natural  
light throughout**



**Panoramic views  
of London**

# Millbank Tower

31 floors with unrivalled views over the River Thames and across central London

31		
30		
29		
28		
27		
26		
25		
24		
23		
22		
21		
20		
19		
18		3,429 sq ft
17		
16		7,257 sq ft*
15		
14		
13		
12	4,722 sq ft (Available May)	
11		635 sq ft**
10		
09		
08		
07		
06		1,444 sq ft
05		
04		
03	1,359 sqft	
02		5,659 sqft
01		
GF		5,042 sqft
B		

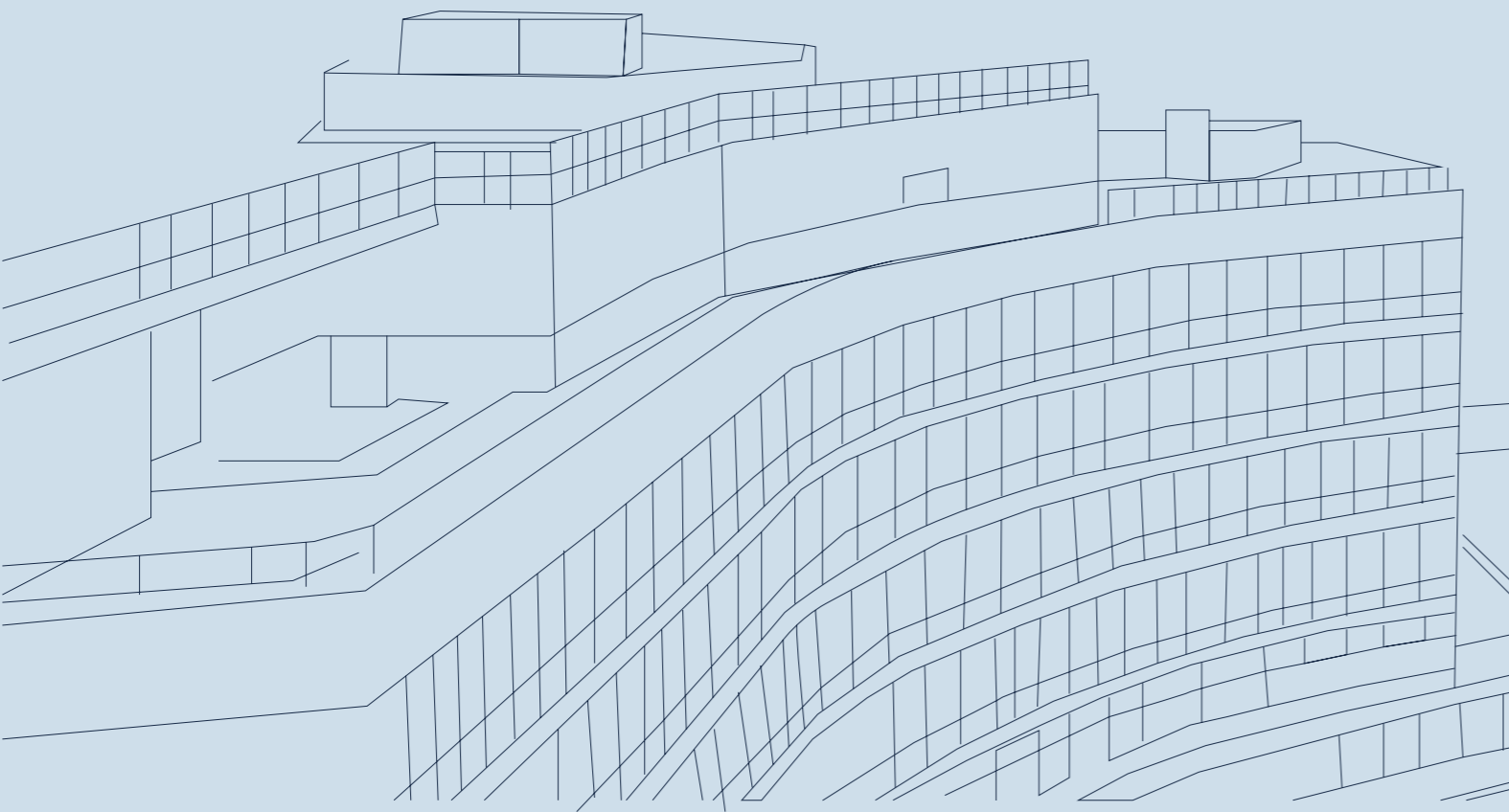
←  
Towards  
Vauxhall Bridge

→  
Towards  
Westminster 

\* Approx. 25% of the NIA is studio space and probably not suitable to convert to offices. \*\* No access to toilets on the same floor.

Nine floors and Basement  
next to the iconic tower

# 30 Millbank



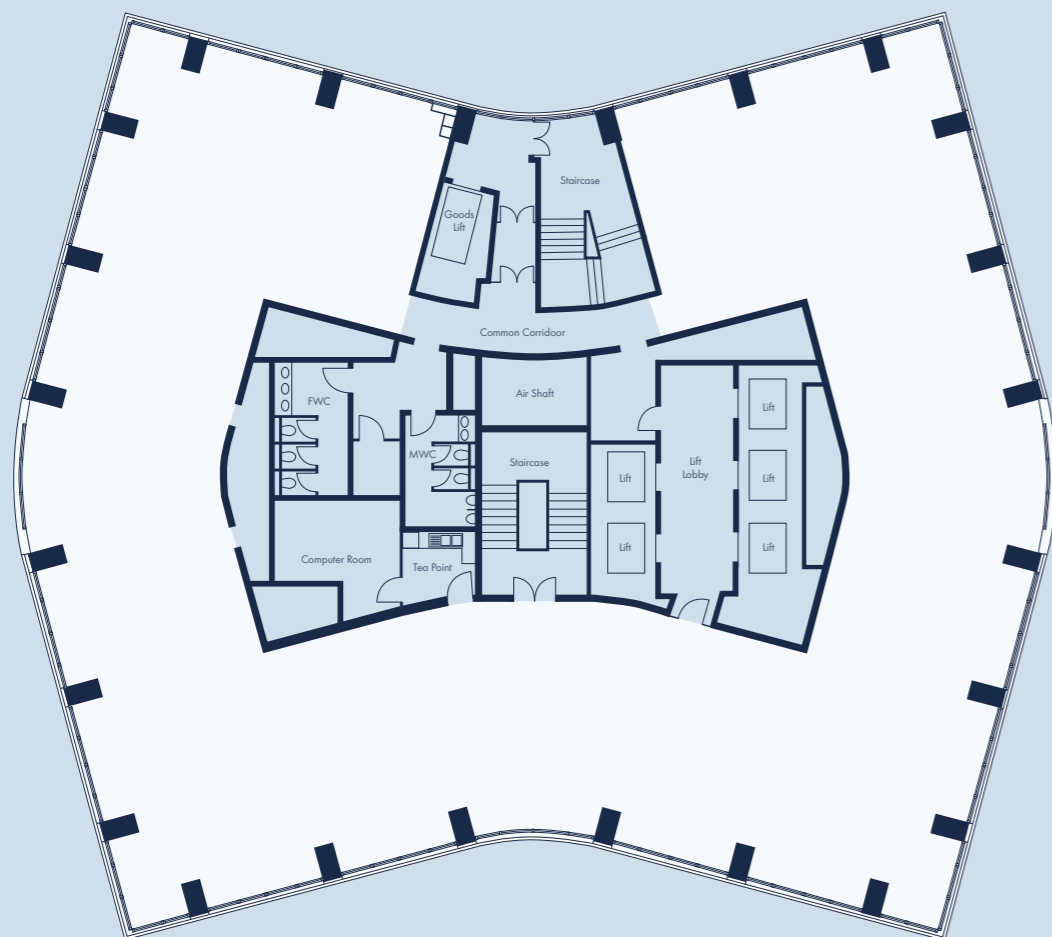
←  
Towards  
Vauxhall Bridge

08		426 sq ft*
07	11,130 sq ft	
06	3,249 sq ft	
05		
04		4,714 sq ft
03		
02		
01		
GF	RECEPTION	
B	3,674 sq ft Shower facilities and bicycle spaces also available	

→  
Towards  
Westminster 

\*Storage & Comms for the 7th floor.

# Detail



Indicative floorplate at Millbank Tower

A number of floors have been refurbished back to open plan with a specification that today's discerning companies and their staff expect. Others are available fitted out 'plug and play' for an occupier to move in quickly with limited fit out costs.

## Lease

Flexible leases with mutual rolling breaks from September 2024

## Rent

£35.00 per sq ft. inclusive of service charge

## Rates

Ranging from £16.50 - £20.00 per sq ft payable (interested parties advised to make their own inquiries with the VOA)

## Parking

Available by separate arrangement





**See it to believe it.  
Contact the Agents to  
book a viewing**



**Harry Cormack**  
+44 7815 463 822  
harry.cormack@levyrealestate.co.uk

**Samantha Jones**  
+44 7800 539 387  
Samantha.Jones@levyrealestate.co.uk



**Michael Oliver**  
+44 7591 200793  
Michael.Oliver@eu.jll.com

**Georgina Ford**  
+44 7873 627738  
Georgina.ford@eu.jll.com



**Guy Bowring**  
+44 7831 185728  
gbowring@tuckerman.co.uk

**Scott Fisher**  
+44 7890 572225  
sfisher@tuckerman.co.uk