



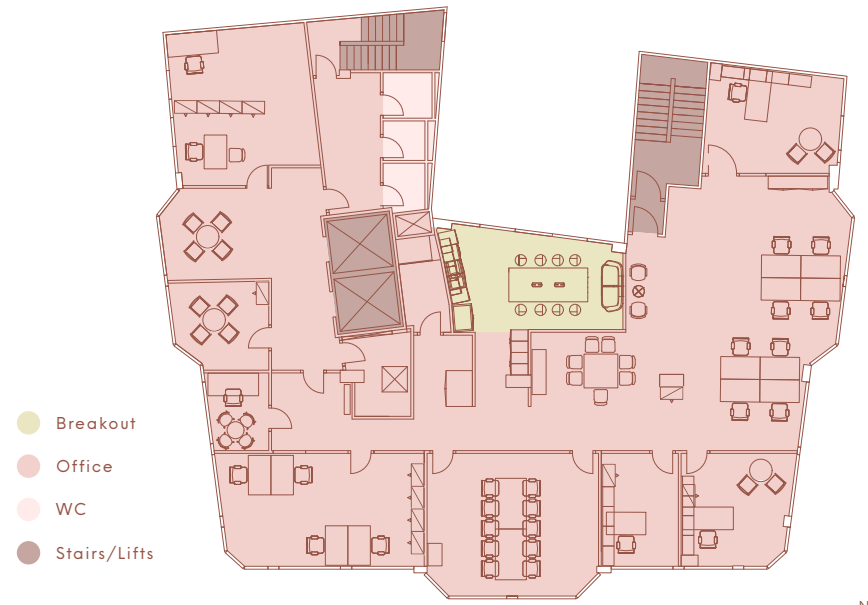
ATLAS HOUSE

LONDON, SW1

READY TO GO

FULLY FITTED OFFICE TO LET IN VICTORIA

The office floor measures to be 3,450 sq ft and is fitted and furnished to provide 2 large meeting rooms, 5 private offices, 10 open plan desks and a kitchen/breakout space. The building benefits from a manned reception, 2 passenger lifts, bike storage and showers.



Not to scale. Indicative only.

GN



EXCEPTIONAL
STAFF AMENITY

24 HOUR
ACCESS

AIR
CONDITIONING

BIKE
STORAGE

SHOWER
FACILITIES

TWO
PASSENGER LIFTS

DDA
COMPLIANT

EXCELLENT
TRANSPORT LINKS

THE LOCATION



LOCATION

The building has fantastic connectivity being 2 minutes from Victoria Station and Victoria Underground (Victoria, Circle and District lines). In addition, there is an abundance of tenant amenities on the property's doorstep with both Nova and Cardinal Place located a stones throw away.

LOCAL AMENITIES

- | Restaurants | Retail | Amenities | Hotels |
|---------------------|-------------------|-----------------------|---------------------|
| 1. Ottolenghi | 1. Les Sebteurs | 1. Anna Makarova Yoga | 1. The Berkeley |
| 2. Thomas Cubitt | 2. Rixo Bridal | 2. RE:Mind | 2. The Lanesborough |
| 3. Olivo | 3. Loquet London | 3. SMUK | 3. The Halkin |
| 4. Boisdale | 4. ME & EM | 4. Barry's Bootcamp | 4. The Hari |
| 5. Atis | 5. Philip Treacy | 5. Hotpod Yoga | 5. Z Hotels |
| 6. Wild by Tart | 6. Jo Loves | 6. LondonCryo | 6. The Goring |
| 7. Vagabond | 7. Cardinal Place | 7. H2 Gyms | 7. Hotel 41 |
| 8. Rail House Cafe | | 8. IRebel | |
| 9. Sticks 'n' Sushi | | 9. Frame | |
| 10. Ole & Steen | | | |
| 11. Notes Coffee | | | |
| 12. Ahi Poke | | | |
| 13. Bone Daddies | | | |
| 14. The Palm House | | | |
| 15. Greenwood | | | |



ATLAS HOUSE

LONDON, SW1

FURTHER INFORMATION

LEASE INFORMATION

Available by way of a new sublease for a term until September 2027.

EPC

EPC rating is available upon request.

CONTACT

FOR FURTHER INFORMATION GET IN CONTACT

GUY BOWRING

TUCKERMAN

+44(0)7831 185 728
gbowring@tuckerman.co.uk

SCOTT FISHER

TUCKERMAN

+44(0)7890 572 225
sfisher@tuckerman.co.uk

Tuckerman

Subject to contract. Tuckerman for themselves and the vendor of this property give notice that these particulars do not form, or form part of, any offer or contract. They are intended to give fair description of the property and whilst every effort has been made to ensure their accuracy this cannot be guaranteed. Any intending purchaser must therefore satisfy themselves by inspection or otherwise. Neither Tuckerman nor any of its employees, has any authority to make or give any further representations or warranty whatsoever in relation to this property. All prices and rents quoted are net of VAT. August 2023. Designed by studio185.london | 652

