



Stewkley Road | | Soulbury | LU7 0DH

Asking Price £550,000

# Plot 1

Stewkley Road |  
Soulbury | LU7 0DH  
Asking Price £550,000

Situated in the charming Buckinghamshire village of Soulbury, this brand-new four-bedroom semi-detached home is just one of two in a non estate location with a garage and driveway. Offering energy efficient modern comforts such as air source heat pump with under floor heating, as well as peaceful village life, while being striking distance of Leighton Buzzard and Milton Keynes. The property features a spacious lounge, an open-plan kitchen/dining area with French Doors to a great size tree lined garden. Excellent Bucks school catchments including the Aylesbury grammar schools. With excellent transport links to London and nearby amenities in Leighton Buzzard, this home provides a great balance of convenience and countryside appeal. Due for completion early Summer 2025.

- Brand-new four-bedroom semi-detached home in the sought-after Buckinghamshire village of Soulbury.
- Energy efficient with air source heat pump. Underfloor heating downstairs.
- Contemporary family bathroom, en-suite and convenient downstairs W.C.
- Private great size garden.
- Ten year new home warranty/guarantee.
- Master bedroom with en-suite plus three additional good-sized bedrooms.
- Integrated garage and block paved driveway parking.
- Located in the charming village of Soulbury, home to the popular Boot Inn pub and an active sports club.

## ABOUT

COMING SOON – EXECUTIVE NEW BUILD HOME NON ESTATE  
LOCATION IN SOULBURY - DUE FOR COMPLETION EARLY SUMMER  
2025.



## IF THIS WAS YOUR HOME..

A fantastic opportunity to purchase a brand-new four-bedroom semi-detached home in the charming Bucks village of Soulbury. Situated on the sought-after Stewkley Road, this stunning property is part of an exclusive development of just two houses, offering modern living with a stylish design, high-quality finishes and energy efficient with an air source heat pump.

The spacious ground floor features a welcoming hallway, leading into a generous lounge – the perfect space for relaxing with family. To the rear, an impressive open-plan kitchen and dining area boasts contemporary fittings, sleek worktops, and ample space for entertaining, with patio doors opening onto the rear garden. A utility room and downstairs W.C. provide additional convenience.

Upstairs, the home offers four well-proportioned bedrooms. The master bedroom benefits from a luxurious en-suite shower room, while the remaining three bedrooms share a stylish family bathroom. Built-in storage and modern finishes complete the first floor.

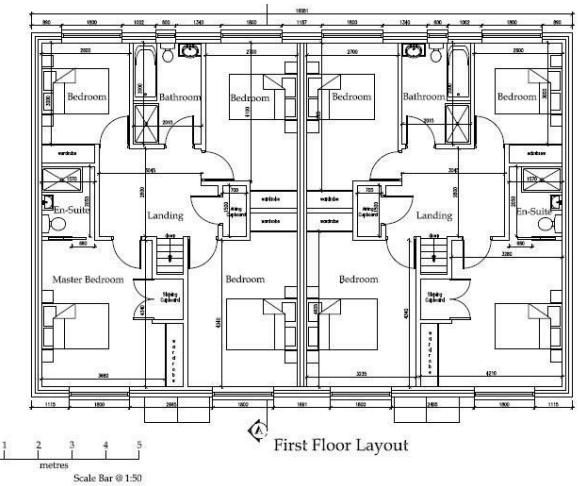
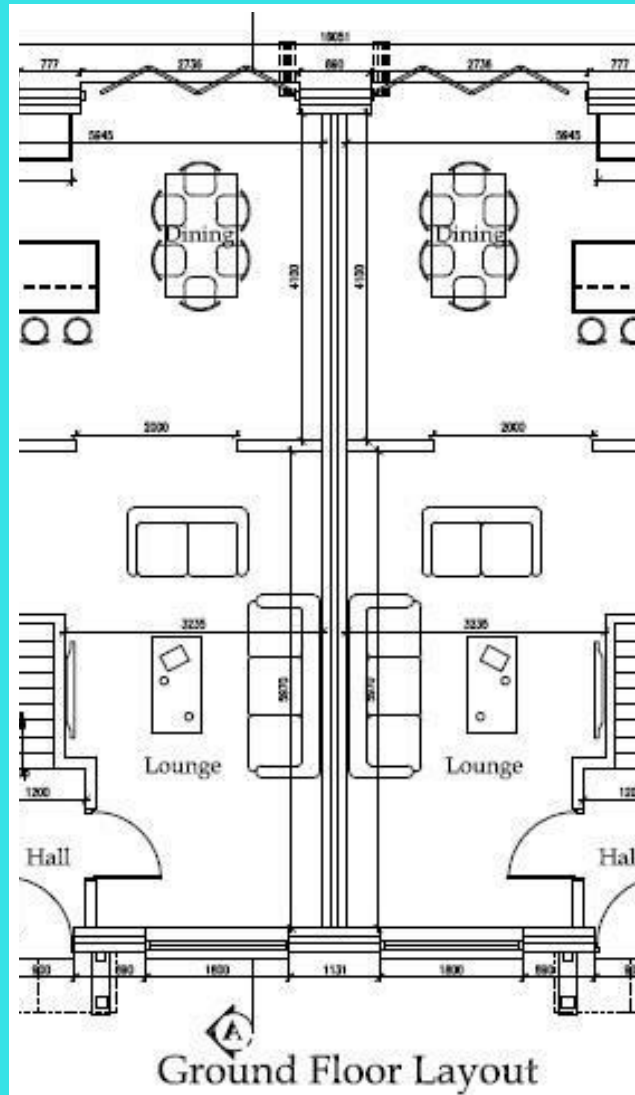
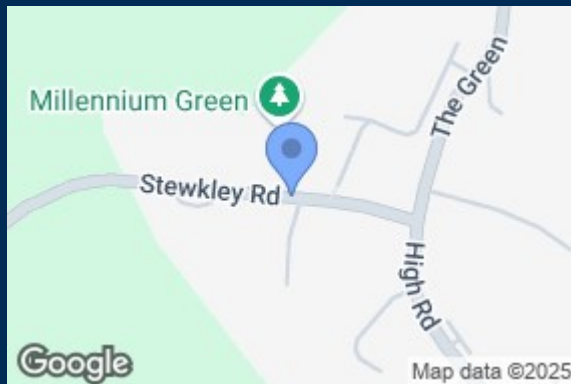
Externally, the property includes an integrated garage, a private rear garden which will be laid to lawn and have a patio area. To the front there will be a block paved driveway for parking.

Located in a picturesque setting, Soulbury offers a peaceful village lifestyle while being within easy reach of Leighton Buzzard, excellent schools, and transport links to London and beyond.

Don't miss out on this exceptional new home – contact Fine Homes Property today on 01525 261100 for more information.

## LOCATION

Soulbury is a picturesque and sought-after village in Buckinghamshire, offering a perfect blend of countryside charm and modern convenience. The village is home to the popular Boot Inn, a welcoming pub known for its great food and community atmosphere. Residents enjoy a strong village spirit, with local events and social spaces fostering a close-knit community. For sports enthusiasts, Soulbury has an active sports club, including cricket and football teams. While the village itself provides a peaceful rural setting, essential amenities are just a short drive away in Leighton Buzzard, which offers supermarkets, shops, cafes, and a train station with direct services to London Euston in 32 minutes. In the local area there are a selection of primary schools available Ofsted rated good. For secondary schools there are many options with Vandyke/Cedars in Leighton Buzzard, Cottesloe in Wing as well as the three Aylesbury Grammar schools. The area is well-connected by road, with easy access to the A4146, A5, and M1, making it ideal for commuters. Surrounded by beautiful countryside and excellent walking trails, Soulbury is a perfect location for those looking for a tranquil village lifestyle with great accessibility.



Duck End  
Great Brickhill  
Buckinghamshire  
MK17 9AP

01525 261100

enquiries@finehomesnronerty.co.uk