



115 Metchley Drive, Birmingham, B17 0LB

£1,100 PCM

Hadleigh Estate Agents are pleased to present this ground floor apartment within close proximity to Harborne High Street.

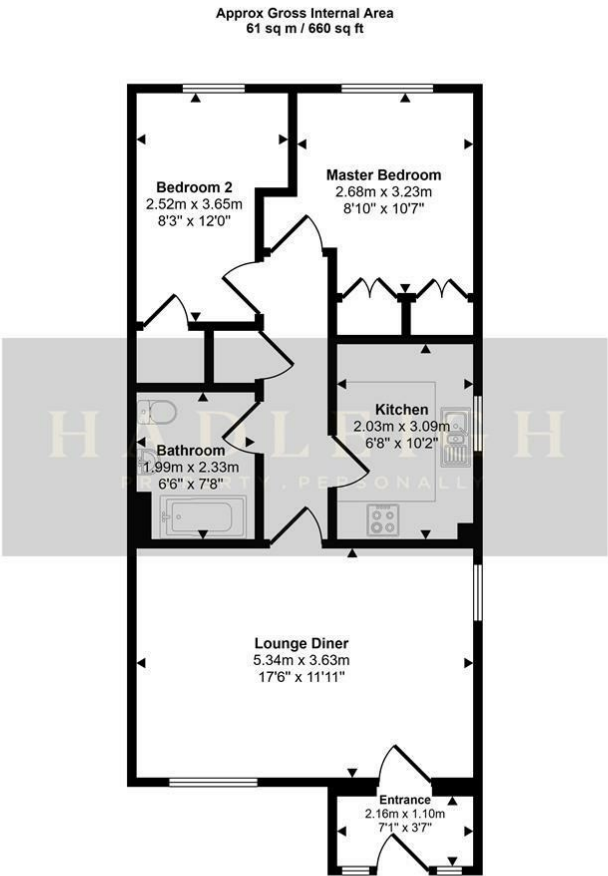
The property briefly comprises of, entrance porch, good sized living room with dedicated dining area. The windows in each room allow plenty of natural light into this lovely apartment, modern fitted kitchen with built in appliances, two double bedrooms both benefiting from built in wardrobes, fully fitted family bathroom with shower above the bath. The property is also a neutral décor throughout.

The apartment further benefits from a parking space, double glazing and electric heating throughout.

Call Hadleigh NOW to book your viewing.

The deposit payable is £1269.23

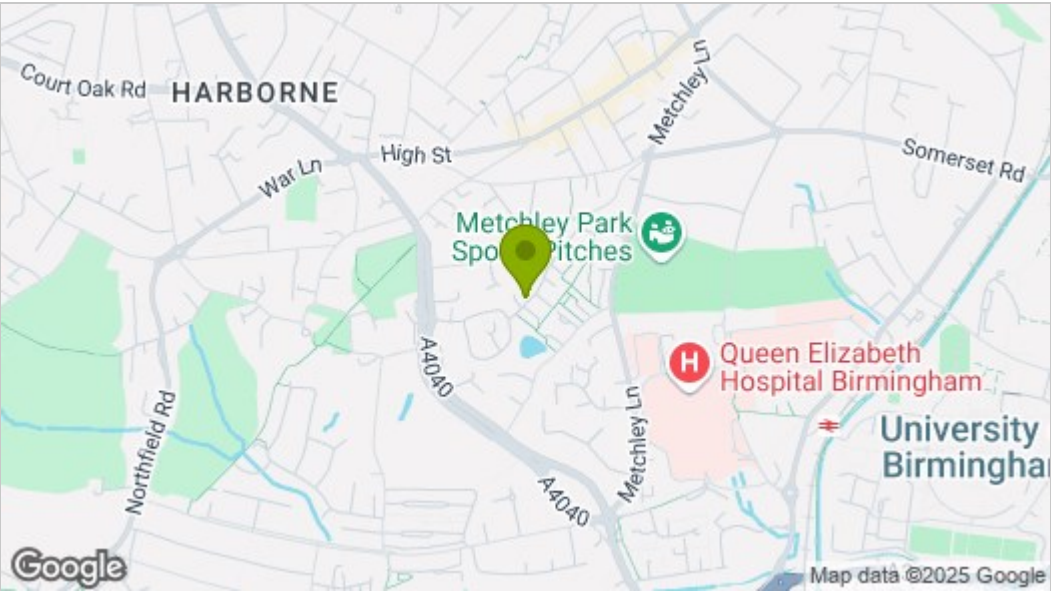
Floor Plan



Floorplan

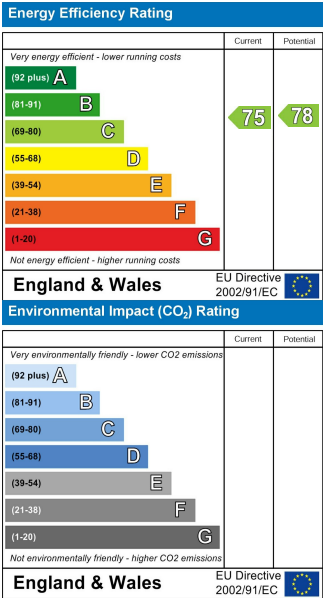
This floorplan is only for illustrative purposes and is not to scale. Measurements of rooms, doors, windows, and any items are approximate and no responsibility is taken for any error, omission or mis-statement. Icons of items such as bathroom suites are representations only and may not look like the real items. Made with Made Snappy 360.

Area Map



These particulars, whilst believed to be accurate are set out as a general outline only for guidance and do not constitute any part of an offer or contract. Intending purchasers should not rely on them as statements of representation of fact, but must satisfy themselves by inspection or otherwise as to their accuracy. No person in this firms employment has the authority to make or give any representation or warranty in respect of the property.

Energy Efficiency Graph



SALES • LETTINGS • SURVEYORS