



WATERSIDE

HOLIDAY HOME OWNERSHIP IN DORSET

Escape the ordinary

WATERSIDESALES.CO.UK



WATERSIDE

Welcome to Waterside

Owning a holiday home on the South Coast opens up a wealth of opportunity for you and your family to explore the beautiful landscapes, soak in the stunning views and simply make the most of what this part of the world has to offer.

Having a place to call your own makes it even easier to escape time and time again to your own paradise. Our Holiday Parks in Dorset are only minutes away from the seaside resort of Weymouth. Whether you choose to crab at Weymouth Harbour, sample the town's best fish and chips or explore the wonders that lie in Bowleaze Cove, there's something in Dorset for the whole family to enjoy.

There's no place like Waterside

Waterside Holiday Group have been quietly redefining holiday home luxury on the English Coast, with millions of pounds worth of investment over the past 6 years, it's no wonder our homes and facilities are award-winning.

From the small things like checking your holiday home while you are away, to the big things, like the facilities we have on offer, we want to make your home away from home perfect. It's these extra touches that mean so many holiday home owners choose Waterside.



Bowleaze Cove

HOLIDAY PARK & SPA

- Five-star facilities
- Coastal location
- Luxurious spa
- Indoor & outdoor pools
- Multiple bars and restaurants

HOLIDAY HOMES FROM
£59,995

Bowleaze Cove, Weymouth
Dorset DT3 6PP
01305 836 836

Chesil Beach

HOLIDAY PARK

- Overlooking Chesil beach
- Indoor pool
- Entertainment for everyone
- Award-winning restaurant
- Easy access to Weymouth and Portland

HOLIDAY HOMES FROM
£59,995

Portland Road, Weymouth
Dorset DT4 9AG
01305 752 566

Osmington Mills

LODGE PARK

- Luxury lodges
- Outdoor pool
- Idyllic woodland location
- Gym
- Sea views

HOLIDAY LODGES FROM
£199,995

Osmington Mills, Weymouth
Dorset DT3 6HB
01305 818 171

The Jurassic Coast

Experience some of the delights of Dorset. Whether it's a day out at Weymouth Beach or a walk around Corfe Castle, you'll be spoilt for choice with what the areas around our parks have to offer.

Every time you open your door, you'll find yourself walking through 185 million years of history in this unique environment and World Heritage site.

The 95 miles of the Jurassic Coast is home to natural wonders including Durdle Door, the golden cliffs at West Bay, unique marine life at Kimmeridge and, of course, our very own Chesil Beach.

There are so many places to explore and ways to experience this unique environment – on bike, foot or in your own boat or kayak. Your new home in Weymouth really is set in the heart of history.



01
CORFE CASTLE,
ISLE OF PURBECK



02
DURDLE DOOR,
LULWORTH



03
WEYMOUTH BEACH,
WEYMOUTH



05
FARMERS PALMER'S,
ORGANFORD



07
PORTLAND BILL
LIGHTHOUSE,
PORTLAND



04
SEA LIFE CENTRE,
WEYMOUTH



06
MONKEY WORLD,
WAREHAM



08
SWANAGE RAILWAY,
SWANAGE



There's no place like it

Waterside Holiday Group offers unrivalled luxury in our four exquisite parks, located on the breathtaking Dorset and Cornwall coast.

Through family ownership and knowledge that has been passed down through the generations, we've developed a strong understanding of what truly makes a family holiday experience memorable. From the small things like checking your holiday home while you're away, to the big things, like the facilities we have on offer, we want to make your home away from home perfect. It's these extra touches that mean so many holiday home owners choose Waterside.

Family Owned

Launched in 1963, the holiday group has been passed down the Jacobs family through the years. It's these family values that give our parks that extra special family experience with fun and entertainment for all ages to enjoy. Being family-run, we understand the power and importance of creating holiday memories time and time again in a place you can call your own.



FAMILY RUN FOR
60 years

FOUR
★ ★ ★ ★ ★
LUXURY PARKS

OVER
700 owners
ACROSS ALL 4 PARKS



Award-winning

We have been quietly redefining holiday home luxury on the English Coast, with millions of pounds worth of investment, it's no wonder our homes and facilities are award-winning.

Locations

All four of our five-star parks are located on the Great British Coast. Blending into the hottest holiday destinations and the welcoming local community, there's a park to suit every family's needs.

Space to roam

We pride our parks and pitches on having plenty of room for all you love. With space to have private decking, BBQs, car parks and hot tubs, you can make the most of your pitch.

State-of-the-art

Stunning and stylish, our holiday homes have the latest state-of-the-art appliances to make your stay that little more luxurious. From electric fires and equipped utility rooms to skylights and private hot tubs.

Parking spaces

All of our holiday homes receive a spacious personal parking space to accommodate their vehicles. A number of homes can even welcome two cars and have electric charging stations.

Piped gas

Our piped gas supplies means that there isn't the hassle of handling, refilling, and changing cylinders, making it safe and efficient for your holiday needs.



Owners' Card

On becoming a Waterside Holiday Group holiday home owner, we'll provide you with two Owner Cards, which give you instant access and benefits that you would not receive as a regular holiday-goer. From discounts to concierge service, we want to make your time on park as memorable as possible.



Benefits just for owners

Your Owners' Card will give you instant access and discounts in our parks.

Free use of our facilities	20% discount in our bars & restaurants across all four parks	Bookable complimentary use of the Bowleaze Cove spa hydrotherapy pool	20% discount on treatments & products in The Spa	Discounts at local restaurants and attractions
Access to facilities for any guests accompanied by you	10% watersports hire discount	Exclusive owners' events and discounts	Security barrier access 24/7	Complimentary bus travel between Weymouth and Bowleaze Holiday Park & Spa

Share the love

As a holiday home owner with us you'll experience all the benefits of enjoying your very own holiday home. We also want you to be able to share the experience with the people you love. Every Card holder will receive 15 free passes for family and friends throughout the year. Any guests accompanied by you on park will also receive access to all our facilities.

Complimentary concierge

Our complimentary concierge service is offered to our owners only. With a range of services offered free of charge, you can take all the stress away and make the most of your precious holiday time with us.

- Bookings (on park and local)
- Heating
- Local recommendations
- Attraction bookings
- Transport arrangements
- Local event information
- Peace of mind checks
- Forgotten chargers
- Day itineraries
- Plant watering
- Local area info

Meet other owners

Our friendly ownership community is always growing and you can keep up to date with everyone through our dedicated Facebook owners' page. We will also post information about all our exclusive events and activities here.

@WatersideHolidayGroupOwners

Finance Options

At the Waterside Group you can purchase your new or pre-loved holiday home outright with a one-off payment, or join our customers who take out our easy finance package.

We work closely with Santander, one of UK's leading lenders. For more information, please speak to one of our Holiday Sales Team.



Site Fees for the 2023 Season

Bowleaze Cove HOLIDAY PARK & SPA ***** £8,895*	Chesil Beach HOLIDAY PARK ***** £6,695*	Osmington Mills LODGE PARK ***** £8,395*	Tregoad HOLIDAY PARK ***** £5,295*
---	--	---	---

*Plus additional running costs: Metered Gas • Metered Electric • Insurance • Water • Rates. Additional charges apply to lodges.

Lettings Package

We manage and understand booking trends to always remain reactive to market conditions and ensure we maximise your holiday home occupancy.

Our Promise

- ✓ Fully managed and marketed by the Waterside Holiday Group
- ✓ All bookings, payments, guest correspondence, key handling and check in/check out services included
- ✓ Flexible dates – let from as little as 1 week
- ✓ Let midweek, weekends or full weeks
- ✓ Complimentary minor inventory top ups & replacements
- ✓ Fixed Rate Commission: 18.5% +VAT**

**Recharges for cleaning, linen and leisure passes may also apply



Welcome to Bowleaze Cove

★ ★ ★ ★ ★

BOWLEAZE COVE HOLIDAY PARK & SPA

Bowleaze Cove

HOLIDAY PARK & SPA

★ ★ ★ ★ ★

Nestled on the beach at Bowleaze Cove and surrounded by Dorset's Jurassic coastline, Bowleaze Cove Holiday Park & Spa is a unique setting for your holiday hideaway. Luxurious holiday homes and a choice of fun-filled and unwinding pleasures - it's your own piece of paradise.

Your Experience

Five star facilities

A beautiful, modern and stylish retreat with all the comforts of home.

Quality dining

Enjoy a leisurely lunch by the water's edge or a family meal with entertainment.

State-of-the-art

Grown ups can feel great and unwind and children will be spoilt for choice.

Coastal location

You'll never tire of the beach setting, coastal paths and spectacular views.

Stunning scenery

Be captivated by Dorset's natural beauty with coastal walks and sunrise strolls.

Luxurious Spa

Indulge in some relaxation and beauty treatments within an opulent and tranquil space.

01305 836 836 | WATERSIDESALES.CO.UK

BOWLEAZE COVE



“We love the variety at Bowleaze Cove, when the family join us there’s so much for them to do. All the staff on the park are just wonderful, we’ve known some of them for years.”



Bowleaze Cove

HOLIDAY PARK & SPA

★ ★ ★ ★ ★

Relax & Play

Right by the water in one of the most loved seaside towns in the UK, Bowleaze Cove Holiday Park & Spa brings all the pleasures of a perfect holiday to your doorstep.

The Park

The leisure complex at Bowleaze Cove is your space to use, however you wish. A hideaway from the speed of life with a choice of luxurious spa, relaxing sun terrace, heated swimming pool, sauna and fantastic restaurants.

Or, up the pace and indulge in all our indoor and outdoor leisure facilities available to you - gym, water-slides, soft play, astro football pitches, mini Land Rovers, segways, children’s splash pool, toddler pool and lively family entertainment.

That’s the beauty of Bowleaze Cove, simply pick the pace and enjoy a stay which you and your loved ones will treasure.

Speak to our team

For more information on holiday ownership, call or visit:

01305 836 836 | watersidesales.co.uk

Swimming

We take our inspiration for the park from our wonderful surroundings and the joy of water. So, it's no surprise that swimming features highly on our list of entertainment.

Take your pick from: heated indoor swimming pool, heated outdoor swimming pool, two waterslides, children's splash pool, toddler pool with slide, family changing rooms and pool viewing area.

Finally, if you still have any energy, the beach is just a stone's throw away.



The Spa at Bowleaze Cove

You'll receive a warm welcome at our luxury spa and treatment rooms. Indulge in a sauna, hydrotherapy pool, rainforest shower or aroma steam room.

There's also a range of treatments available, including manicures, pedicures, tinting, waxing and facials. Finally, no spa experience is complete without a heavenly massage – from Indian head massage, bamboo massage, hot stone massage or some reflexology.





Eating & Drinking

The Venue

Your entertainment hub by the sea, with a fully licensed bar, is where you'll find all the lively entertainment. Our evening entertainment includes singers, comedians, bands and tribute acts, bingo, game shows, discos and quizzes, as well as a variety of free family activities throughout the day.

Southside Bar & Grill

With over 1 million pounds of investment, Southside Bar & Grill is Weymouth's newest beachside restaurant, celebrating a fantastic location at Bowleaze cove. It has a quirky modern interior and large outdoor seating area, perfect for soaking up the sunshine or keeping an eye on your little ones whilst they enjoy the outdoor play area. You'll love the local ingredients, seafood specials and healthy kid's menu.



The Shack

Stroll into our chilled beachside bar with stunning sea views. Choose from a selection of craft beers, quality wines and fun cocktails, with acoustic guitarists providing entertainment for you to enjoy throughout the season. Simply relax whilst you enjoy the outdoor play area. You'll love the local ingredients, seafood specials and healthy kid's menu.

The Takeaway

When you've had a fun-packed day at Bowleaze Cove, sometimes you'll fancy grabbing a takeaway and enjoying it at your holiday home – or even on the beach. Our takeaway offers family favourites from fish and chips to pizza.

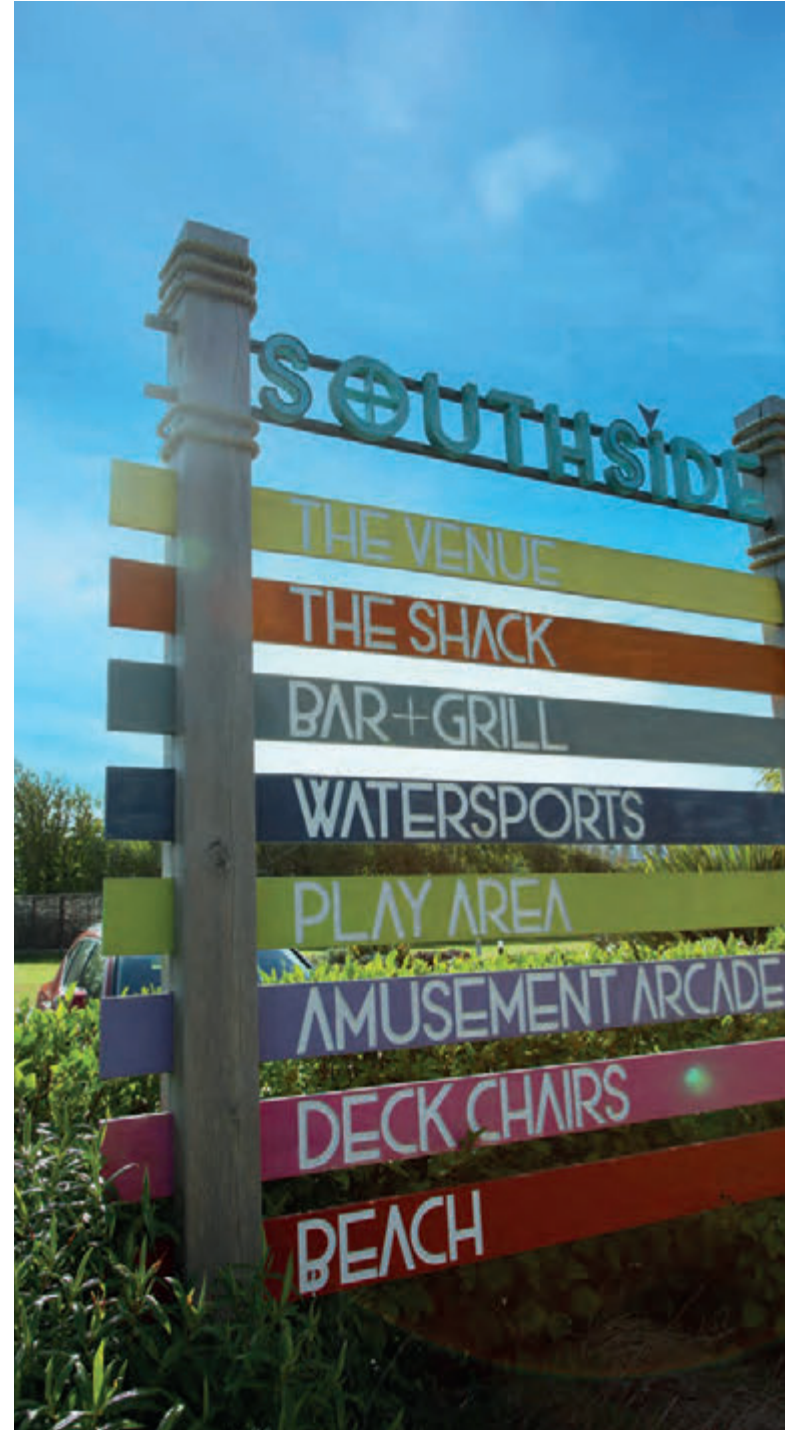
The Sports Bar with Costa Coffee

You'll never need to miss any of your favourite sporting events at our Sports Bar. It caters for all the family and has all the live sport you could wish for. There is a Costa Coffee and food served all day. Plus, a soft play area and a rooftop terrace.

The Dog House

Located next to The Shack, our latest food offering serves hot dogs, burgers and loaded fries. The perfect accompaniment to your cold drink in the sunshine.





Facilities & Activities

Owner events

As an owner you will enjoy a unique programme of events through the year, from summer parties to cabaret acts and the ever popular Live @The Shack with great live music by the beach.

Indoor and outdoor play areas

Children can have fun in any of our three play areas, including our great indoor soft play area, located within the Sports Bar

On park activities

Looking for something extra to do? Why not try your hand at archery or learn to swim, or hire a kayak, Segway or even a mini Land Rover!

Football pitch and outdoor gym

With their hill top position, the football pitch and outdoor gym are in a great location. So why not get some fresh air and keep fit whilst enjoying some amazing views?

Gym

Keep in shape at our gym, which is based in the leisure complex and features cardio machines, weight machines and free weights.

Outdoor cinema

Pull up a deck chair and enjoy movies and sporting events by the water's edge.





THE
STABLES
LUXURY LODGES

RETREAT TO THE WILD

New gated development at Bowleaze Cove Holiday Park & Spa.

Live in the sunshine, swim in the ocean and drink in the wild air, all from your own private retreat.

Discover The Stables, an exclusive collection of 31 luxury lodges, surrounded by unrivalled landscaping and offering our most spacious pitches yet.

Your private retreat awaits you.

Bowleaze Cove
HOLIDAY PARK & SPA

Luxury Specified

Our development is home to 7 different specifications of lodges, with each lodge boasting luxurious interiors.

Our development offers lodges with sumptuous open-plan living as standard, creating new inviting spaces with dramatic split-level roofs, corner fireplaces, king-sized bedrooms, classic and opulent decor and fully wrapped decking.

There is something for every family to live a life less ordinary away from home.



A location like no other

Nestled on the beach at Bowleaze Cove and surrounded by Dorset's Jurassic coastline, you can be sure to enjoy your very own piece of paradise.

Enjoy sunrise strolls along the beach, luxurious lunches by the waters edge, breathtaking coastal walks, an afternoon relaxing on our sun terrace or some time out at our luxurious spa. You'll be sure to find your perfect escape.

Book your exclusive Experience Day today and discover for yourself all The Stables has to offer.



Welcome to Chesil Beach



CHESIL BEACH HOLIDAY PARK

Chesil Beach

HOLIDAY PARK



Stop for a moment. Take in the view of the Fleet Lagoon and beyond to the Isle of Portland. You'll be charmed by the surrounding unspoiled beauty of five-star Chesil Beach Holiday Park. This is one of the most unique holiday home locations in the country.

Your Experience

Overlooking Chesil Beach

You'll fall in love with the panoramic sea views from Dorset's 18-mile Chesil Beach.

Entertainment for everyone

We can promise there's something for all members of your family to enjoy at Chesil Beach.

Relax in luxury

This is your time to unwind – a luxurious and comfortable setting is the best place to start.

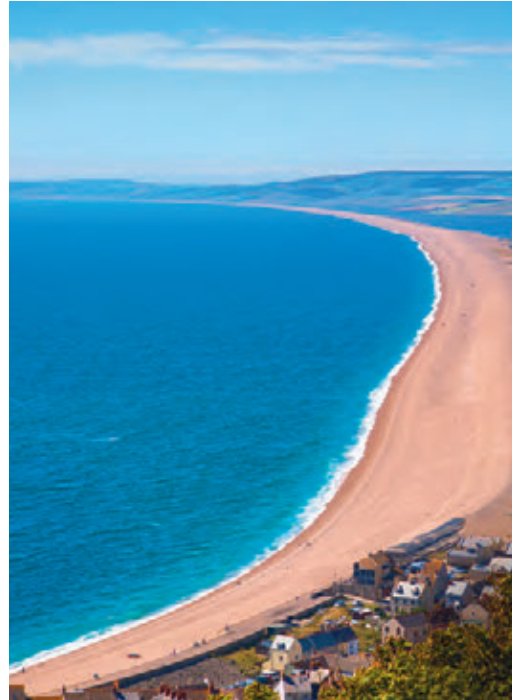
Idyllic location

Just three miles from Weymouth town centre, with direct access to the South West Coastal Path.

Spacious, modern & well equipped

Your luxurious home offers true comfort and style.

01305 836 836 | WATERSIDESALES.CO.UK



Chesil Beach

HOLIDAY PARK

★ ★ ★ ★ ★

Discover Chesil Beach Holiday Park

With all there is to experience in beautiful Dorset, there's still so much to keep you right here. Spend some time relaxing in the pool, or enjoying a delicious meal and live show.

The Park

Chesil Beach Holiday Park is the perfect gateway to the stunning Jurassic Coast, one of UK's most beautiful coastlines. Life can get hectic sometimes, so leave your busy life at home and focus on living life the Chesil way. Chesil Beach Holiday Park is the perfect place to wine and dine or sit back, relax and simply enjoy the views of Chesil Beach from the comfort of your own holiday home.

However you choose to spend your time relaxing – as a getaway to rejuvenate your soul, making memories with friends and loved ones, or cramming in enough fun-filled activities to make you breathless, one thing's for sure... Chesil Beach Holiday Park is ready and waiting.

Speak to our team

For more information on holiday ownership, call or visit:

01305 752 566 | watersidesales.co.uk



Wine & Dine

Enjoy a meal in our delightful modern restaurant, or make the most of summer with al fresco dining on our beautiful sun terrace overlooking the Fleet and Portland. If you still have any energy, the beach is just a stone's throw away.

Our partnerships with local suppliers ensure that our fresh produce is sourced from the Jurassic Coast, including Blue Vinny and Dorset Red cheeses, as well as Portland crab.



“We love visiting Weymouth and always dreamt of having a place for weekend breaks and longer family holidays.

Our holiday home at Chesil Beach is the perfect retreat after a hard day exploring.”



Everything you need!

With its unique location and range of facilities, Chesil Beach Holiday Park has everything you need to make you feel at home.

- Heated indoor pool with slide and spa pool
- Sauna
- Gymnasium
- Indoor soft play area
- Outdoor adventure play area
- Pool tables
- Outdoor gym
- Sports field
- Outdoor terrace with views across Chesil Beach
- Chesil Venue Bar and entertainment area
- Breeze Bar & Grill
- Launderette
- Onsite shop



Welcome to Osmington Mills



Osmington Mills

LODGE PARK



Down a country lane in the peaceful hamlet of Osmington Mills, our lodge park nestles in a beautiful wooded valley that drops down to Osmington Beach and unfolds to spectacular sea views. Within the park, our gorgeous lodges provide the perfect rural retreat.

Your Experience

Luxury lodges

First time visitors never fail to be amazed by the sheer beauty of our stunning lodges.

Countryside & sea views

Our park provides the perfect spot for enjoying woodland views of Osmington Mills and sea views across Weymouth Bay.

Designed for living

Our luxury lodges offer open plan living, state-of-the art kitchens and appliances, modern bathrooms and relaxing bedrooms.

Idyllic woodland location

Pretty, secluded and enveloped in natural woodland.

Country Club

Relax in the bar, restaurant, swimming pool and sun terrace. There's also a garden with a children's play area to enjoy.

Large balconies

Many of our lodges benefit from extra outdoor space with glass balconies, providing an unobstructed view.



Osmington Mills

LODGE PARK

★ ★ ★ ★ ★

Discover Osmington Mills Lodge Park

Without question, the beauty of Osmington is the woodland surroundings and the lovingly designed lodges. Our lodge owners will tell you it's a little oasis of luxury, relaxation and peace.

The Park

Osmington Mills Lodge Park has a very special atmosphere. Set in the heart of the woods overlooking Weymouth Bay, Osmington Mills Lodge Park is the very definition of tranquillity. With the Country Club providing delicious food and drink and a refreshing swim – there's little reason to leave the park at all!

But we're sure you'll want to take the footpath to the water's edge at least. You'll find a shingle beach with rock pools to explore and spectacular views of the rugged coastline. Venture out a little further and you'll find Weymouth's famous golden sandy beach and a choice of bars and restaurants.

And when you're ready, retreat to the peaceful setting of your luxurious Osmington Mills home. Entertain guests on your spacious decking, enjoy a stroll to the Country Club for a drink and a bite to eat, or lay back, close your eyes and clear your thoughts.

There's nowhere else quite like Osmington Mills Lodge Park to relax and unwind, all within one of Dorset's most picturesque valleys.

Speak to our team

For more information on holiday ownership,
call or visit:

01305 818 171 | watersidesales.co.uk



“Owning a holiday home here has enriched our life in ways I never dreamed of. It’s an escape from everyday life whenever we need it.”



The Country Club

Home to the licensed bar and restaurant, the exclusive Country Club overlooks the swimming pool and sun terrace. The bar serves a tempting selection of tasty snacks and meals, all of which you can enjoy at your lodge if you wish. There’s plenty of opportunities for family relaxation here with complimentary Wi-Fi, a lounge, pool table and a garden with children’s play area.



The gym at Osmington Mills





Victory Lockwood



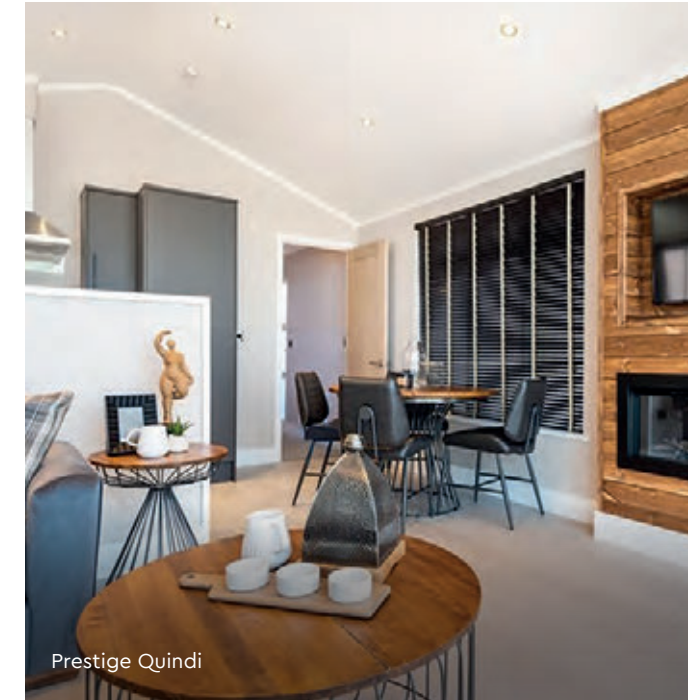
Willerby Vogue



Willerby Waverly



Prestige Plantation House



Prestige Quindi

Osmington Mills
LODGE PARK
★★★★★
Holiday Lodges
from £199,995
TO DISCOVER ALL OUR STOCK,
VISIT THE PARK.

Bowleaze Cove
HOLIDAY PARK & SPA
★★★★★
Chesil Beach
HOLIDAY PARK
★★★★★
Holiday Homes
from £59,995
TO DISCOVER ALL OUR STOCK,
VISIT THE PARK.



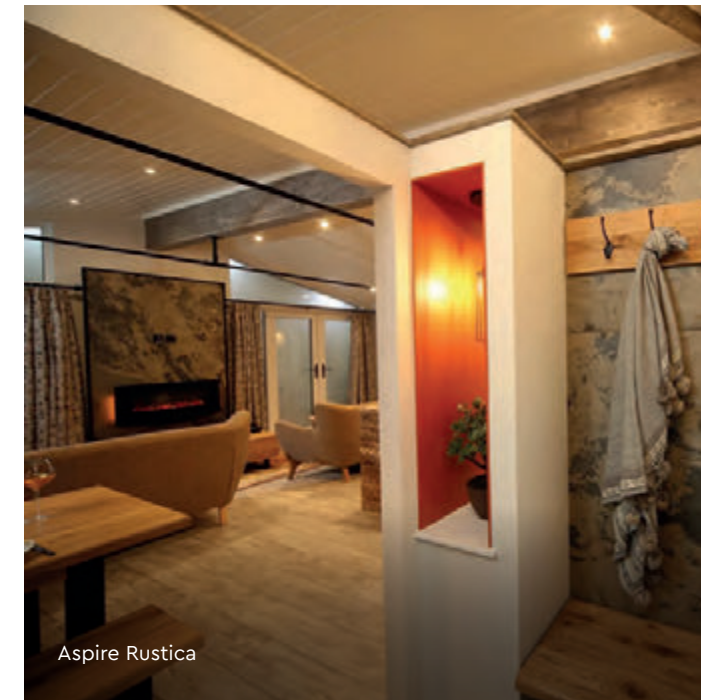
Sunseeker Infinity



ABI Westwood



Aspire Santorini



Aspire Rustica

Welcome to Tregoad

★ ★ ★ ★ ★

TREGOAD HOLIDAY PARK,
ST MARTIN, NR LOOE,
CORNWALL, PL13 1PB

01503 390 004

Tregoad

HOLIDAY PARK

★ ★ ★ ★ ★

Discover Tregoad Holiday Park

Tregoad Holiday Park is our latest addition to the Waterside family, providing unrivalled luxury near the quintessential town of Looe in Cornwall. The park's stunning hilltop location means you can enjoy sweeping views of the unique Cornish coast from the comfort of your own holiday home.

The *park*

Experience Tregoad's unrivalled luxury with brand new facilities and superfast Wi-Fi across the park. The heated indoor pool allows you to relax and swim as you wish, and if you love the great outdoors then there are plenty of opportunities to take a stroll to the wildlife ponds in the park. Or, why not branch out further to the beach at nearby Millendreath?

Tregoad is a fantastic park for families, with a kids' adventure play area and family room to keep the youngsters entertained while the grown-ups relax and unwind. A holiday home in Tregoad is perfect for a classic Cornish experience that the whole family can enjoy time and time again.

Holiday Homes from £59,995

- Views of the Looe Valley
- Peaceful and scenic location
- Indoor pool
- Stargazy Bar & Grill
- Nature trails and wildlife lakes

01305 836 836 | WATERSIDESALES.CO.UK



SAMPHIRE COVE

LUXURY LODGES

A NEW RURAL HIDEAWAY

New gated development at Tregoad Holiday Park.

Nestled in our quiet Cornish valley and inspired by the nature that surrounds us, we welcome a luxurious collection of 12 lodges.

With every holiday home offering a view to spark adventure, from an interior that provides a resplendent retreat.

Your rural hideaway awaits you.



Luxury Specified

Our development is home to a collection of lodges, all boasting beautiful interiors for you to enjoy.

The lodges offer open plan living overlooking an incredible valley view. With traditional textures and finishes inside and some of our largest decking welcoming you outside for warmer weather

These lodges are the perfect retreat for those who are looking for a luxurious rural hideaway.



For the adventurers

Nestled within 55 acres of glorious woodland and grounds, you can be sure to find your perfect adventure.

Whether that's exploring the surrounding countryside that's right on your doorstep, taking in the beautiful Cornish beaches with their unspoilt views or visiting quaint traditional fishing villages.

Book your exclusive Experience Day today and discover everything the Cornish countryside has to offer at Samphire Cove.

Plaidy Point & Hannafore Heights

Breathtaking valley and sea views

Generously spaced plots

Two premium car parking bays per pitch

Piped gas

Superfast Wi-Fi

Space for large decking areas

Hot tubs available

BBQs welcome

South facing development

Perfectly located to enjoy the sunset

Premium landscaping

Cul-de-sac layout (low traffic)

Holiday Homes from £59,995



Plaidy Point



Plaidy Point



Hannafore Heights



Hannafore Heights

Tregoad
HOLIDAY PARK

Cornwall PL13 1PB

Chesil Beach
HOLIDAY PARK

Weymouth DT4 9AG

Osmington Mills
LODGE PARK

Weymouth DT3 6HB

Bowleaze Cove
HOLIDAY PARK & SPA

Weymouth DT3 6PP

Our park locations

5 easy steps to purchasing your holiday home

1

Fall in love with the park

2

Make sure the running costs are comfortable for you

3

Find a beautiful holiday home & choose an available location to put it on

4

Pay a deposit & arrange a date to financially complete the purchase

5

Move in & start enjoying your new lifestyle within 3 weeks!

Book your
**Experience
Day**

Next steps...

Securing your holiday home is quick and simple and we guarantee you'll wonder why you haven't done this sooner. However, we would recommend a personal guided tour before you make any decisions on your Waterside park and location. We're excited to introduce you to our fabulous parks and welcome you to the Waterside way of life. You deserve this!

For more information on holiday home ownership, call or email

01305 836 836

INFO@WATERSIDESALES.CO.UK

FAQ's

Why should I choose the Waterside Group?

We were established in 1963, and ever since we have sought to be the market leaders within our industry. We seek to provide an unrivalled holiday home ownership experience with service to reflect the sought after holiday homes on the prestigious park. Our continual programme of investment has seen millions of pounds invested to improve our parks and the service that we offer, and this will continue moving forward. Most importantly, our commitment to service and personal connection with our holiday home owners is extremely important to us. We are here to help you every step of the way.

Can my friends & family visit?

Most certainly! For many, being able to invite family and friends to stay is part of the joy of owning a holiday home. We are happy to make the arrangements and greet your family and friends onto the park if you are unable to. Use of all the leisure facilities is complimentary for all of your immediate family (parents, grandparents, children and grandchildren). Wider family (such as uncles, aunties, brothers and sisters) receive complimentary entry to our entertainment venues and are very welcome to use the leisure facilities for a small charge. There is no external membership available to our facilities, all the facilities are exclusively for owners and holiday makers.

Can I choose the location of my holiday home?

Yes, for new and pre-loved holiday homes we will show you which locations are suitable for the size of holiday home you are purchasing and then the choice is yours!

Are there age limits on the holiday home?

No, we do not have an age limit for the holiday homes on our parks, however we do require them to be kept in a good condition. The licence was drawn up in association with our industry trade body, the British Holiday Home and Parks Association (BH&HPA), in association with the Office of Fair Trading.

Can I make money from letting out the holiday home?

No, the holiday home is a lifestyle investment, but you can help offset the site fees through our fully managed letting scheme.

Can I live in my holiday home?

No, your holiday home is designed to be enjoyed as your perfect retreat, not as a permanent residence.

How many months is the park open for?

Bowleaze Cove, Chesil Beach and Tregoad are open from the 1st March to the 15th January every year giving you an amazing 46 week season. This means you can enjoy your holiday home over the Christmas and New Year period if you so wish. Most on-park facilities are open from mid March until the end of October. Osmington Mills is open from 15th March to the 15th January.

Do I own the land?

No, you own your holiday home, but not the land upon which it is sited.

Can I bring pets?

Certainly. As an owner you are welcome to bring your pet with you, particularly as the surrounding area is fantastic for dog walking. As it is a family park we do restrict certain breeds of dog (please ask for details) and request that they are kept on a lead whilst in the park.

What do site fees cover?

The annual site fees include park maintenance, security and also all elements of the owners package, which is why The Waterside Group is so special.

Do you offer insurance for holiday homes?

Yes, and we are able to provide you with a quotation.

Is it possible to let my holiday home?

Yes, fully managed letting packages are available through our award-winning holiday's brand.

Enjoy your
new home
within
3 weeks!*

*Subject to stock and pitch and decking availability.



WATERSIDE



FAMILY RUN
FOR
60 years

FOUR
★ ★ ★ ★
LUXURY PARKS

OVER
700 owners
ACROSS ALL 4 PARKS



For more information on holiday home ownership, call or email
01305 836 836 | INFO@WATERSIDESALES.CO.UK