

Riverside Commercial Opportunity

25 Thameside

Henley on Thames – RG9 2LJ

BWP

KEMPTON

CARR

CROFT

Self-Contained Riverside Commercial Unit – 2,630 sq ft (GIA)

For Sale/To Let

25 Thameside, Henley on Thames, Oxfordshire, RG9 2LJ



Summary:

- A rare opportunity to buy or lease a riverside commercial unit suitable for a variety of uses.
- The property is located in an enviable position fronting the river on Thameside in the popular market town of Henley on Thames.
- Total Ground Floor Accommodation C.2,630 sq.ft (GIA)
- Grade II listed.
- Flexible Rear Outside Area Measuring c.555 sq ft
- Vaulted Hall
- Ideal for a range of Commercial Uses including company HQ, Gallery/Exhibition Space, Restaurant & Office.
- Elected for VAT.
- Parking available by separate negotiation

25 Thameside, Henley on Thames, Oxfordshire, RG9 2LJ

Location:

The Property is located on Thameside overlooking the river in the centre of the town.

Henley-on-Thames is a vibrant market town on the River Thames. It has an abundance of independent shops, a selection of national chains and a thriving range of restaurants, bistros, cafes and pubs. Famous for the world-renowned Henley Royal Regatta and Henley Festival. Set beside the River Thames, the town is situated 38 miles west of central London, 10 miles north of Reading and 25 miles from central Oxford.

Henley benefits from good transport links to both the M4 (J8/9) and the M40 (J6) and has the addition of regular train services to London Paddington, with an average time of 45 minutes at peak times

Description:

The ground floor commercial unit, which was formally an Indian Restaurant, comprises of the ground floor of a two-story Grade II listed property and measures approx. 2,630 sq.ft (GIA). The unit is currently stripped back to shell condition and includes a rear raised outside courtyard.

On the 1st floor there is a two-bedroom apartment which is not included but could be available by separate negotiation.

VAT:

The property is elected for VAT.

Areas:

Gross Internal Area 244.4 m2 (2,630 sq ft)
NB. Information provided by the Vendor, not measured by BWP Commercial Property.

Planning:

The property is currently Class E and suitable for a range of uses within this class.

EPC:

TBC

Term:

The unit is being offered by way of a new full repairing and insuring lease for a term to be agreed.

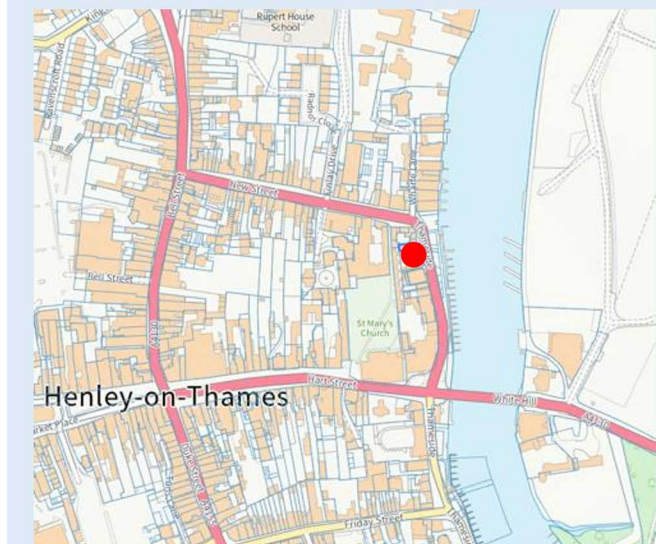
Asking rent of £67,500 pa
(exclusive of Business Rates, VAT and Insurance).

Or

Offers in Excess of £1,100,000 For the Freehold Interest.

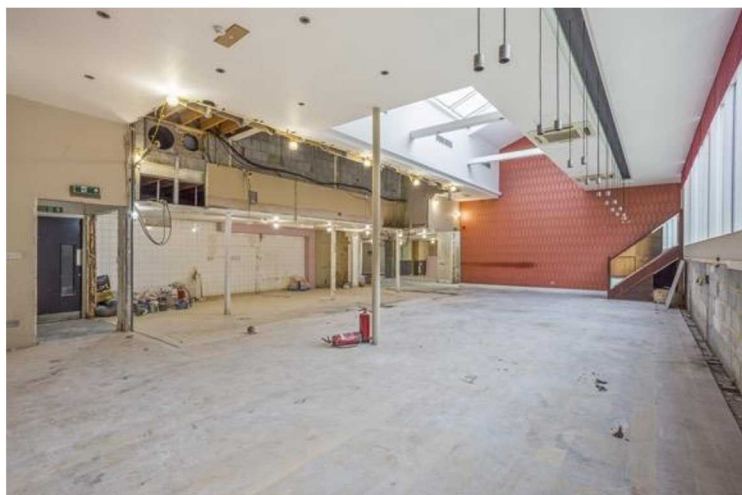


NB. The plan is for identification only. © Crown Copyright OS 0100055500



NB. The plan is for identification only. © Crown Copyright OS 0100055500

25 Thameside, Henley on Thames, Oxfordshire, RG9 2LJ



Business Rates:

The property has previously had a rateable value of £69,229. It is currently unrated as of May 2023.

For Rates payable the occupier should make their own enquiries with the South Oxfordshire District Council.

Service Charge:

TBC

Timing:

Immediately available.

Further Information:

Matthew Jackson Director
e: matthew@bwpcommercialproperty.com
t: + 44 (0)20 3411 1112
m: + 44 (0) 774 131 8999

Charley Burgess Senior Associate
e: charley@bwpcommercialproperty.com
t: + 44 (0)20 3411 1112
m: + 44 (0) 747 136 1485

Ron Gower
e: ron.gower@kemptoncarr.co.uk
t: + 44 (0)1628 771221
m: + 44 (0) 7831 899443

25 Thameside, Henley on Thames, Oxfordshire, RG9 2LJ



CGI – Suggested Use – Gallery/Exhibition Space

25 Thameside, Henley on Thames, Oxfordshire, RG9 2LJ



CGI – Suggested Use – Riverside Office Space

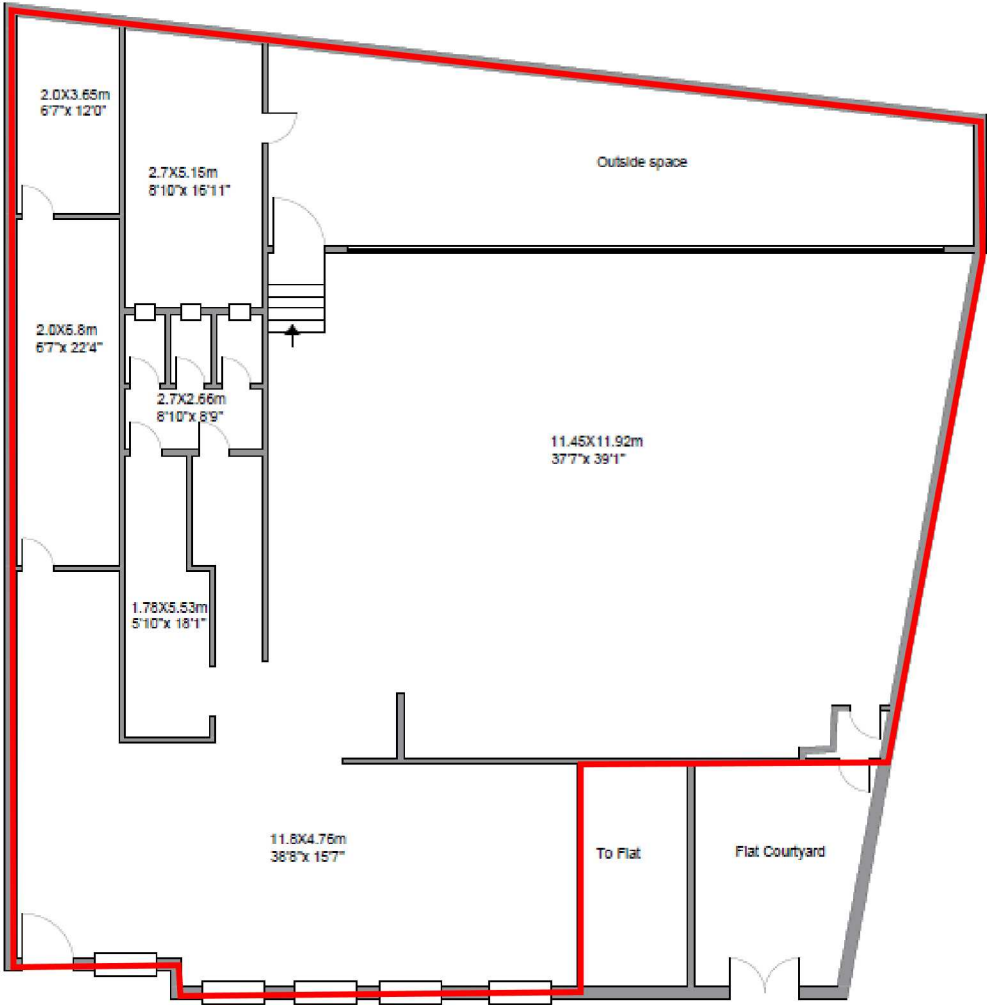
25 Thameside, Henley on Thames, Oxfordshire, RG9 2LJ



Areas:

	Gross Internal Area	
	Sqm	Sq Ft
Ground Floor	192.6	2,074
Ground Floor Storage	20.9	225
Ground W/Cs/Ancillary	17.0	183
Outside Storage	13.9	150
TOTAL GIA	244.4	2,631
Outside Space	51.6	555

NB. Information provided by the Vendor, not measured by BWP Commercial Property.



The logo for BWP Commercial Property Ltd, consisting of the letters 'BWP' in a light blue, sans-serif font, centered within a solid grey square.

BWP Commercial Property Ltd
12A Hart Street
Henley-on-Thames,
Oxfordshire RG9 2AU
www.bwpcommercialproperty.com

The logo for Kempton Carr Croft, featuring the words 'KEMPTON', 'CARR', and 'CROFT' stacked vertically in white, sans-serif capital letters. Each word is centered within a horizontal bar of a different color: dark blue for 'KEMPTON', orange for 'CARR', and pink for 'CROFT'. The entire logo is enclosed in a white rectangular border.

Kempton Carr Croft
Chatsworth House
29 Broadway
Maidenhead, SL6 1LY
www.kemptoncarr.co.uk

Charley Burgess

e: charley@bwpcommercialproperty.com
t: + 44 (0)1491 818 180
m: + 44 (0) 7471 361 485

Iain Duckworth Director MRICS

e: iain@bwpcommercialproperty.com
t: + 44 (0)1491 818 180
m: + 44 (0) 7977 130 170

Ron Gower

e: ron.gower@kemptoncarr.co.uk
t: + 44 (0)1628 771221
m: + 44 (0) 7831 899443

Disclaimer: BWP Commercial Property Ltd, their clients and any joint agents give notice that: These particulars do not form any part of an offer or contract and must not be relied upon as statement of facts or representations of fact. No responsibility is taken of any statements within these particulars. BWP Commercial Property are not authorized to make or give representations or warranties in relation to the property here or elsewhere, either on their own behalf or on behalf for their client. The text, photographs and plans are for guidance only. All measurements, areas, distances are approximate. It should not be assumed that the property has the appropriate planning permission. BWP Commercial Property have not tested any service, equipment of facilities. Purchasers must satisfy themselves by inspection or otherwise.