



Flat 5 Prispfen House Prispfen Drive, Silverton, EXETER, EX5 4DR

A surprisingly spacious 3 bedroom first floor apartment forming part of a sought after residential development surrounded by its own extensive and superbly maintained communal grounds. This impressive apartment comes with a large lounge/diner with balcony, a well fitted kitchen, two en-suite shower rooms, cloakroom/WC, double glazed sash style windows, Economy 7 night storage heating, garage and allocated parking space nearby.

Quietly situated on the rural outskirts of the charming village of Silverton, Prispfen House is within easy walking distance of local shops and amenities. Set in an elevated position surrounded by trees this, exclusive development overlooks a fishing lake and nestles amidst glorious rolling countryside.

Importantly, Prispfen House has recently had Fibre Broadband supplied to the courtyard and residents' can apply to get their homes connected in the usual way. Electronic wrought iron gates operated with intercom or entry code provide this prestigious development with a heightened sense of privacy and security.

Strong interest anticipated and early viewings recommended.

Guide Price £249,950

Flat 5 Prispen House Prispen Drive, Silverton, EXETER, EX5 4DR



- Prestigious Residential Development/Country Retreat
 - Large Lounge/Diner with Balcony
 - Spacious Cloakroom/WC
 - Private Parking Space
- Importantly a 'Self Managed Leasehold'
 - Spacious Kitchen
 - Economy 7 Night Storage Heating & Wood Framed Double Glazing
- Communal & Private Entrance Halls
 - 3 Bedrooms (two with en-suite shower rooms)
 - Garage in Block Close by

Communal Entrance

Cloakroom/WC

Private Hallway

Communal Grounds

Lounge/Diner
20'2" x 15'3" (6.17m x 4.65m)

Garage

Kitchen
11'8" x 9'3" (3.56m x 2.82m)

Parking Space

Service Charge £1,850 P.A.

Bedroom 1
18'2" x 9'3" (5.56m x 2.82m)

Lease Information - 999 years from 2002

En-suite Shower Room

Description & Location

Bedroom 2
14'2" x 8'9" (4.32m x 2.67m)

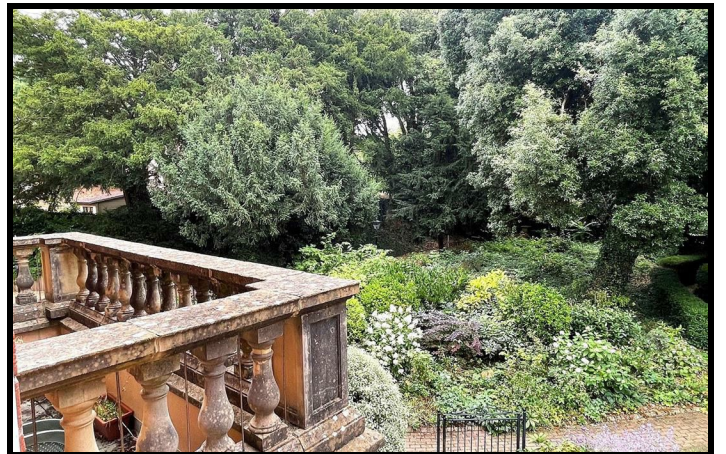
En-Suite Shower Room

Bedroom 3
8'7" x 7'10" (2.64m x 2.39m)

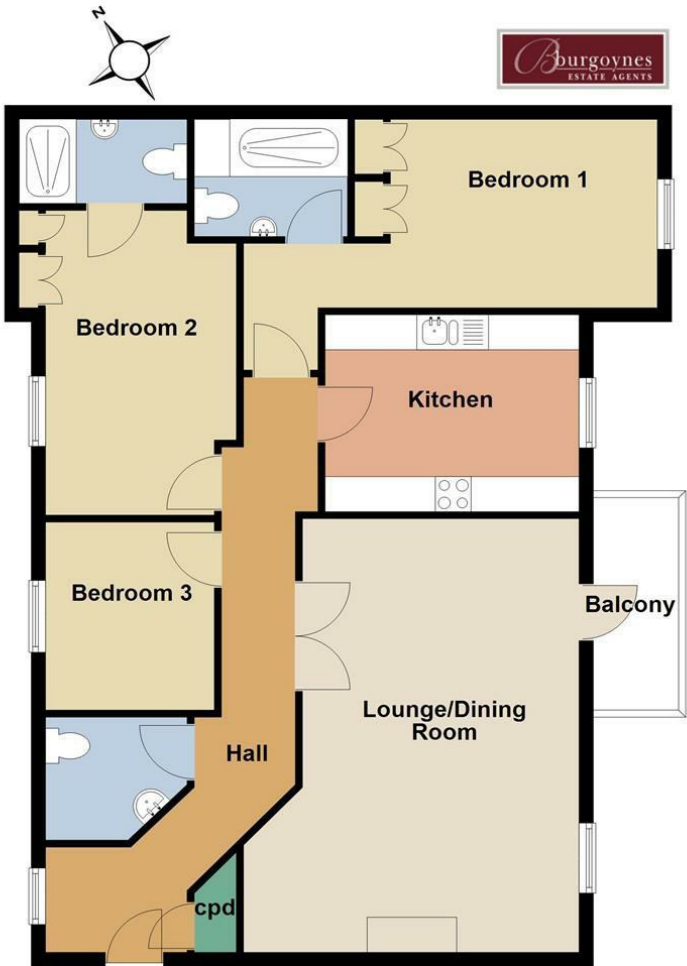


Directions





Floor Plan



Total area: approx. 92.5 sq. metres (995.2 sq. feet)
Please note that whilst every attempt has been made to ensure the accuracy of this plan, all measurements are approximate and not to scale. This floor plan is for illustrative purposes only and no responsibility is accepted for any other use.
Flat 5, Prispfen House, Silverton

These particulars, whilst believed to be accurate are set out as a general outline only for guidance and do not constitute any part of an offer or contract. Intending purchasers should not rely on them as statements of representation of fact, but must satisfy themselves by inspection or otherwise as to their accuracy. No person in this firms employment has the authority to make or give any representation or warranty in respect of the property.

