



Flat 26, Meyer Court Butts Road

Exeter, EX2 5PW

A well presented 1 bedroom first floor apartment within one of Exeter's most popular McCarthy and Stone retirement developments conveniently situated close to Heavitree shopping centre, bus stop and Heavitree Pleasure Park, arguably the most popular park in Exeter and now with vibrant café/community hub venue. This impressive retirement complex has the attraction of a resident House Manager for added security and peace of mind, mobility scooter store, residents' car park and an excellent range of communal facilities & social events.

Asking Price £129,500

Flat 26, Meyer Court Butts Road

Exeter, EX2 5PW



- NO ONWARD CHAIN
- Kitchen
- Electric Heating & uPVC Double Glazing
- Communal Gardens & Residents' Car Park
- Private Entrance Hall
- Double Bedroom
- Emergency Pull Cords & Waist Height Power Sockets
- Lounge/Diner
- Shower Room
- Excellent Communal Facilities & Events

Private Entrance Hall

Ground Rent - £395 P.A.

Lounge/Diner

23'2" x 10'7" maximum (7.07m x 3.23m maximum)

Kitchen

7'7" x 7'0" (2.32m x 2.15m)

Bedroom

16'10" x 9'2" maximum (5.15m x 2.81m maximum)

Shower Room

6'10" x 5'6" (2.09m x 1.69m)

Communal Grounds

Information on Meyer Court

Lease Information

Service Charge £3,050. P.A.



Directions

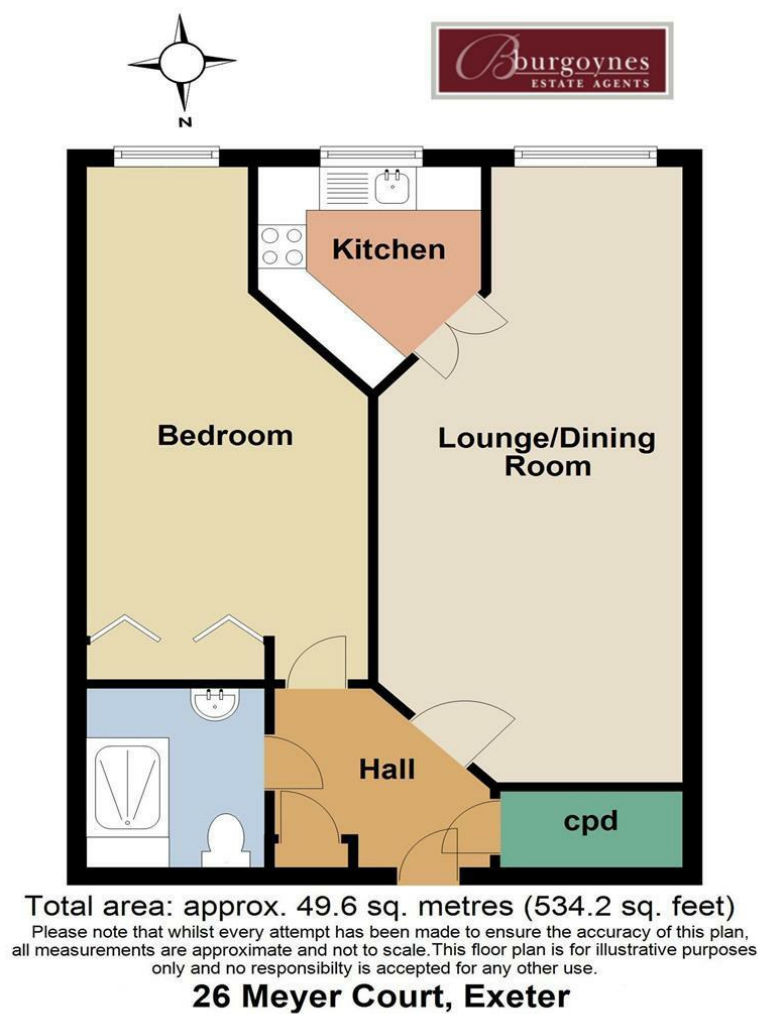




Communal Library / Reading Room



Floor Plan



These particulars, whilst believed to be accurate are set out as a general outline only for guidance and do not constitute any part of an offer or contract. Intending purchasers should not rely on them as statements of representation of fact, but must satisfy themselves by inspection or otherwise as to their accuracy. No person in this firms employment has the authority to make or give any representation or warranty in respect of the property.

