

HARLEY HOUSE, MARYLEBONE ROAD, LONDON NW1 5HN



HARLEY HOUSE, MARYLEBONE ROAD, LONDON NW1 5HN

An exceptionally spacious four bedroom apartment with three reception rooms comprising some 2,745 sq ft/255 sq m of well presented accommodation set on the 2nd floor of a renowned portered mansion block. Harley House is situated between Regent's Park and fashionable Marylebone High Street, both within a few minutes' walk.

The nearest tube stations are Regent's Park (Bakerloo Line) - 250 metres, and Baker Street (Jubilee, Circle, Hammersmith & City Line and the Metropolitan Line) - 0.25 miles.

- 4 Bedrooms • 3 Reception Rooms • 3 Bathrooms (1 en suite) • Kitchen/Breakfast Room • Reception Hall • Guest Cloakroom • Utility Room • Lift • 24 Hour Porters/Security

EPC Rating: D Council Tax Band: H

£3,000 PER WEEK

UNFURNISHED

TENANTS FEES: As well as paying the rent, tenants may also be required to make the following permitted payments:

Holding Deposit (maximum of 1 week's rent)

Security Deposit equivalent to 5 or 6 weeks' rent (AST tenancies)

Utilities, Communications services charges including TV licence, and Council Tax

Please contact us for information regarding any further Tenants permitted payments under the Tenant Fees Act 2019

Misrepresentation Act 1967. This brochure and the descriptions and measurements herein do not constitute representation and whilst every effort has been made to ensure accuracy, this cannot be guaranteed.

ARLINGTON

RESIDENTIAL

020 7722 3322

arlingtonresidential.com

















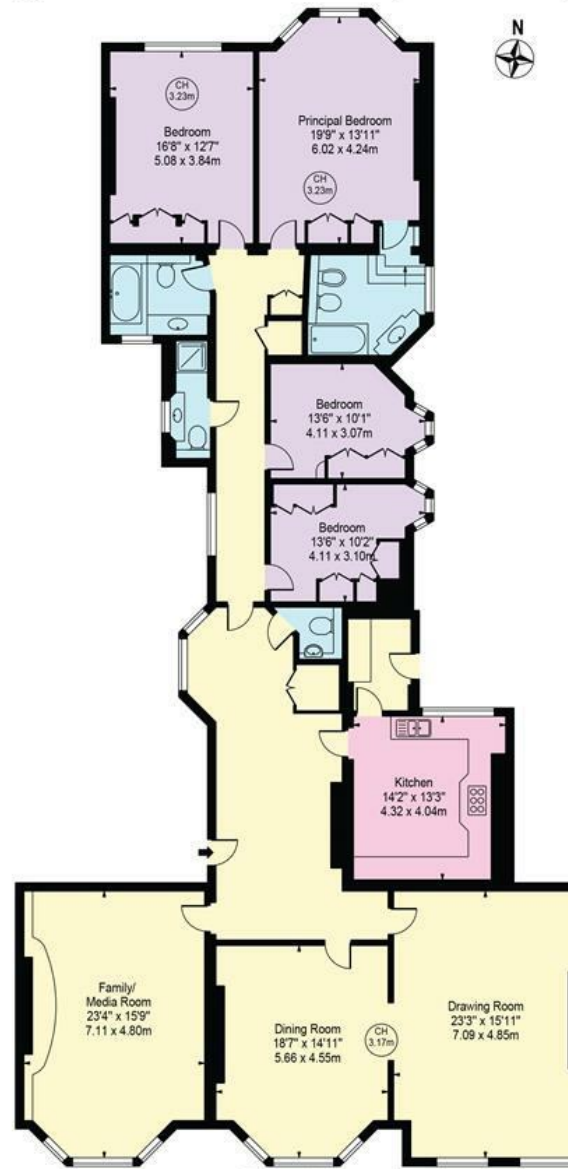






Harley House

Approx. Gross Internal Area 2745 Sq Ft - 255.02 Sq M



Second Floor

For Illustration Purposes Only - Not To Scale

This floor plan should be used as a general outline for guidance only and does not constitute in whole or in part an offer or contract. Any intending purchaser or lessee should satisfy themselves by inspection, searches, enquiries and full survey as to the correctness of each statement. Any areas, measurements or distances quoted are approximate and should not be used to value a property or be the basis of any sale or let.

Copyright Morriarti Photography & Design LTD