

RAVENS CROFT AVENUE, LONDON NW11 0SA



RAVENSCROFT AVENUE, LONDON NW11 0SA

An outstanding family home located on a beautiful tree lined street in Golders Green offering in excess of 2,937 sqft of living accommodation. This magnificent property is set over three floors and boasts modern features throughout. The ground floor comprises two spacious reception rooms perfect for entertaining, a separate fully-fitted kitchen, utility room and guest cloakroom. On the second and third floor there are 7 generously sized bedrooms and two family bathrooms. The principal bedroom has a further en-suite and walk in wardrobe. Additional benefits include a private garden at the front and rear of the property. Permit parking is also available

Ravenscroft Avenue is a beautiful tree lined street ideally located close to many shops, restaurants and transport links including Brent Cross shopping centre which is approximately 1.7 miles away. Transport links include: Golders Green (Northern line) - approx. 0.5 miles Hampstead Heath (Overground) - approx 2.4 miles The beautiful Hampstead Heath and Golders Hill Park is also within easy reach

- 7 bedrooms • 3 bathrooms • 2 reception rooms • Fully-fitted kitchen • Private garden

EPC Rating: C Council Tax Band: G

£1,442 PER WEEK

NOT SPECIFIED

TENANTS FEES: As well as paying the rent, tenants may also be required to make the following permitted payments:

Holding Deposit (maximum of 1 week's rent)

Security Deposit equivalent to 5 or 6 weeks' rent (AST tenancies)

Utilities, Communications services charges including TV licence, and Council Tax

Please contact us for information regarding any further Tenants permitted payments under the Tenant Fees Act 2019

Misrepresentation Act 1967. This brochure and the descriptions and measurements herein do not constitute representation and whilst every effort has been made to ensure accuracy, this cannot be guaranteed.

ARLINGTON

RESIDENTIAL

020 7722 3322

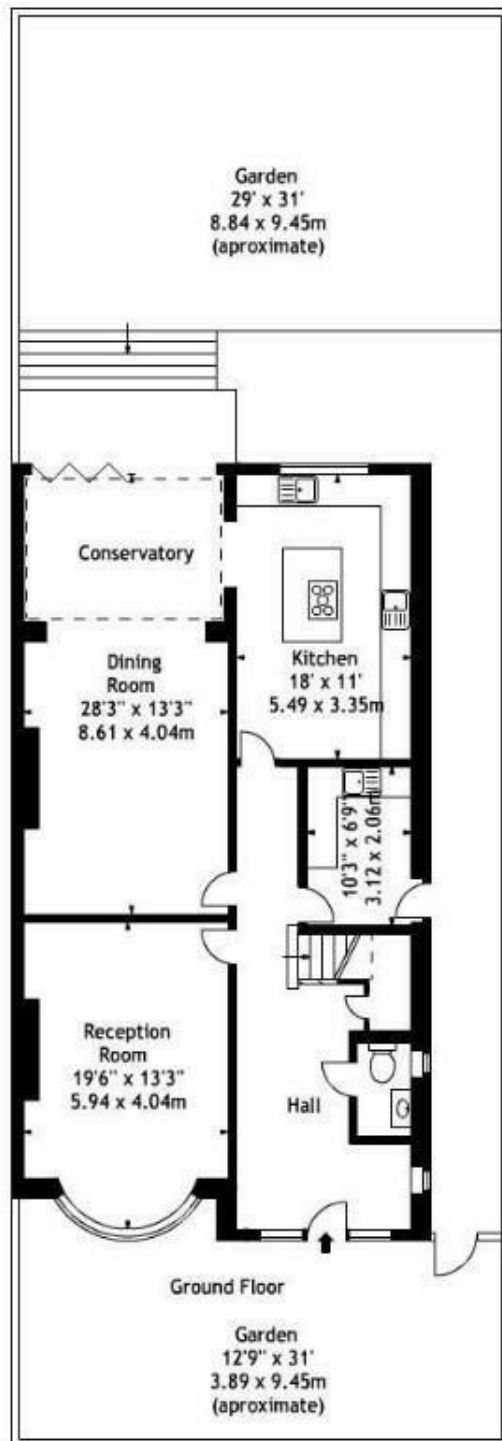
arlingtonresidential.com



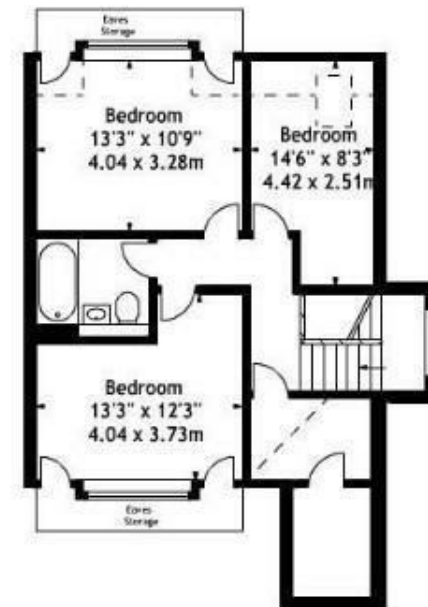
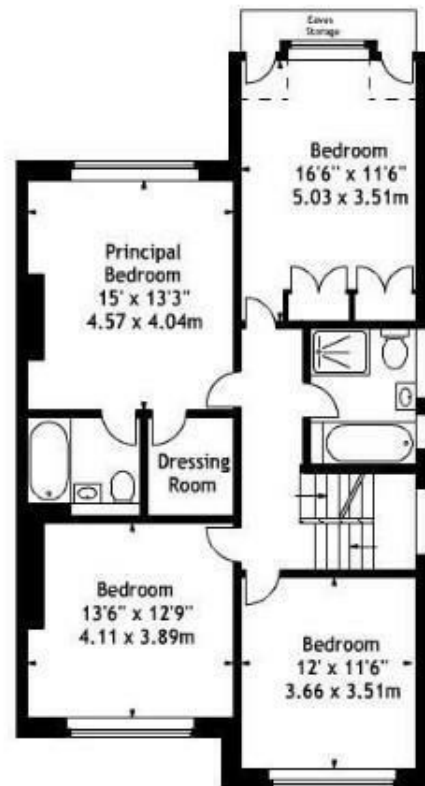








Ravenscroft Avenue,
Golders Green, NW11
Approx. Gross Internal Area
2822 Sq Ft - 262.16 Sq M



Measured in accordance with RICS guidelines. Every attempt is made to ensure accuracy, however all measurements are approximate. This floor plan is for illustrative purposes only and is not to scale.
© Datagraphy Ltd 2019
Photographs * Floorplans * Virtual Tours
Tel: 0845 443 4401 www.datagraphy.com