



Hanover House, St John's Wood NW8

ARLINGTON
RESIDENTIAL



Located moments from St John's Wood High Street, a stunning 2 bedroom 2 bathroom apartment (973 Sq Ft / 90.39 Sq m) forming part of Hanover House, which also has the benefit of a 24 hour porter.

It has its own private entrance, a separate lock up storage area and patio garden.

The property has been tastefully refurbished by the current owners to an exceptional standard. Hanover House is perfectly situated within walking distance of the restaurants and boutiques of St John's Wood and a short distance from both Regent's Park and Primrose Hill. It is just a few minutes walk to St John's Wood tube Station on the Jubilee Line.

EPC Rating: D

Council Tax Band: G

GUIDE PRICE £1,245,000

Share of Freehold

Joint Sole Agent

Service Charge: £3,800 per annum

Current Ground Rent: T.B.C.

Lease Length: 980 years remaining (share of freehold)

ARLINGTON

RESIDENTIAL

8 Wellington Road, St. John's Wood, London NW8 9SP
info@arlingtonresidential.com

+44 (0)20 7722 3322
arlingtonresidential.com

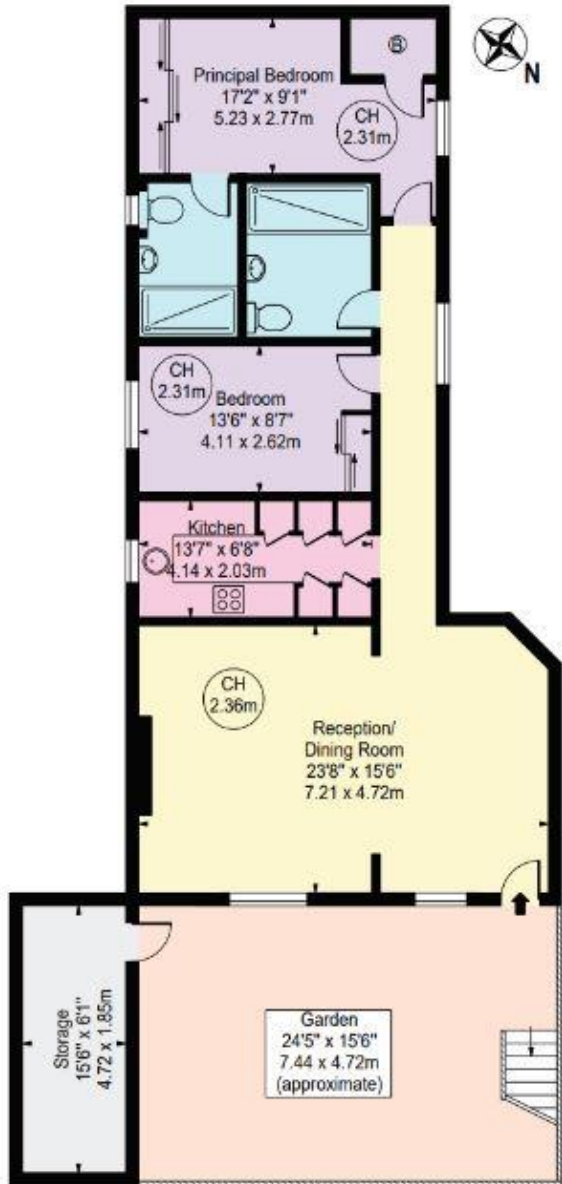




Greenberry Street

Approx. Gross Internal Area 973 Sq Ft - 90.39 Sq M
(Excluding Storage)

Approx. Gross Internal Area Of Storage 94 Sq Ft - 8.73 Sq M



Lower Ground Floor