

ST JOHN'S WOOD PARK, ST JOHN'S WOOD, LONDON NW8 6NL



ST JOHN'S WOOD PARK, ST JOHN'S WOOD, LONDON NW8 6NL

A smart three bedroom apartment set within a sought after complex on the border of Swiss Cottage and St John's Wood.

The property is set on the second floor of a sought after gated development with 24 hour concierge and parking. The flat provides open plan living spaces including a double reception room and kitchen. Benefits include air conditioning and communal heating. Storage lockers and lock-up garages are available to rent separately.

Swiss Cottage Underground Station (Jubilee Line) is 0.2 miles away whilst St Johns Wood High Street is approximately half a mile away.

- 3 Bedrooms • 3 Bathrooms • Double Reception Room • Semi-Open Plan Kitchen • Lift • 24 Hour Concierge • Off Street Parking • Camden Council Tax Band F • EPC - C • Furnished / Unfurnished

EPC Rating: C Council Tax Band: F

£1,300 PER WEEK

FURNISHED/UNFURNISHED

TENANTS FEES: As well as paying the rent, tenants may also be required to make the following permitted payments:

Holding Deposit (maximum of 1 week's rent)

Security Deposit equivalent to 5 or 6 weeks' rent (AST tenancies)

Utilities, Communications services charges including TV licence, and Council Tax

Please contact us for information regarding any further Tenants permitted payments under the Tenant Fees Act 2019

Misrepresentation Act 1967. This brochure and the descriptions and measurements herein do not constitute representation and whilst every effort has been made to ensure accuracy, this cannot be guaranteed.

ARLINGTON

RESIDENTIAL

020 7722 3322

arlingtonresidential.com





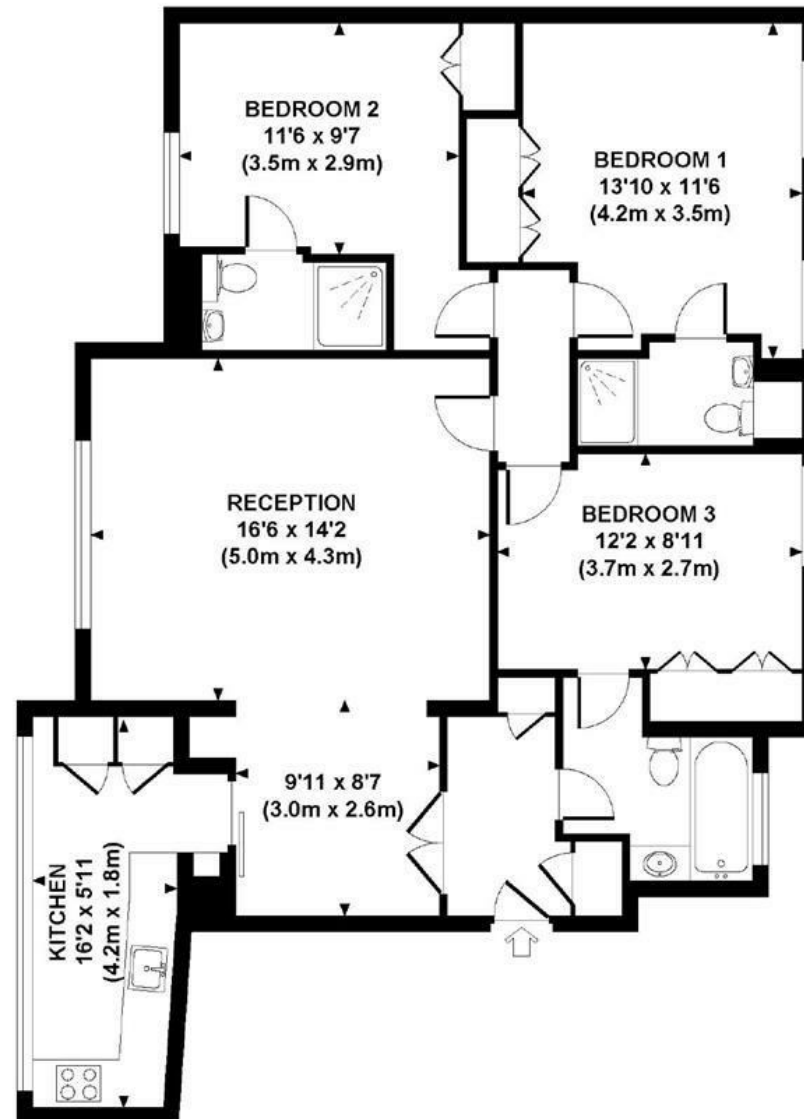






34 BOYDELL COURT

Second FLOOR



APPROXIMATE GROSS INTERNAL AREA 1062 SQ FT / 99 SQ M

Although every attempt has been made to ensure accuracy, all measurements are approximate.
The floor plan's for illustrative purposes only and not to scale. Measured in accordance to RICS standards.
DE-PHOTOGRAPHY.NET