

ST JOHN'S WOOD PARK, LONDON NW8 6NG



ST JOHN'S WOOD PARK, LONDON NW8 6NG

Recently refurbished three bedroom, three bathroom apartment of approximately 1,150sqft/106.8sqm, set within a secure purpose built portered block. This apartment comprises a separate fully fitted kitchen, a large sized reception, three double bedrooms and three bathrooms. The property further benefits from 24 hour concierge, a lift and parking. Boydell Court is well located for St. John's Wood and Swiss Cottage underground stations and amenities of both St. John's Wood High Street and Finchley Road. Council Tax Band: F (Camden).

- Lounge/dining room • Utility room • Conservatory • En suite to master bedroom • Original cast iron fireplaces • Picture rails and dado rails • Parking for several vehicles

EPC Rating: D Council Tax Band: F

£1,300 PER WEEK

UNFURNISHED

TENANTS FEES: As well as paying the rent, tenants may also be required to make the following permitted payments:

Holding Deposit (maximum of 1 week's rent)

Security Deposit equivalent to 5 or 6 weeks' rent (AST tenancies)

Utilities, Communications services charges including TV licence, and Council Tax

Please contact us for information regarding any further Tenants permitted payments under the Tenant Fees Act 2019

Misrepresentation Act 1967. This brochure and the descriptions and measurements herein do not constitute representation and whilst every effort has been made to ensure accuracy, this cannot be guaranteed.

ARLINGTON

RESIDENTIAL

020 7722 3322

arlingtonresidential.com

















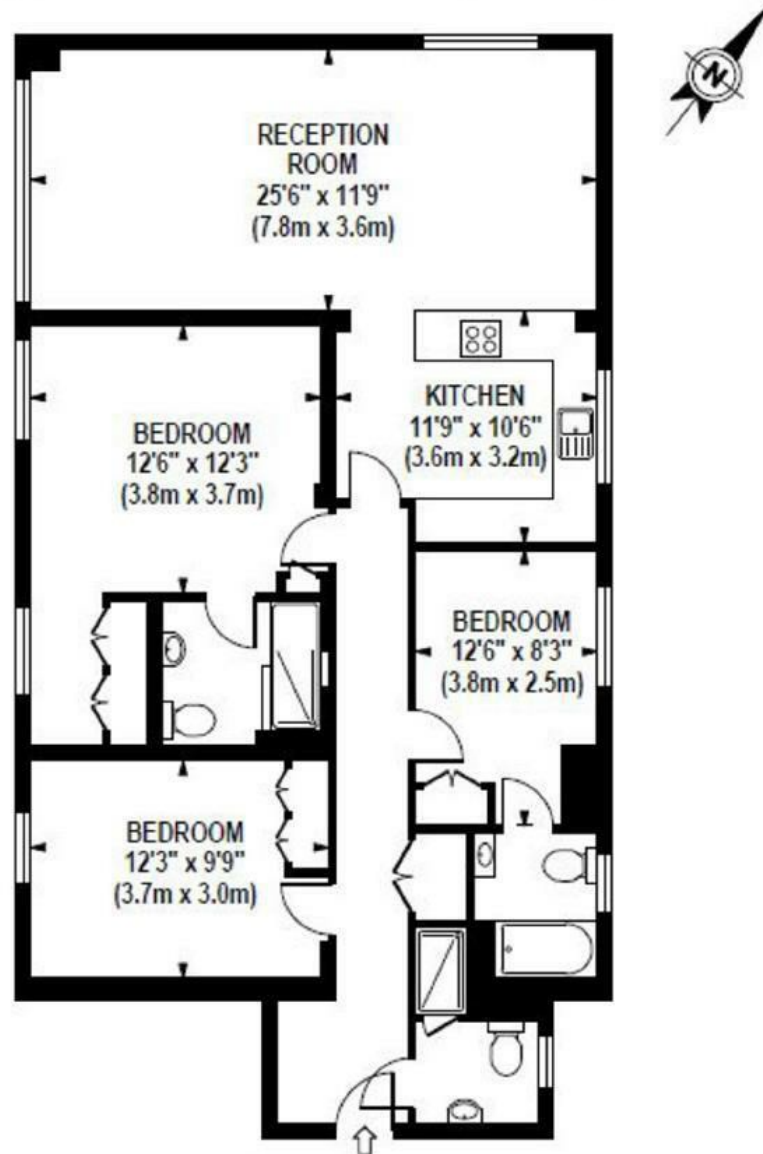






BOYDELL COURT

Approximate Gross Internal Area 1150 sq ft / 106.8 sq m



SIXTH FLOOR
GROSS INTERNAL
FLOOR AREA 1150 SQ FT

Although every attempt has been made to ensure accuracy, all measurements are approximate. The floor plan's for illustrative purposes only and not to scale. Measured in accordance to RICS standards.