



Loudoun Road, St John's Wood NW8

**ARLINGTON**  
RESIDENTIAL



A well presented modern four-bedroom town house providing an excellent family home close to the American School and St John's Wood's High Street. This 1,878 sq ft/ 174 sq m house is arranged over three floors and offers well planned accommodation featuring a large kitchen/breakfast room, leading onto a private rear patio garden. The house also benefits from a lock up garage with access from the rear garden. St John's Wood Jubilee line tube is approximately 0.4 miles.

**ASKING PRICE: £2,800,000**

**TENURE: FREEHOLD**

**EPC RATING: D**

**Council Tax: Band H**

# ARLINGTON

RESIDENTIAL

8 Wellington Road, St. John's Wood, London NW8 9SP

[info@arlingtonresidential.com](mailto:info@arlingtonresidential.com)

+44 (0)20 7722 3322

[arlingtonresidential.com](http://arlingtonresidential.com)













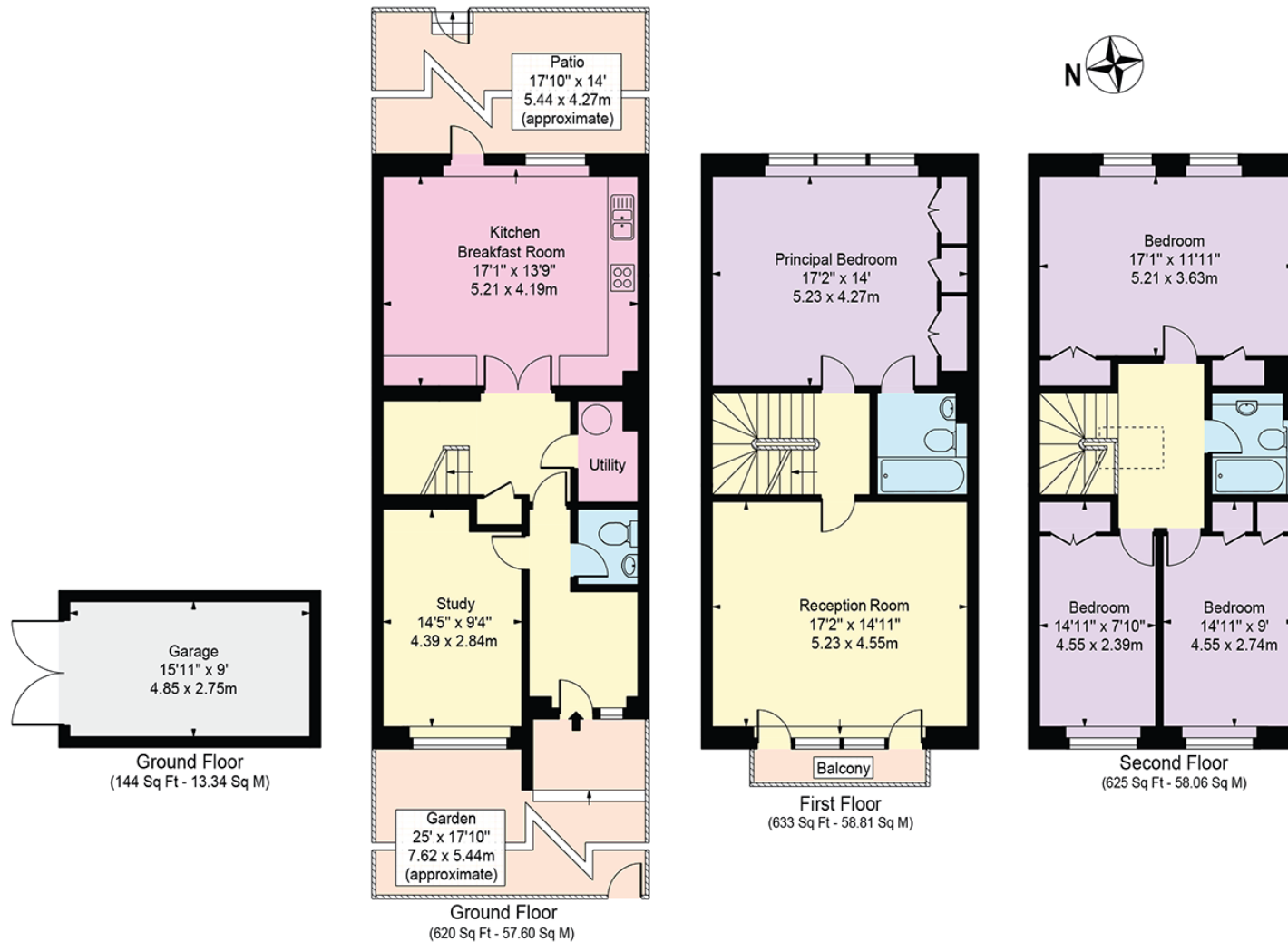




# Loudoun Road

Approx. Gross Internal Area 1878 Sq Ft - 174.47 Sq M  
(Excluding Garage)

Approx. Gross Internal Area Of Garage 144 Sq Ft - 13.34 Sq M



For Illustration Purposes Only - Not To Scale

This floor plan should be used as a general outline for guidance only and does not constitute in whole or in part an offer or contract. Any intending purchaser or lessee should satisfy themselves by inspection, searches, enquiries and full survey as to the correctness of each statement. Any areas, measurements or distances quoted are approximate and should not be used to value a property or be the basis of any sale or let.

Copyright Morriarti Photography & Design LTD