

ST STEPHENS CLOSE, AVENUE ROAD, ST JOHN'S WOOD NW8 6DB



ST STEPHENS CLOSE, AVENUE ROAD, ST JOHN'S WOOD NW8 6DB

An opportunity to rent this fantastic, bright and extremely spacious apartment which has recently been renovated to a very high standard. Comprising a large double reception with open plan modern kitchen, a principal bedroom suite with separate dressing room and en-suite bathroom, four further bedrooms with built in wardrobes and three additional bathrooms (two en-suite). St Stephens Close is a very sought after block situated within a private road off of the world famous and very prestigious Avenue Road a short walk to Regent's Park and St John's Wood High Street. St Stephens Close also benefits from on site concierge, beautiful mature manicured gardens and first come basis off street parking.

The closest station is St John's Wood (Jubilee Line) which is only 0.5 miles away and the Outer Circle of Regent's Park is also only 0.5 miles away

- PRINCIPAL BEDROOM WITH DRESSING ROOM AND EN-SUITE BATHROOM • 4 FURTHER BEDROOMS • 3 FURTHER BATHROOMS (2 EN-SUITE) • PORTERED BLOCK • MATURE MANICURED GARDENS • PARKING

EPC Rating: C Council Tax Band: H

£4,950 PER WEEK

UNFURNISHED

TENANTS FEES: As well as paying the rent, tenants may also be required to make the following permitted payments:

Holding Deposit (maximum of 1 week's rent)

Security Deposit equivalent to 5 or 6 weeks' rent (AST tenancies)

Utilities, Communications services charges including TV licence, and Council Tax

Please contact us for information regarding any further Tenants permitted payments under the Tenant Fees Act 2019

Misrepresentation Act 1967. This brochure and the descriptions and measurements herein do not constitute representation and whilst every effort has been made to ensure accuracy, this cannot be guaranteed.

ARLINGTON

RESIDENTIAL

020 7722 3322

arlingtonresidential.com















Decorative damask wallpaper in shades of pink and cream.

White bedside table with a lamp and books, including 'THE FASHION BOOK'.

Bed with white tufted duvet and a white headboard.

Decorative wall sculpture consisting of a grid of orange and black squares.

Window with a grey blind.

White coffee table with a metal frame, holding books and decorative items.



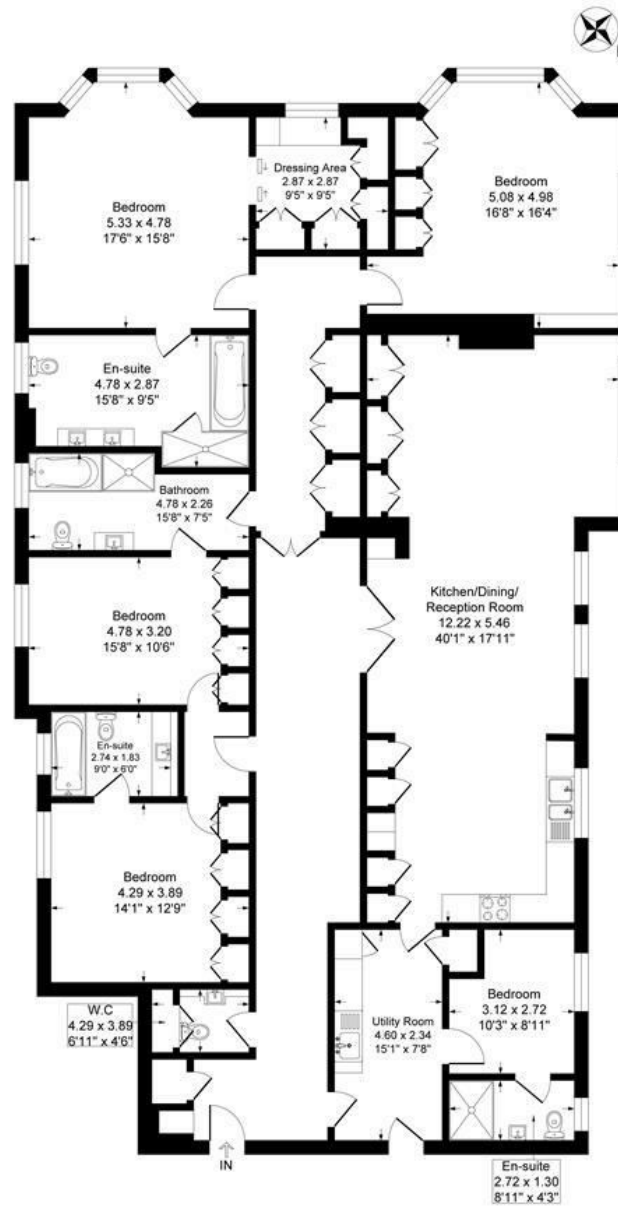






St Stephens Close, Avenue Road, London, NW8

Approximate Gross Internal Floor Area = 262.9 sq m / 2830 sq ft



Second Floor

Illustration for identification purposes only, measurements are approximate, not to scale.