



Elliott Square, Primrose Hill, NW3

ARLINGTON
RESIDENTIAL

Welcome to Elliott Square - a prestigious address boasting a recently refurbished three-bedroom townhouse that exudes elegance and charm. This delightful property, built in 1970, offers a generous 1,752 sq ft of living space, perfect for a growing family or those who love to entertain.

As you step inside, you are greeted by a spacious reception room that is ideal for hosting guests or simply relaxing. With five bedrooms on offer, there is ample space for a home office, guest room, or a growing family's needs. The four bathrooms ensure convenience and comfort for all residents. The house is arranged over three floors and features open plan living spaces with wood flooring to most of the rooms. Benefits include off street parking and a private decked patio garden.

Situated in a private square, this townhouse offers a retreat from the hustle and bustle of city life, while still being within walking distance of the vibrant amenities of both Swiss Cottage and Primrose Hill. Whether you fancy a leisurely stroll in the park or a shopping spree in the local boutiques, this location has it all. The nearest underground stations are Swiss Cottage (Jubilee line) 0.5 miles and Chalk Farm (Northern line) 0.6 miles.

GUIDE PRICE: £1,795,000

FREEHOLD

LONDON BOROUGH OF CAMDEN

COUNCIL TAX BAND – G

EPC RATING - C

ARLINGTON

R E S I D E N T I A L

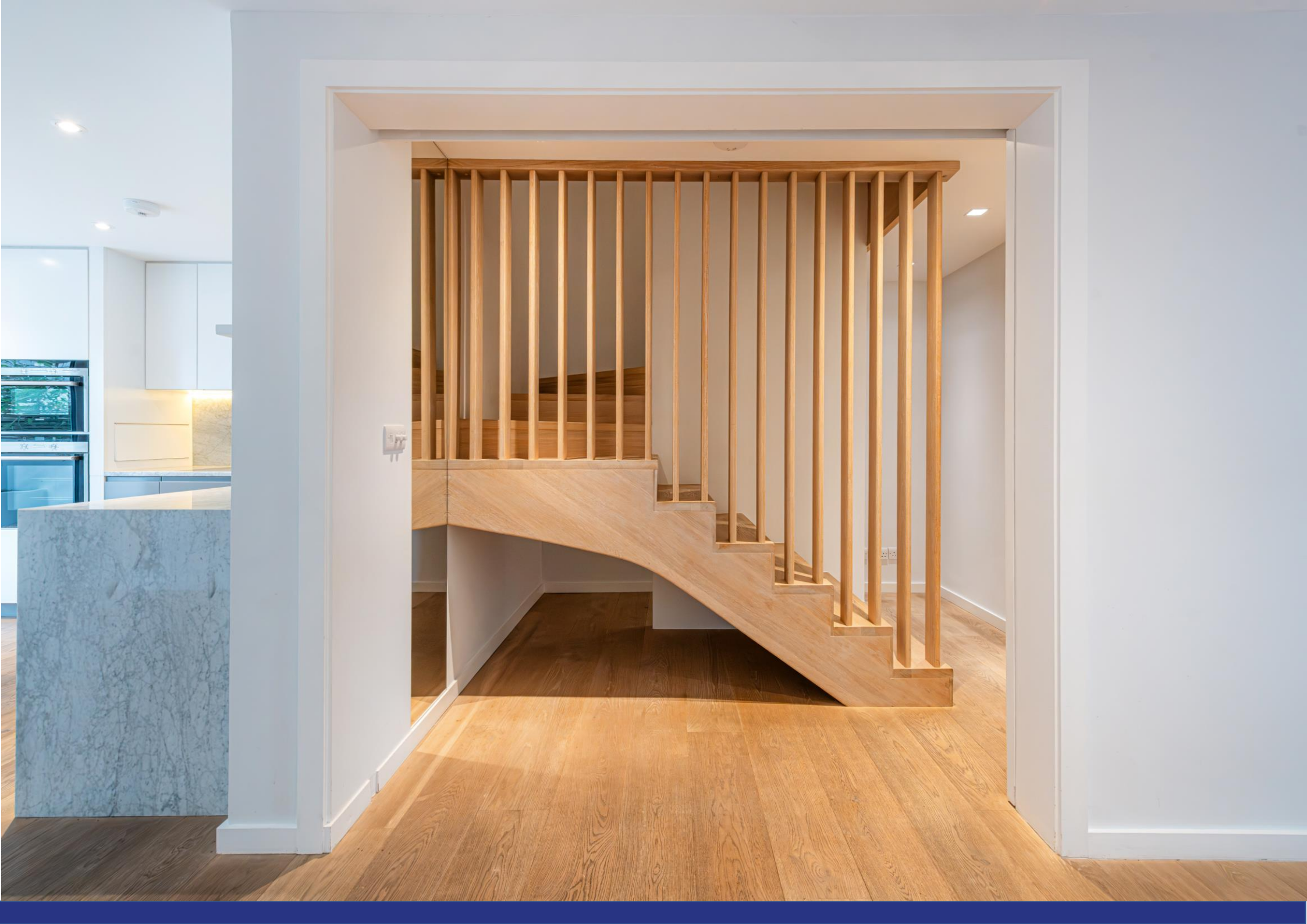
8 Wellington Road, St. John's Wood, London NW8 9SP
info@arlingtonresidential.com

+44 (0)20 7722 3322

arlingtonresidential.com

IMPORTANT NOTICE: These particulars are issued for guidance only. They are intended to give a fair overall description of the property and do not constitute a warranty of any kind or to be an offer or contract in whole or in part. Nothing in these particulars shall be deemed to constitute a representation that the property is in good structural condition nor that any services, appliances, equipment or facilities are in good working order, notwithstanding. That all information contained in these particulars, both in the text and in any plans and photographs is given in good faith, intending purchasers should make their own enquiries as to the accuracy of all matters upon which they intend to rely. Measurements are given for guidance only.











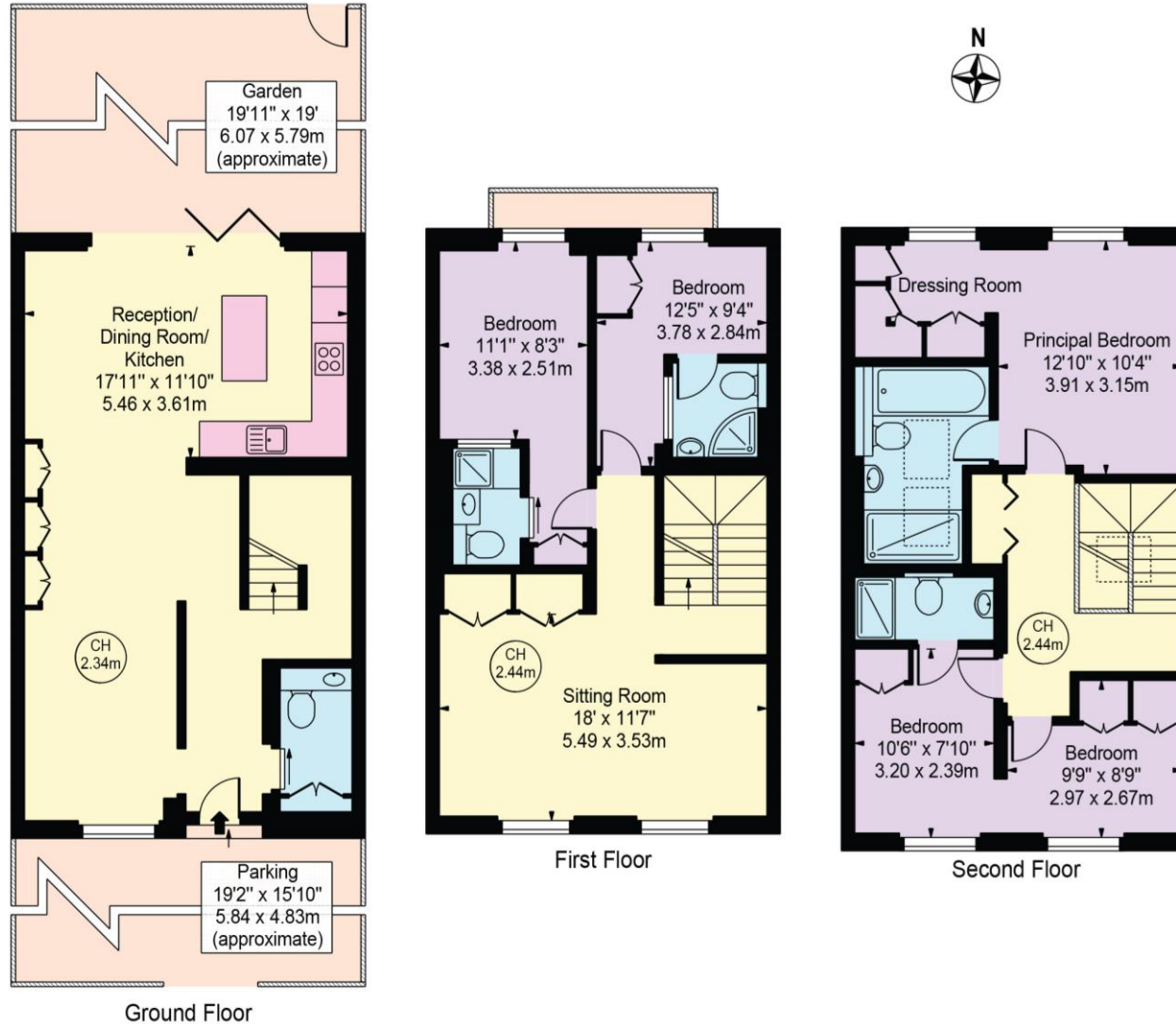






Elliott Square

Approx. Gross Internal Area 1752 Sq Ft - 162.77 Sq M



For Illustration Purposes Only - Not To Scale

This floor plan should be used as a general outline for guidance only and does not constitute in whole or in part an offer or contract. Any intending purchaser or lessee should satisfy themselves by inspection, searches, enquiries and full survey as to the correctness of each statement. Any areas, measurements or distances quoted are approximate and should not be used to value a property or be the basis of any sale or let.

Copyright Morriarti Photography & Design LTD