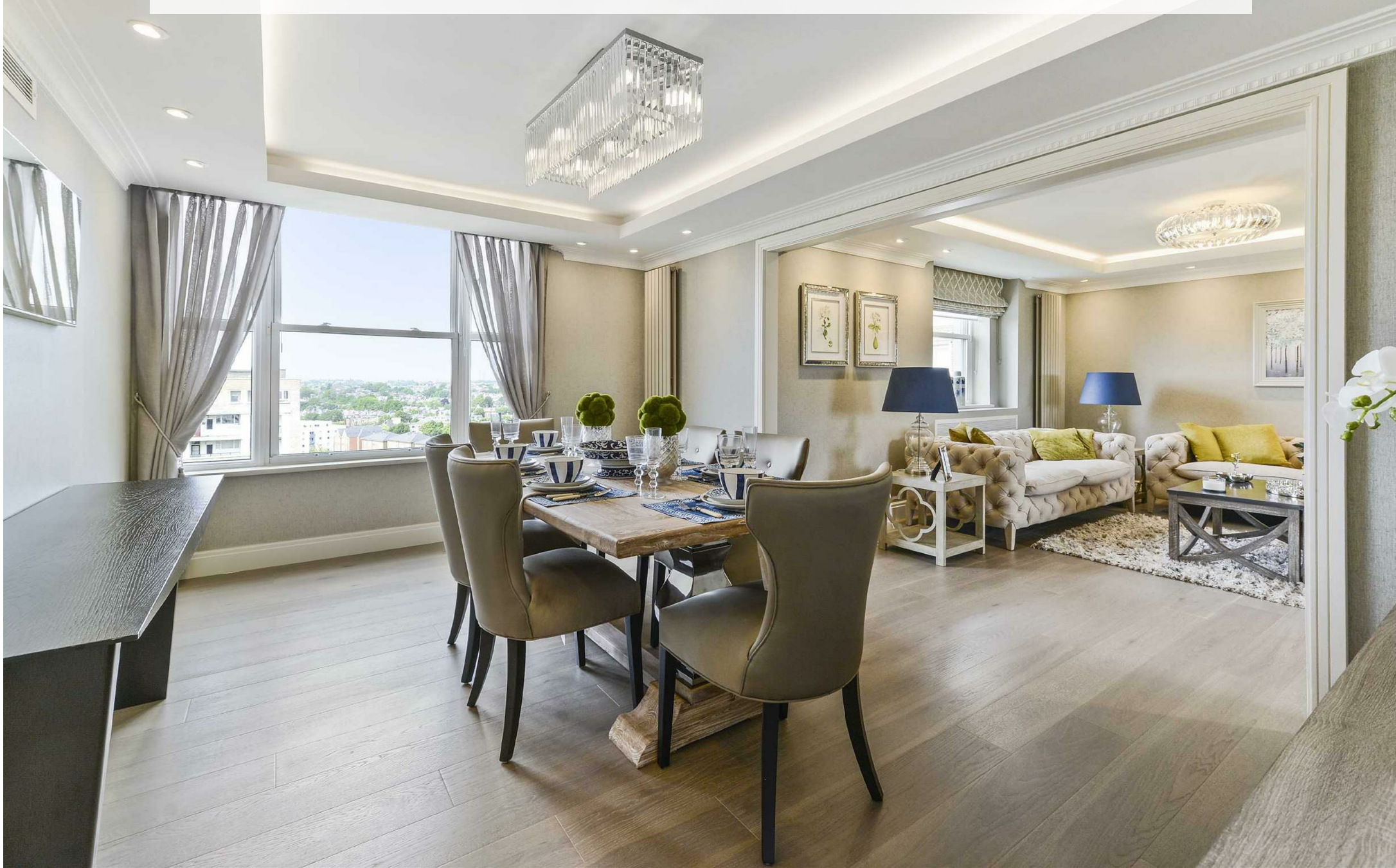


BOYDELL COURT, ST JOHN'S WOOD PARK, ST JOHN'S WOOD NW8 6NH



BOYDELL COURT, ST JOHN'S WOOD PARK, ST JOHN'S WOOD NW8 6NH

A stunning 5 bedroom duplex penthouse apartment (approximately 2,164 sq ft / 201 sq m) arranged over the eighth and ninth floors of a sought after, gated residential development set in landscaped gardens.

Boydell Court offers 24 hour concierge, off street parking and on site property management. The apartment is located close to Swiss Cottage's amenities and within an easy walk (10-15 mins) of St John's Wood High Street and the American School in London.

Swiss Cottage Underground Station (Jubilee Line) is approximately 0.2 miles away

- 5 BEDROOMS • 4 BATHROOMS (3 EN SUITE) • GUEST CLOAKROOM • 2 INTERCONNECTING RECEPTION ROOMS • KITCHEN/BREAKFAST ROOM • UTILITY ROOM • LIFT • 24 HOUR CONCIERGE • ALLOCATED PARKING SPACE • LONDON BOROUGH OF CAMDEN

EPC Rating: C Council Tax Band: H

£2,495 PER WEEK
FURNISHED/UNFURNISHED

TENANTS FEES: As well as paying the rent, tenants may also be required to make the following permitted payments:

Holding Deposit (maximum of 1 week's rent)

Security Deposit equivalent to 5 or 6 weeks' rent (AST tenancies)

Utilities, Communications services charges including TV licence, and Council Tax

Misrepresentation Act 1967. This brochure and the descriptions and measurements herein do not constitute representation and whilst every effort has been made to ensure accuracy, this cannot be guaranteed.

ARLINGTON

RESIDENTIAL

020 7722 3322

arlingtonresidential.com

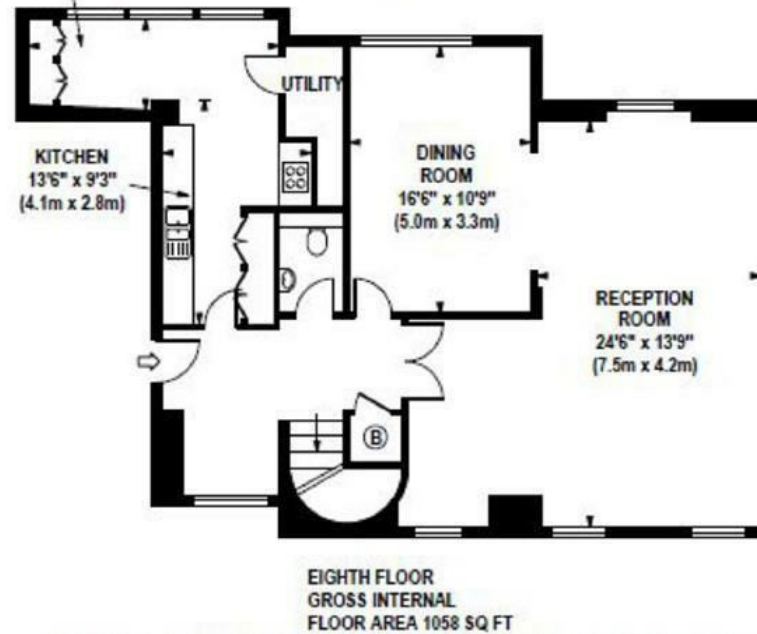
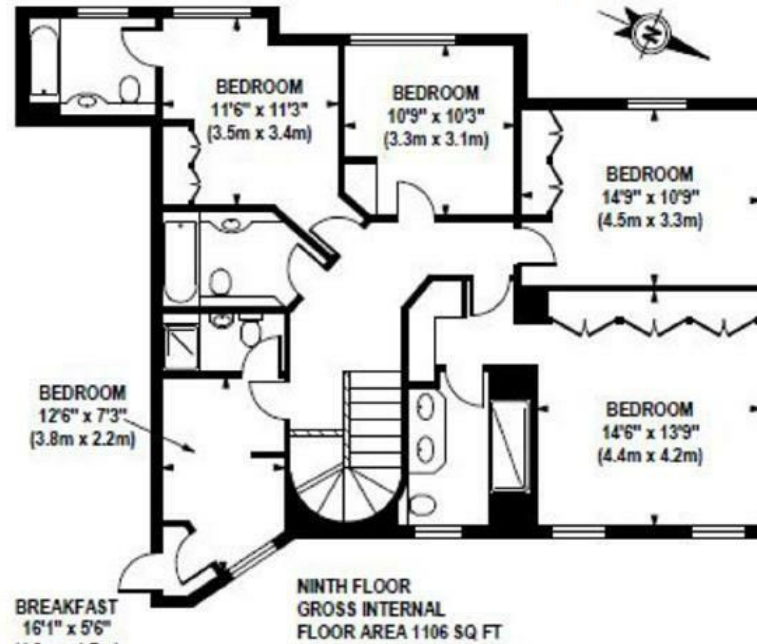






BOYDELL COURT

Approximate Gross Internal Area 2164 sq ft / 201.0 sq m



Although every attempt has been made to ensure accuracy, all measurements are approximate. The floor plan's for illustrative purposes only and not to scale. Measured in accordance to RICS standards.