

10, MARLBOROUGH HILL, ST JOHN'S WOOD NW8 0NN



10, MARLBOROUGH HILL, ST JOHN'S WOOD NW8 0NN

EXCLUSIVE. A stylish four bedroom family town house with open plan living areas providing an excellent St John's Wood home close to the American School and tube station.

Set mainly over three floors, the house comprises two reception rooms plus a further self contained home office / playroom in the basement. The principal bedroom includes plenty of storage and an en suite shower room and there are a further 3 bedrooms and 2 bathrooms on the top floor. Benefits include a sunny west facing garden. Marlborough Hill is located within a short walk of the American School. St John's Wood Jubilee Line tube station is approximately 0.3 miles away.

• 4 BEDROOMS • 3 BATHROOMS (2 EN SUITE) • GUEST CLOAKROOM • 2 RECEPTION ROOMS • OPEN PLAN KITCHEN • SELF CONTAINED OFFICE / PLAYROOM • WEST FACING PRIVATE GARDEN • WESTMINSTER COUNCIL TAX

EPC Rating: D Council Tax Band: H

£2,395 PER WEEK
UNFURNISHED

TENANTS FEES: As well as paying the rent, tenants may also be required to make the following permitted payments:

Holding Deposit (maximum of 1 week's rent)

Security Deposit equivalent to 5 or 6 weeks' rent (AST tenancies)

Utilities, Communications services charges including TV licence, and Council Tax

Misrepresentation Act 1967. This brochure and the descriptions and measurements herein do not constitute representation and whilst every effort has been made to ensure accuracy, this cannot be guaranteed.

ARLINGTON

RESIDENTIAL

020 7722 3322

arlingtonresidential.com



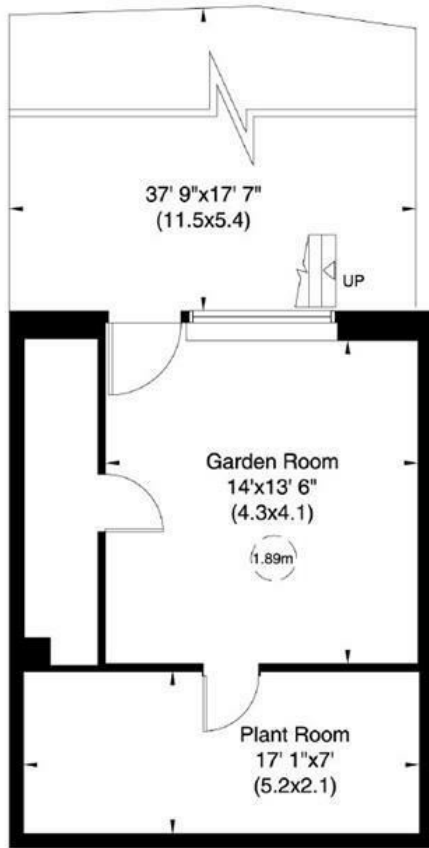




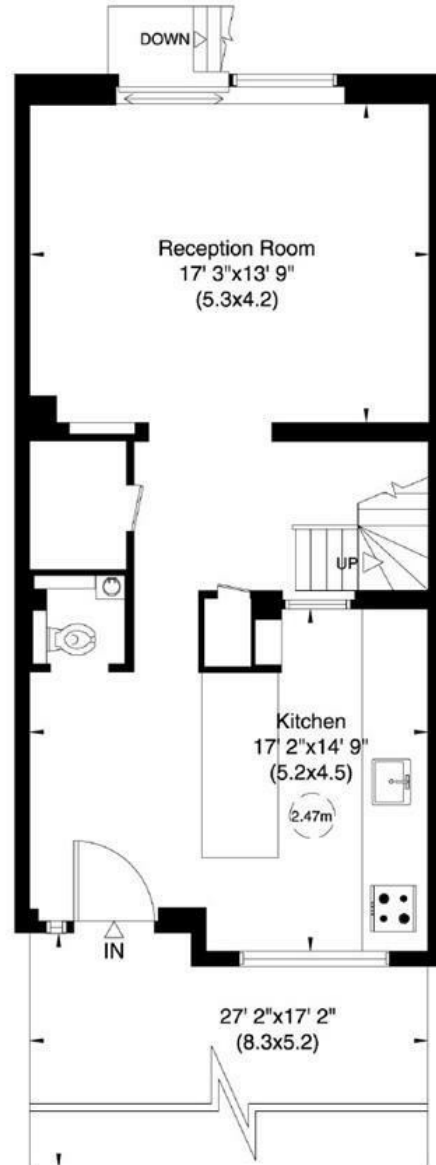
10 Marlborough Hill, NW8

Gross internal area (approx.)
211 Sq m (2270 Sq ft)

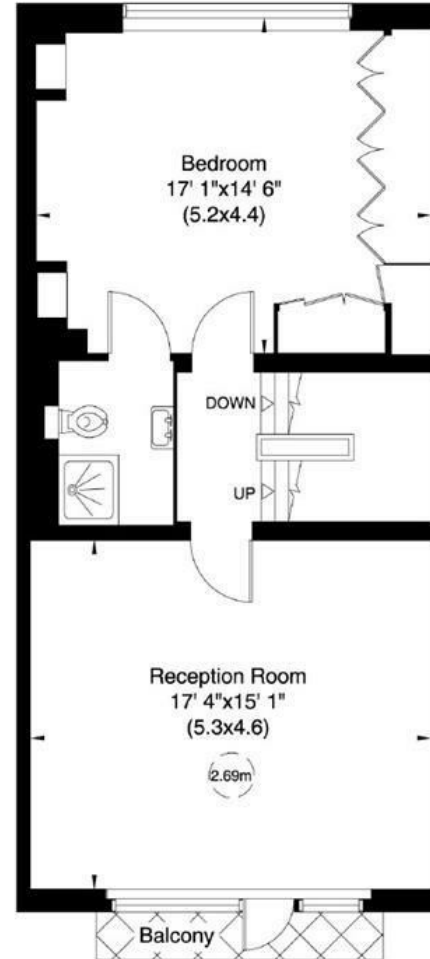
For identification only, Not to Scale



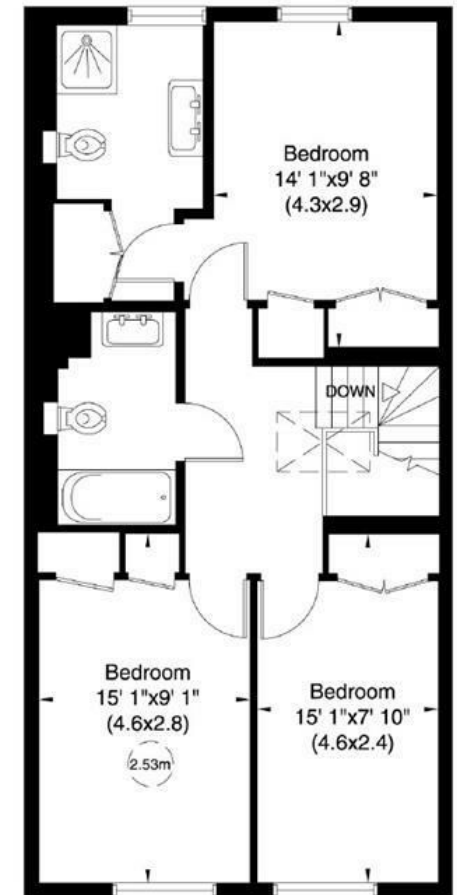
Lower Ground Floor



Ground Floor



First Floor



Second Floor