

WEYMOUTH MEWS, LONDON W1G 7EE



WEYMOUTH MEWS, LONDON W1G 7EE

Short Let Serviced Apartment. Located on the ground floor, this one bedroom flat opens into a spacious open plan kitchen, living area with views out over a planted courtyard. With wooden floors throughout and an exposed brick wall running the length of the area, the space has a modern industrial feel. Weymouth Mews is a cobbled street located between Regents Park and Oxford Circus and is within minutes of the West End's array of shopping, eating and entertainment amenities.

NOTE: There is no lift at Weymouth Mews. Rate is exclusive of VAT but includes dedicated concierge services and housekeeping, high-speed broadband, welcome provisions on arrival. Pets are welcome – T&Cs apply

- DOUBLE BEDROOM • BATHROOMS • OPEN PLAN KITCHEN • RECEPTION ROOM / DINING ROOM • DEDICATED CONCIERGE & HOUSEKEEPING SERVICE • UTILITIES, COUNCIL TAX, FAST SPEED WIFI INCLUDED IN RENT • PETS WELCOME (T&Cs APPLY)

EPC RATING B

£2,310 (FROM) PER WEEK
FURNISHED

TENANTS FEES: As well as paying the rent, tenants may also be required to make the following permitted payments:

Holding Deposit (maximum of 1 week's rent)

Security Deposit equivalent to 5 or 6 weeks' rent (AST tenancies)

Utilities, Communications services charges including TV licence, and Council Tax

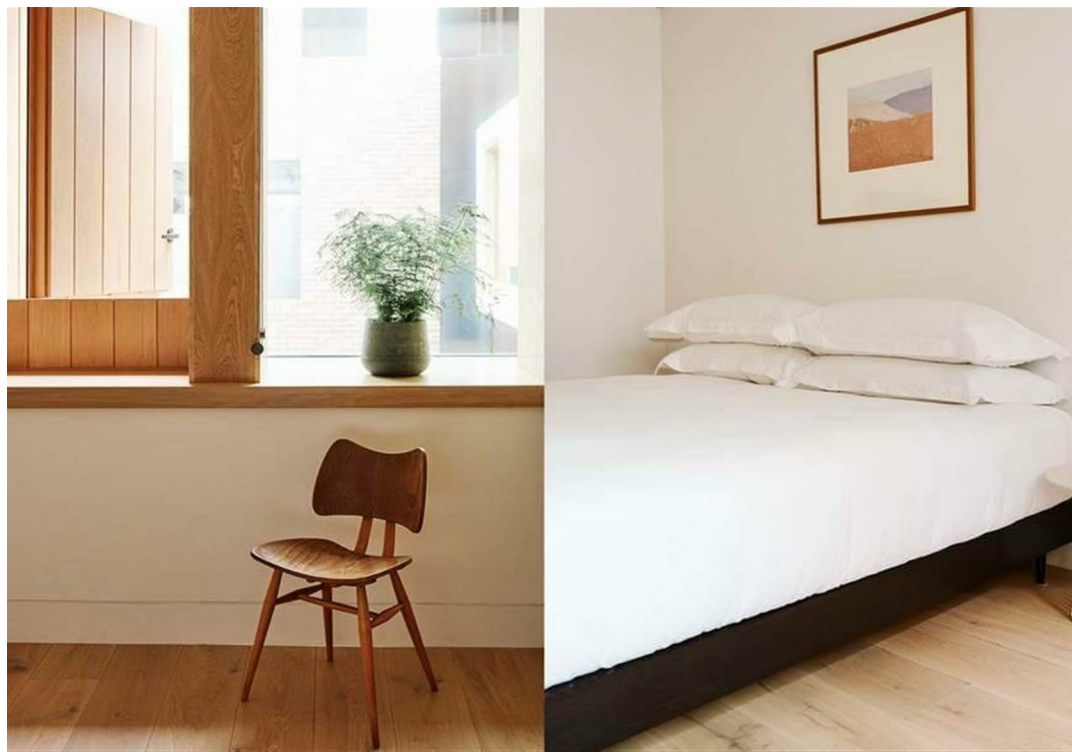
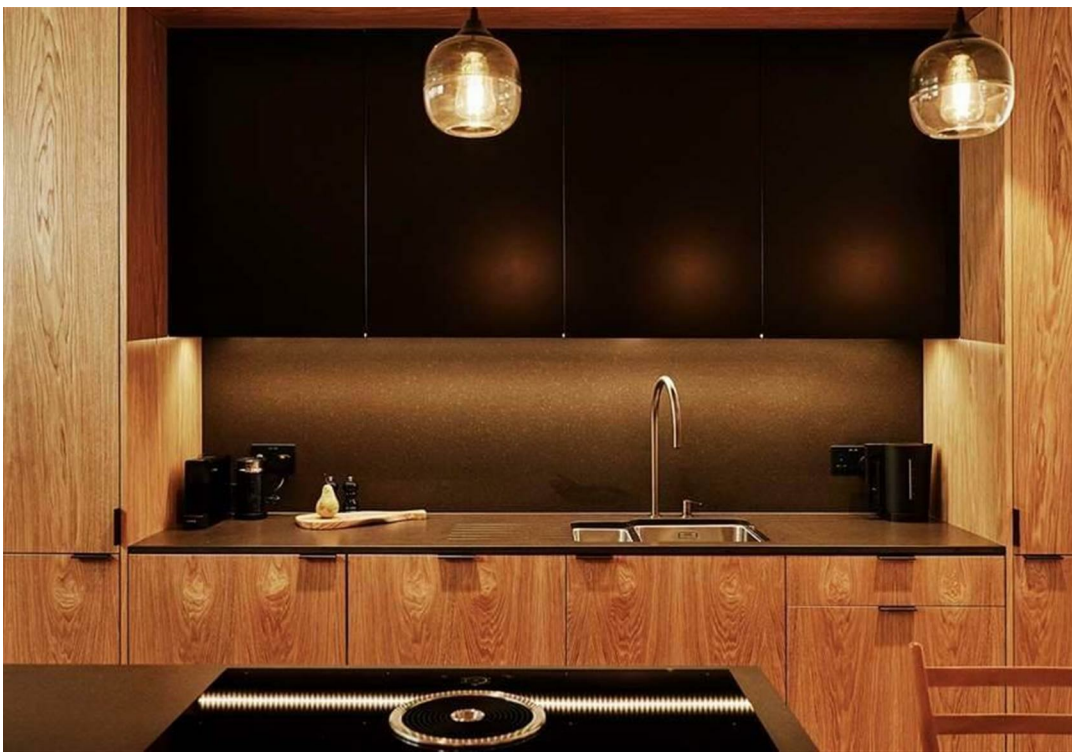
Misrepresentation Act 1967. This brochure and the descriptions and measurements herein do not constitute representation and whilst every effort has been made to ensure accuracy, this cannot be guaranteed.

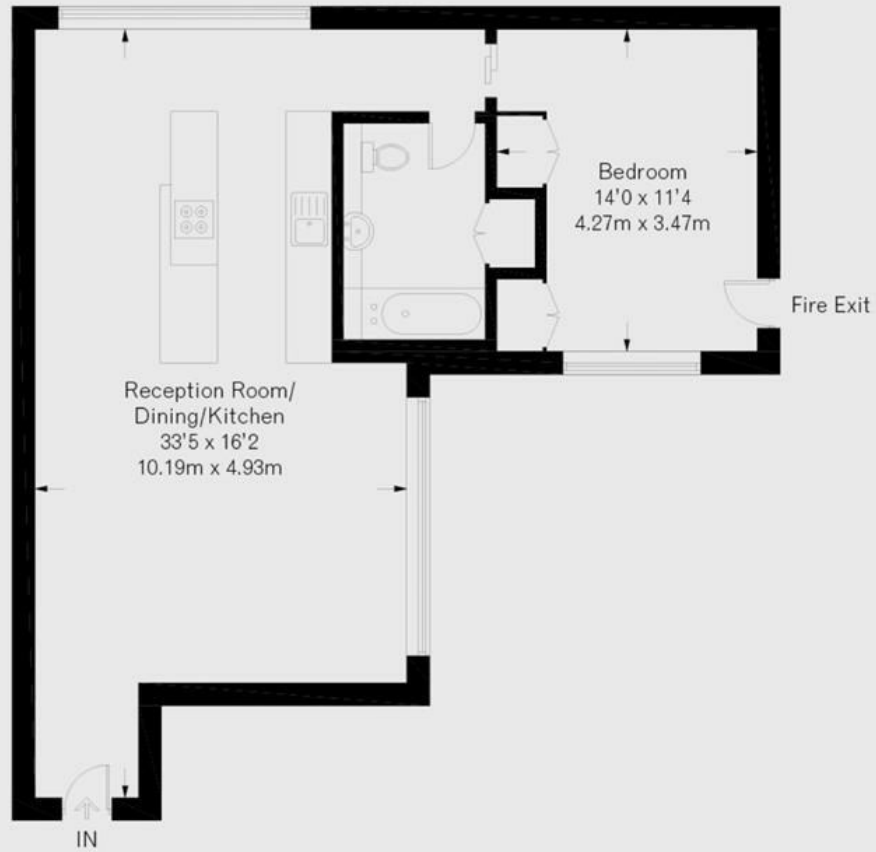
ARLINGTON

RESIDENTIAL

020 7722 3322

arlingtonresidential.com





APARTMENT TWO

GROUND FLOOR

698 SQ FT / 64.8 SQ M

Please note that this is a sample floorplan
and actual room layout may vary