



GARDEN FLAT, WEDDERBURN ROAD, LONDON, NW3

GARDEN FLAT, WEDDERBURN ROAD, LONDON, NW3

Rarely does such a stunning and painstakingly refurbished period property come to the market. This superb Victorian era home of approximately 3,672 sq ft has had no expense spared in its remodelling, including ornate plasterwork, statement wood flooring, crystal chandeliers and floor to ceiling marble bathrooms. With its own private entrance and set primarily on the raised ground of a red brick mansion, this one-off apartment provides grandiose reception areas, exceptionally spacious bedrooms (all en suite), luxury contemporary kitchen/dining room, a private garden and a lock up garage as well as off street parking.

Wedderburn Road is located within a short walk of Hampstead's village centre and the Northern Line tube station.

ACCOMMODATION AND AMENITIES:

LARGE RECEPTION ROOM, DINING ROOM, SEPARATE FITTED KITCHEN WITH BREAKFAST ROOM, PRINCIPAL BEDROOM WITH ENSUITE BATHROOM, 3 FURTHER BEDROOMS WITH ENSUITE BATHROOMS/SHOWER ROOMS, PARQUET FLOORING, MARBLE BATHROOMS, SOUTH FACING GARDEN, GARAGE, OFF-STREET PARKING.

RENTAL PRICE: £2,800 per week
UNFURNISHED

SOLE AGENTS





CA-H

431
Blue circle with red border
No parking
8.30 am - 6.30 pm
Monday - Friday

AKENSIDE R. N.W.3



















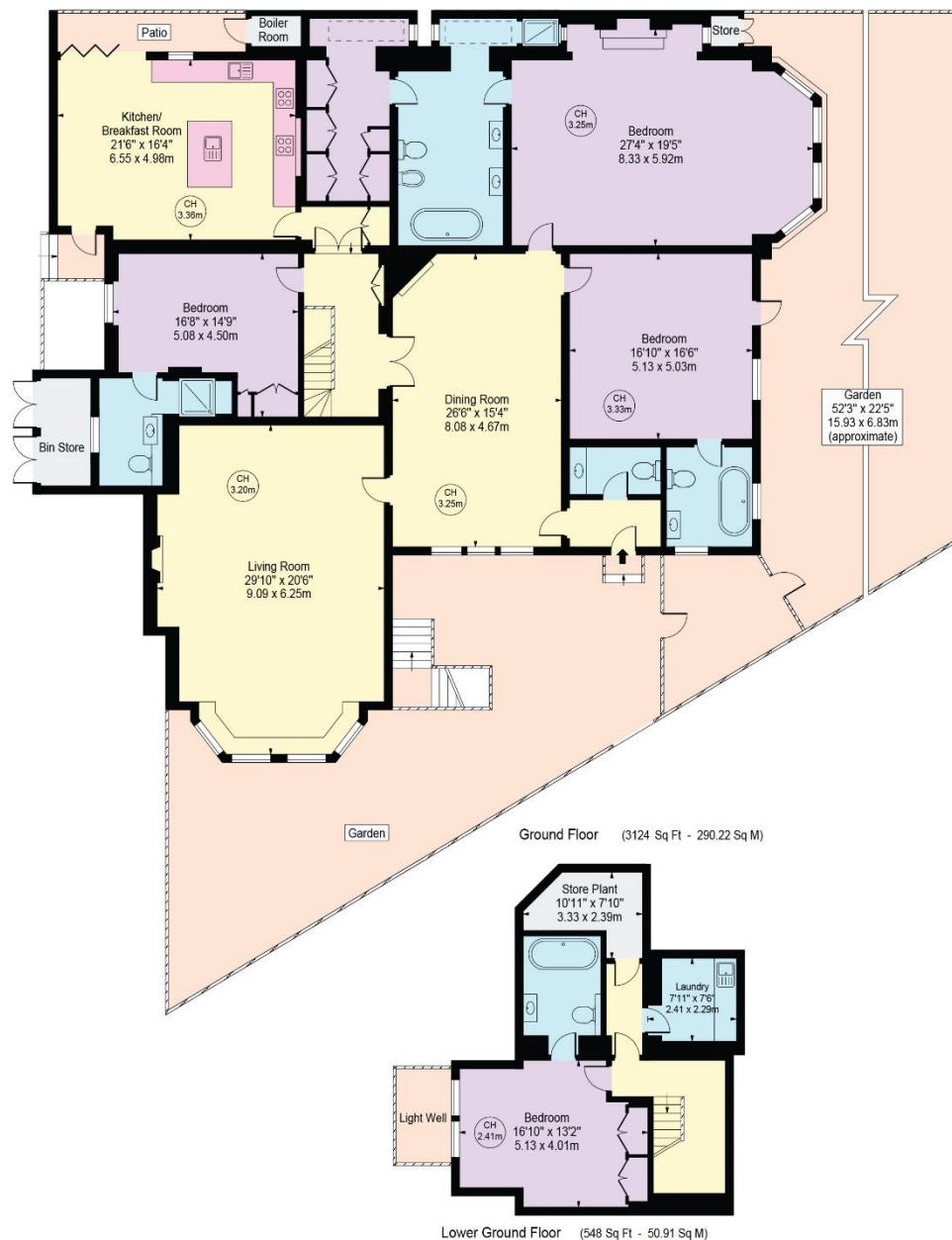


Wedderburn Road

Approx. Gross Internal Area 3672 Sq Ft - 341.14 Sq M

(Excluding Store, Bin Store & Boiler Room)

Approx. External Area Of Garden 2200 Sq Ft - 204.38 Sq M



For Illustration Purposes Only - Not To Scale

This floor plan should be used as a general outline for guidance only and does not constitute in whole or in part an offer or contract. Any intending purchaser or lessee should satisfy themselves by inspection, searches, enquiries and full survey as to the correctness of each statement. Any areas, measurements or distances quoted are approximate and should not be used to value a property or be the basis of any sale or let.