



Dungates Lane, Buckland, Betchworth, Surrey, RH3 7BB

£2,200 PCM



- AVAILABLE EARLY JULY 2025
- THREE BEDROOM CHARACTER COTTAGE
- DINING ROOM WITH ACCESS TO REAR CONSERVATORY
- KITCHEN AND BATHROOM
- BELIEVED TO BE DATED BACK TO 1500's
- UNFURNISHED
- RECEPTION ROOM WITH WORKING FIREPLACE
- VILLAGE LOCATION
- GOOD SIZE REAR GARDEN AND GARAGE

Description

RECEPTION ROOM 1

Working inglenook fireplace.

KITCHEN

Modern fitted units with integrated appliances, fridge/freezer, dishwasher, electric cooker, washing machine.

RECEPTION ROOM 2

Doors to conservatory, windows looking over the garden.

CONSERVATORY

Part brick built structure with door to rear garden.

GARDEN

Well kept private rear garden with lawn and flower beds, patio area, driveway for several cars and double garage.

STAIRS TO FIRST FLOOR LANDING

Built in storage.

BEDROOM 1

Decorative fireplace.

BEDROOM 2

Decorative fireplace and fitted wardrobes.

BEDROOM 3

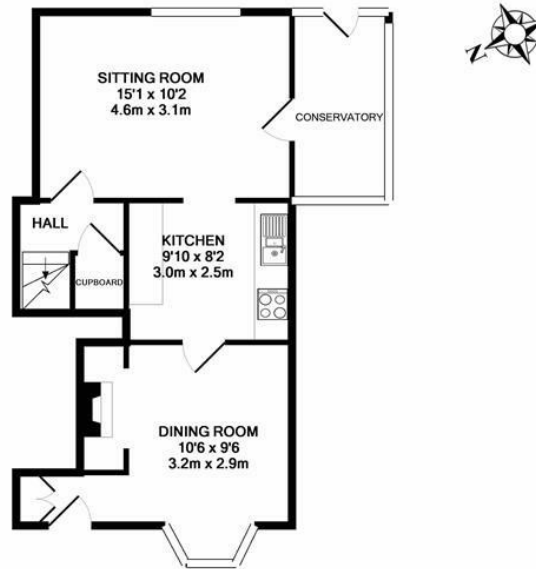
EPC

D

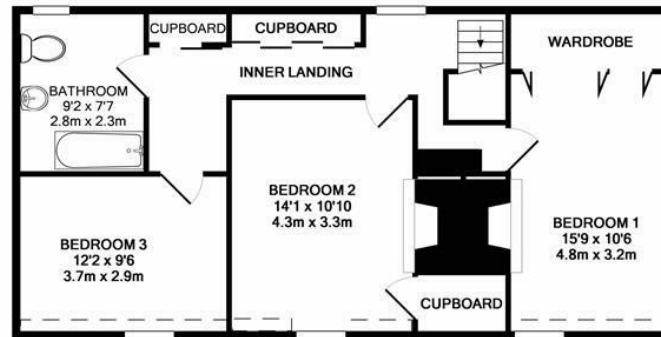
Council Tax Band

D





GROUND FLOOR
APPROX. FLOOR
AREA 512 SQ. FT.
(47.6 SQ. M.)



1ST FLOOR
APPROX. FLOOR
AREA 739 SQ. FT.
(68.7 SQ. M.)

TOTAL APPROX. FLOOR AREA 1251 SQ. FT. (116.2 SQ. M.)

Whilst every attempt has been made to ensure the accuracy of the floor plan contained here, measurements of doors, windows, rooms and any other items are approximate and no responsibility is taken for any error, omission, or mis-statement. This plan is for illustrative purposes only and should be used as such by any prospective purchaser. The services, systems and appliances shown have not been tested and no guarantee as to their operability or efficiency can be given.
Made with Metropix ©2019

171 High Street, Dorking, Surrey, RH4 1AD
Tel: 01306 877618 Email: dorkinglettings@patrickgardner.com
<https://www.patrickgardner.com/>

These particulars, whilst believed to be accurate are set out as a general outline only for guidance and do not constitute any part of an offer or contract. Intending purchasers should not rely on them as statements of representation of fact, but must satisfy themselves by inspection or otherwise as to their accuracy. No person in this firm's employment has the authority to make or give any representation or warranty in respect of the property.