



Willowmead, Dorking, RH4 1UE

£1,100 PCM





- AVAILABLE MID JULY 2025
- ONE DOUBLE BEDROOM
- MODERN BATHROOM
- TOWN CENTRE LOCATION
- ELECTRIC HEATING
- UNFURNISHED
- GROUND FLOOR
- CLOSE TO MEADOWBANK
- ALLOCATED PARKING SPACE

## Description

ENTRANCE HALL

KITCHEN

Range of wall and base units, including white goods.

BATHROOM

Modern white suite with wc, wash hand basin and bath with shower over. storage cupboard with water tank.

BEDROOM

Generous room with fitted wardrobe and rear view.

LIVING ROOM

Large with space for dining table and chairs and rear view.

EPC

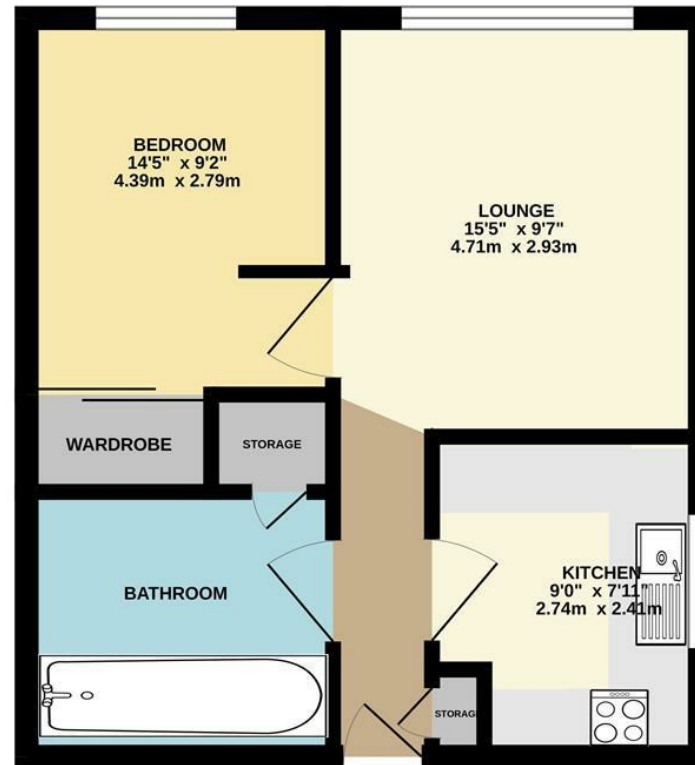
Council Tax Band

D

C



## GROUND FLOOR



Whilst every attempt has been made to ensure the accuracy of the floorplan contained here, measurements of doors, windows, rooms and any other items are approximate and no responsibility is taken for any error, omission or mis-statement. This plan is for illustrative purposes only and should be used as such by any prospective purchaser. The services, systems and appliances shown have not been tested and no guarantee as to their operability or efficiency can be given.  
Made with Metropix ©2023

171 High Street, Dorking, Surrey, RH4 1AD  
**Tel:** 01306 877618 **Email:** [dorkinglettings@patrickgardner.com](mailto:dorkinglettings@patrickgardner.com)  
<https://www.patrickgardner.com/>

These particulars, whilst believed to be accurate are set out as a general outline only for guidance and do not constitute any part of an offer or contract. Intending purchasers should not rely on them as statements of representation of fact, but must satisfy themselves by inspection or otherwise as to their accuracy. No person in this firm's employment has the authority to make or give any representation or warranty in respect of the property.