



Coldharbour Lane, Dorking, RH4 3JH

£3,200 PCM



- AVAILABLE MARCH 2025
- UTILITY ROOM
- THREE BATHROOMS
- LARGE DOUBLE GARAGE
- PART/UNFURNISHED
- SUBSTANTIAL THREE BEDROOM COUNTRY HOME
- TWO RECEPTION ROOMS
- RURAL SETTING

Description

ENTRANCE PORCH: Front door leading into a spacious entrance hall with integrated storage and ground floor cloakroom w/c.

LOUNGE: Bright and spacious double aspect living space with high ceilings and character features, wood burning stove and outlook to the front and side gardens.

DINING ROOM: Good size dining room with double doors to front garden, integrated alcove storage.

KITCHEN/BREAKFAST ROOM: Large double aspect kitchen breakfast room with plenty of space for a table, ample worktop space and cupboard storage, fridge and range style cooker.

UTILITY ROOM: Spacious utility room with ample extra storage, washing machine, tumble dryer, sink and access to rear courtyard. Door leading to rear of double garage.

STUDY: Ground floor study with shelving.

DOUBLE GARAGE: Large double garage with two up and over doors.

MASTER BEDROOM: Large double bedroom with rail hanging space and en-suite bathroom.

ENSUITE: Featuring a shower over the bath, corner sink unit, heated towel rail and far reaching countryside views.

BEDROOM TWO: Large double aspect bedroom with a bright and spacious feel.

FAMILY BATHROOM: Integrated toilet and sink unit, bath, walk in corner shower and towel rail.

BEDROOM THREE: Double bedroom with integrated cupboard storage, views to the front fields.

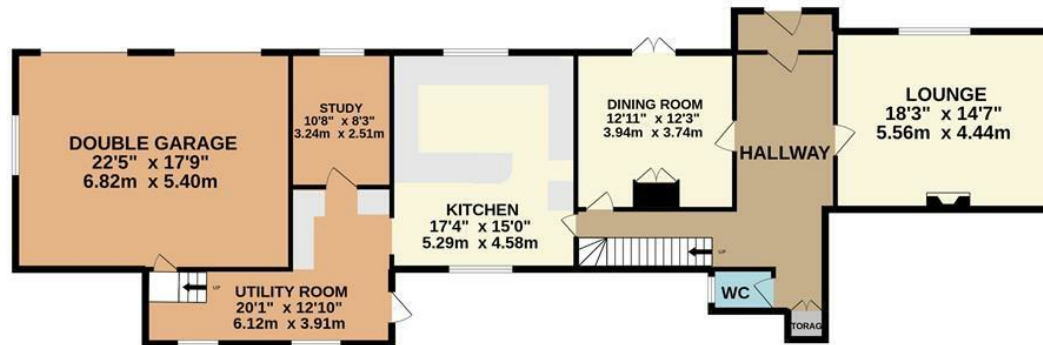
BATHROOM: Roll top bath, fitted sink unit with marble top, toilet with high level cistern.

OUTSIDE: Garden to the side of the property with lawn and mature flowerbeds, front courtyard and large driveway.

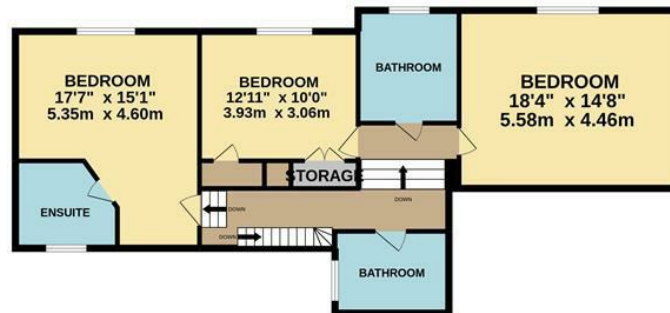
EPC E
Council Tax Band G



GROUND FLOOR



1ST FLOOR



Whilst every attempt has been made to ensure the accuracy of the floorplan contained here, measurements of doors, windows, rooms and any other items are approximate and no responsibility is taken for any error, omission or mis-statement. This plan is for illustrative purposes only and should be used as such by any prospective purchaser. The services, systems and appliances shown have not been tested and no guarantee as to their operability or efficiency can be given.
Made with Metropix ©2022

171 High Street, Dorking, Surrey, RH4 1AD
Tel: 01306 877618 **Email:** dorkinglettings@patrickgardner.com
<https://www.patrickgardner.com/>

These particulars, whilst believed to be accurate are set out as a general outline only for guidance and do not constitute any part of an offer or contract. Intending purchasers should not rely on them as statements of representation of fact, but must satisfy themselves by inspection or otherwise as to their accuracy. No person in this firm's employment has the authority to make or give any representation or warranty in respect of the property.