



SOUTH HILL PARK,
HAMPSTEAD HEATH, NW3



A well-presented, 5 bedroom semi-detached Victorian family house that extends to approximately 3,750 sq ft, located on this highly sought after, quiet residential crescent affording fantastic views over and having direct access onto Hampstead Heath.

This wonderful property has been extended and totally refurbished throughout by the current owners for their own occupation over the last 8 years and offers generous, bright and well-proportioned accommodation over five floors.

The house benefits from having an absolutely gorgeous, secluded 60' paved dining terrace and garden which has direct access out onto the rolling acres of Hampstead Heath.

GUIDE PRICE £6,250,000

SOLE AGENT

FREEHOLD

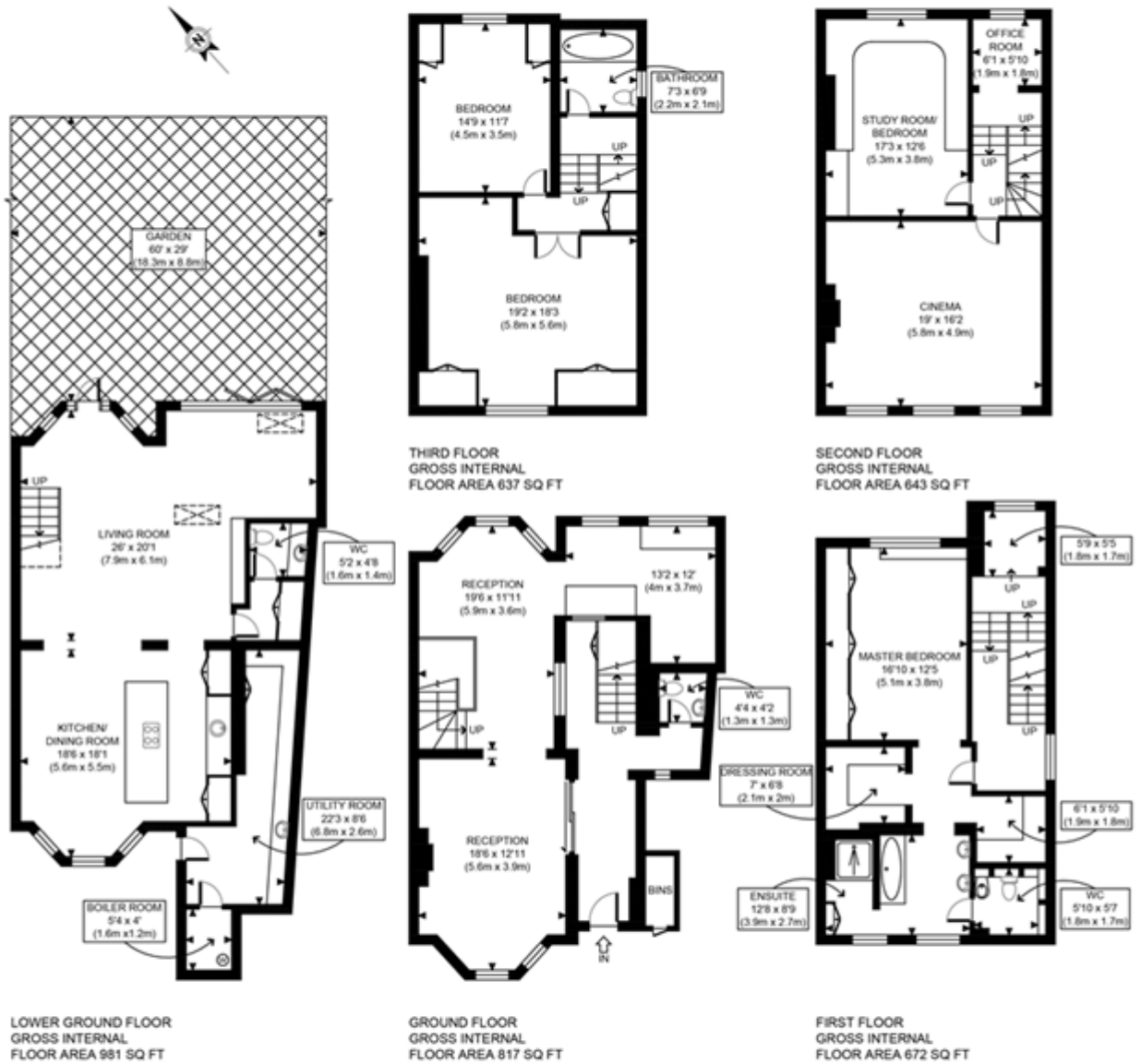
ACCOMMODATION & AMENITIES

ENTRANCE HALL, COATS CUPBOARD, GUEST WC, DRAWING ROOM, MUSIC ROOM, STUDY AREA, OPEN PLAN KITCHEN/FAMILY/DINING/GARDEN ROOM, GUEST WC, UTILITY ROOM, MASTER BEDROOM WITH EN SUITE BATHROOM AND TWO DRESSING ROOMS, THREE FURTHER BEDROOMS, CINEMA ROOM/BEDROOM 5, OFFICE, WESTERLEY FACING GARDEN WITH DIRECT ACCESS TO HAMPSTEAD HEATH, SEPARATE ENTRANCE









APPROX. GROSS INTERNAL FLOOR AREA 3750 SQ FT / 348 SQM		South Hill Park NW3
Disclaimer: Floor plan measurements are approximate and are for illustrative purposes only. While we do not doubt the floor plan accuracy and completeness, you or your advisors should conduct a careful, independent investigation of the property in respect of monetary valuation		date 04/06/20
		photoplan



