



THE HOUSE
LISSENDEN GARDENS NW5

THE HOUSE

LISSENDEN GARDENS NW5

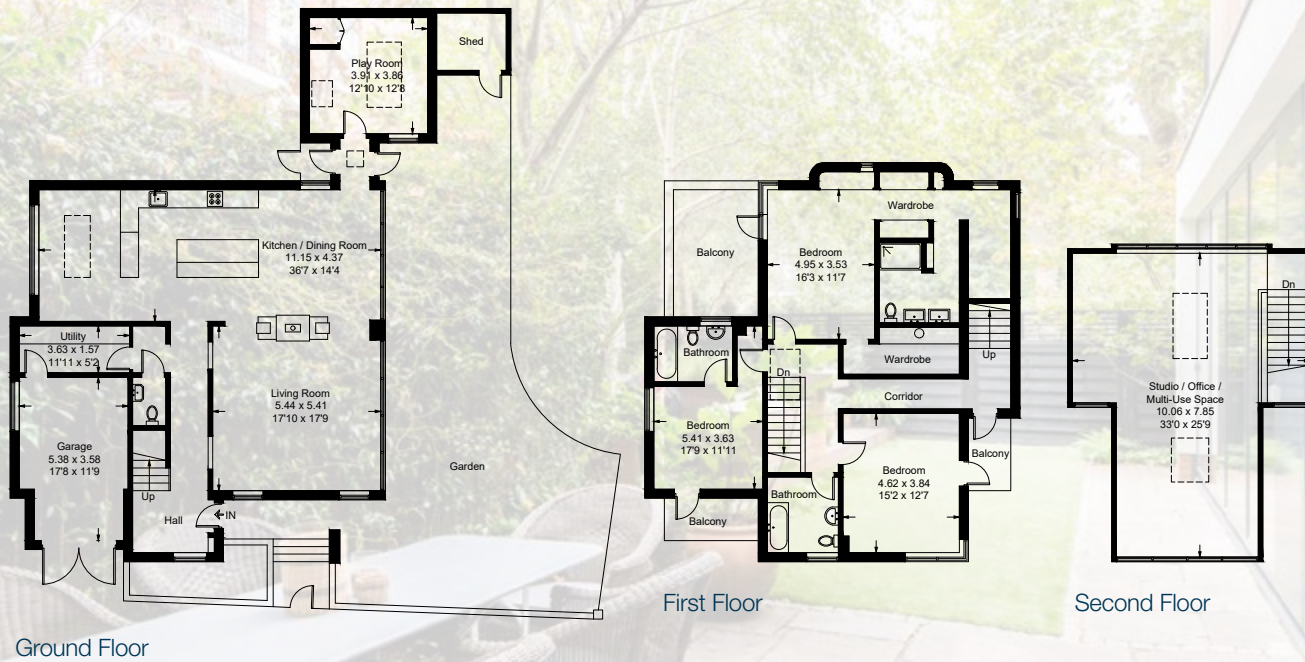
AN IMMACULATE, ARCHITECT DESIGNED 3404 SQ FT 4/5 BEDROOM DETACHED FAMILY HOUSE LOCATED ON A QUIET ENCLAVE ON THE EDGE OF HAMPSTEAD HEATH OVERLOOKING A COMMUNAL TENNIS COURT TO THE FRONT AND OVER SCHOOL FIELDS AND KITE HILL ON HAMPSTEAD HEATH BEHIND.

This fantastic property was painstakingly crafted, built and interior designed by the current owners over the last 10 years originally as a two storey house, but has recently been extended with a huge top floor studio/workplace that could easily be altered to create an exceptional Master suite or alternatively two additional bedrooms and a bathroom. The house offers a calm flow of practical spacious accommodation with numerous outside areas including balconies, terraces, a good size garden with a decked chill out seating arrangement and a secluded outside dining area and also has an integral garage. To the side of the house there is access onto the Heath, The Lido and Parliament Hill running track as well as many local shops, gastro pubs, restaurants and numerous schools.





APPROXIMATE GROSS INTERNAL AREA
316.2 SQ_M (3,404 SQ_FT)



ACCOMMODATION & AMENITIES

Entrance Hall • Lounge • Dining Room •
Kitchen/Family Room • Study/Playroom • Utility Room •
Cloakroom • Master Bedroom with En-Suite Dressing Rooms
and Luxurious Bathroom • Two Further Bedrooms (One En-
Suite) • Family Bathroom • Top Floor Studio Room (could be
two further bedrooms) • Garden • Garage • Residents Parking

PRICE ON APPLICATION

SUBJECT TO CONTRACT

FREEHOLD

SOLE AGENT

**MARCUS
PARFITT**

RESIDENTIAL SALES & ACQUISITIONS

020 7431 0000

28 Church Row, Hampstead, London NW3 6UP
email: info@marcusparfitt.com www.marcusparfitt.com

Brochure by
CAKTUS

OnTheMarket.com

Misrepresentation Act 1967. This brochure and the descriptions and measurements herein do not constitute representation and whilst every effort has been made to ensure accuracy, this cannot be guaranteed.