



THE GROVE

HIGHGATE, N6

THE GROVE

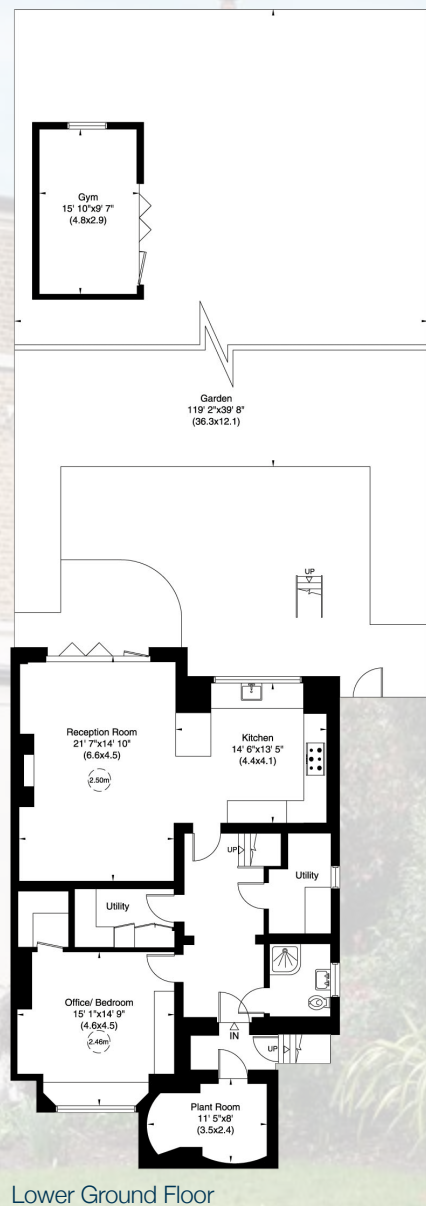
HIGHGATE, N6

Situated in what is considered to be Highgate's finest road within a short walk from The Village and close to The Heath is this imposing six/seven bedroom semi detached Grade II Listed Victorian house arranged over four floors. This fine home, retaining numerous original features, is set back behind a driveway which provides off street parking for two/three cars and is complimented by a stunning garden of approximately 120ft in length.

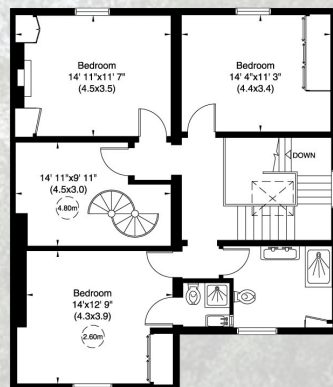




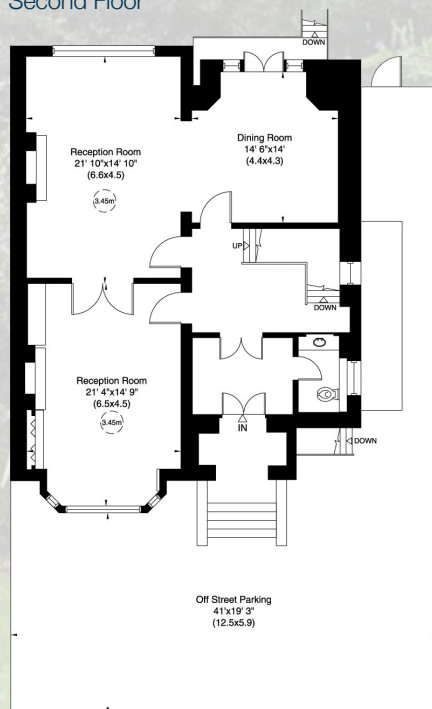
APPROXIMATE GROSS INTERNAL AREA
444 SQ.M (4,777 SQ.FT)
INCLUDING UNDER EAVES, UNDER 1.5M, GYM AND PLANT ROOM
399 SQ.M (4,299 SQ.FT)
EXCLUDING UNDER EAVES, UNDER 1.5M, GYM AND PLANT ROOM



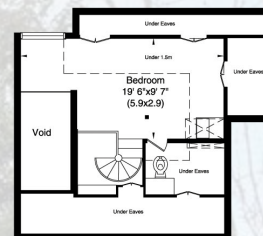
Lower Ground Floor



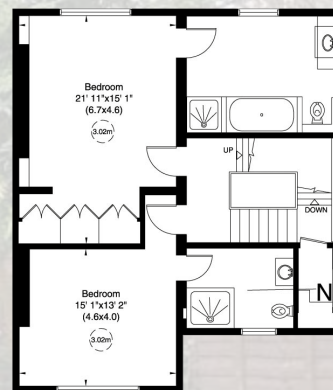
Second Floor



Raised Ground Floor



Third Floor



First Floor

ACCOMMODATION & AMENITIES

VESTIBULE • ENTRANCE HALL • GUEST CLOAKROOM
DRAWING ROOM INTERCOMMUNICATING WITH
RECEPTION TWO • DINING ROOM • FAMILY ROOM
KITCHEN/BREAKFAST ROOM • UTILITY ROOM • OFFICE/
BEDROOM • PRINCIPAL SUITE COMPRISING: BEDROOM,
DRESSING AREA & EN SUITE TWO FURTHER SUITES • TWO
FURTHER BEDROOMS FAMILY BATHROOM • TEENAGER/
GUEST SUITE WITH SITTING GAMING AREA AND LOFT
BEDROOM WITH W/C • 120FT REAR GARDEN WITH A
DETACHED GYM/STUDIO • OFF STREET PARKING
FOR 2/3 CARS.

PRICE ON APPLICATION

FREEHOLD

SOLE SELLING AGENTS

**MARCUS
PARFITT**

RESIDENTIAL SALES & ACQUISITIONS

020 7431 0000

28 Church Row, Hampstead, London NW3 6UP
email: info@marcusparfitt.com www.marcusparfitt.com

