



DENNING ROAD **HAMPSTEAD VILLAGE, NW3**



A pretty four/five bedroom mid-terrace Victorian house in immaculate condition, arranged over only four floors, comprising approximately 2515 square feet (233 square metres) with the benefit of a beautifully designed, larger than average, rear garden.

The house is located in enviable position in a quiet street, between Willow and Carlingford Road's, in the heart of Hampstead Village, moments from both the High Street and the expansive open space of Hampstead Heath, and the abundant boutiques and shops, extensive transport links and many of the key local schools.

ACCOMMODATION & AMENITIES

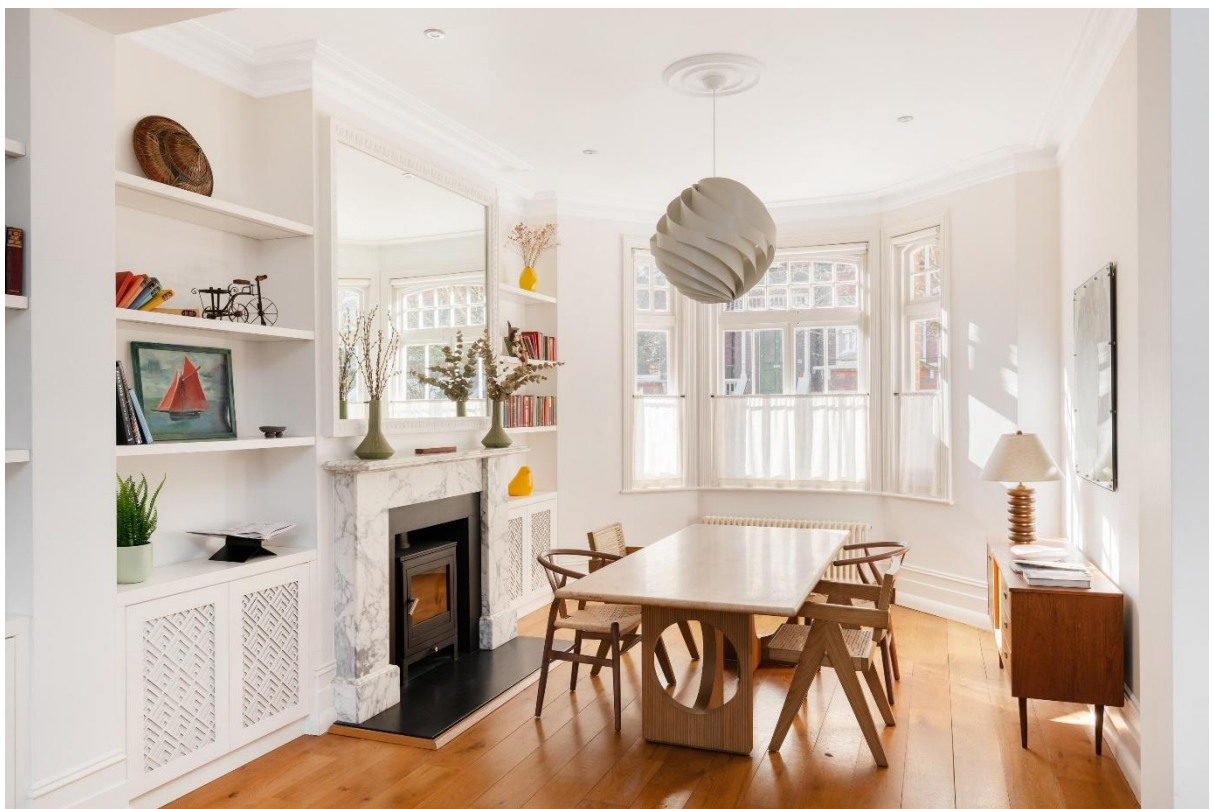
• ENTRANCE HALL • DOUBLE RECEPTION ROOM • OPEN-PLAN KITCHEN AND DINING ROOM • GUEST WC •
• FAMILY ROOM • PRINCIPAL BEDROOM SUITE • THREE FURTHER BEDROOMS • FAMILY BATHROOM •
STUDY/BEDROOM FIVE • UTILITY ROOM • PRIVATE GARDEN • SEPARATE GARDEN LEVEL ENTRANCE • • REAR
GARDEN • EER 64D • LONDON BOROUGH OF CAMDEN COUNCIL TAX BAND H •

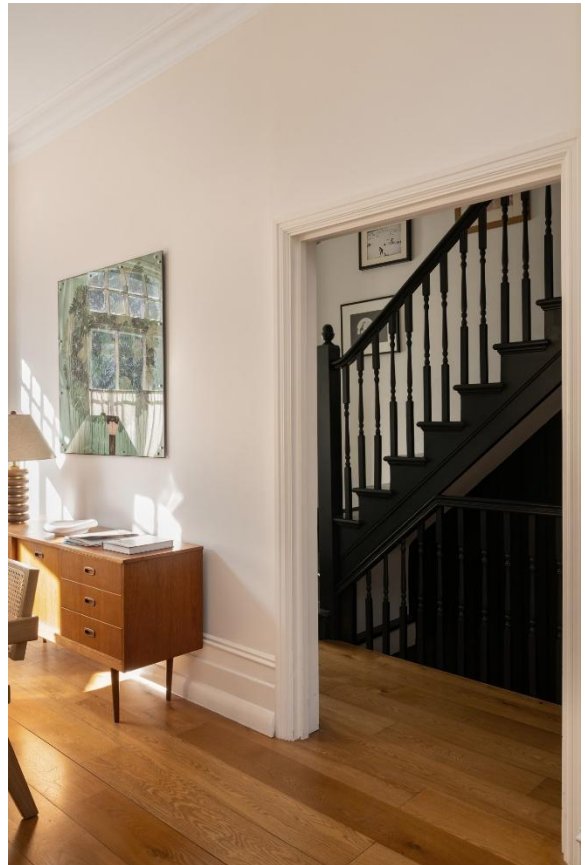
GUIDE PRICE £4,850,000

SOLE AGENT

FREEHOLD







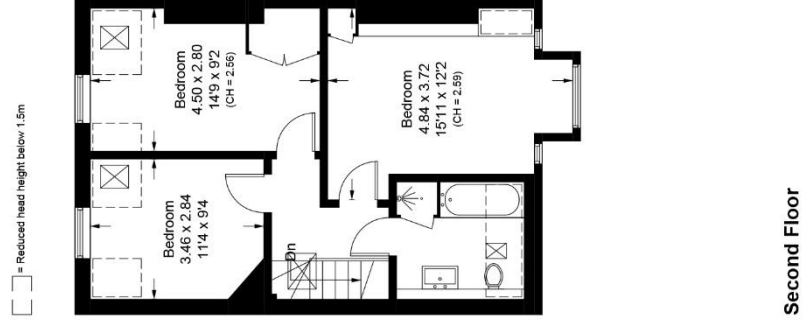
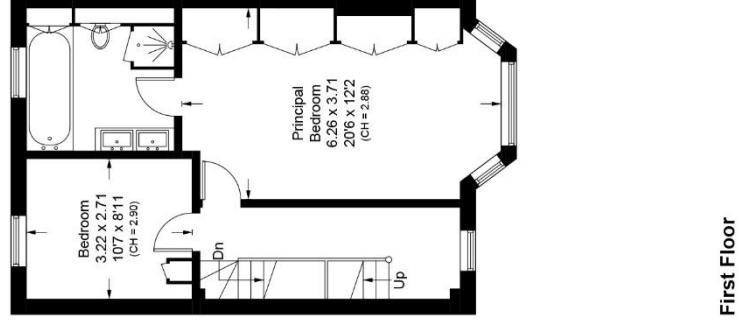
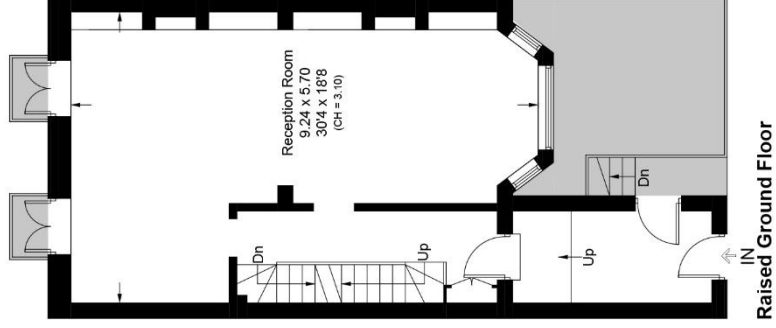
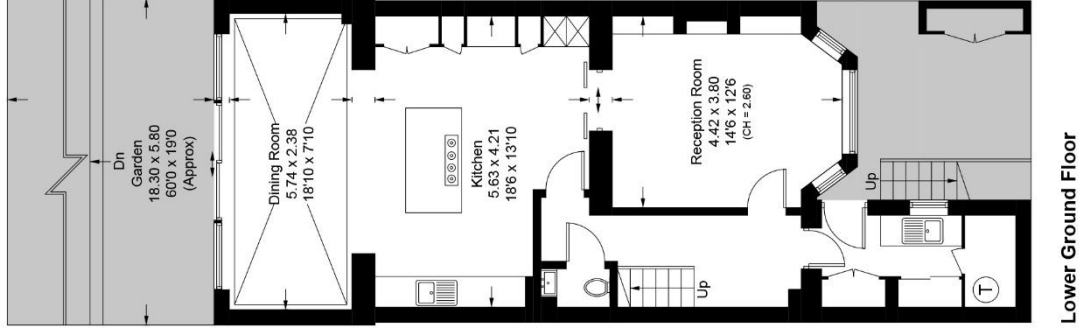






Denning Road, NW3

Approximate Area = 233.7 sq m / 2515 sq ft
Including Limited Use Area (6.7 sq m / 72 sq ft)
(Excluding External Store)



Surveyed and drawn in accordance with the International property measurements standards (IPMS 2: Residential) Not drawn to scale unless stated.
Whilst every care is taken in the preparation of this plan, please check all dimensions, shapes and compass bearings before making any decisions reliant upon them.







