



THE GROVE

HIGHGATE, N6



THE GROVE HIGHGATE, N6

Byron Villa is a stunning townhouse built by Octagon Developments in 2015 and is perfectly placed for Highgate Village which is lined with independent shops and cafes as well as many local schools.

This wonderful property is designed to the highest specification and finish, the property offers spacious accommodation extending to almost 6200 sq ft (574 sq mts) On the raised ground floor, off the elegant marble tiled entrance hall there is the formal drawing room with 3 pairs of french doors opening onto a balustraded upper terrace, as well as a study and guest cloakroom/W.C. On the upper

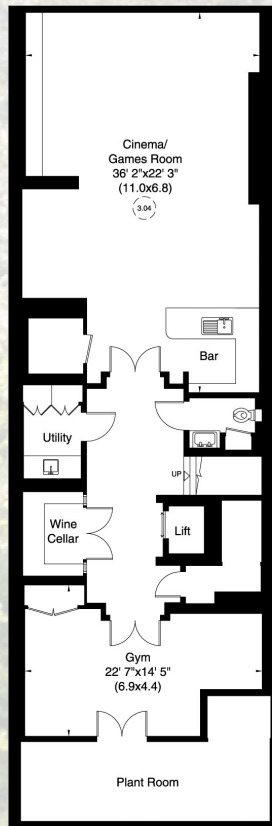
floors, which are served but a contemporary glass lift there are five double bedrooms, five bathrooms and two dressing rooms, with the principal suite taking up the entire first floor. The garden level is ideal for open plan family living with the kitchen that is fitted with modern lacquered units and integrated appliances – with a large granite topped island breakfast bar, a formal dining area adjoins with an informal sitting room with 3 pairs of french doors, opening onto the wide paved terrace and flight of stone steps leading to the tastefully landscaped and planted rear gardens that extends to over 100'. The lower ground floor has a large cinema/entertainments room with a bar, gym and wine cellar. Finally the house benefits from having a self contained studio apartment with its own private entrance and off street parking for several vehicles.



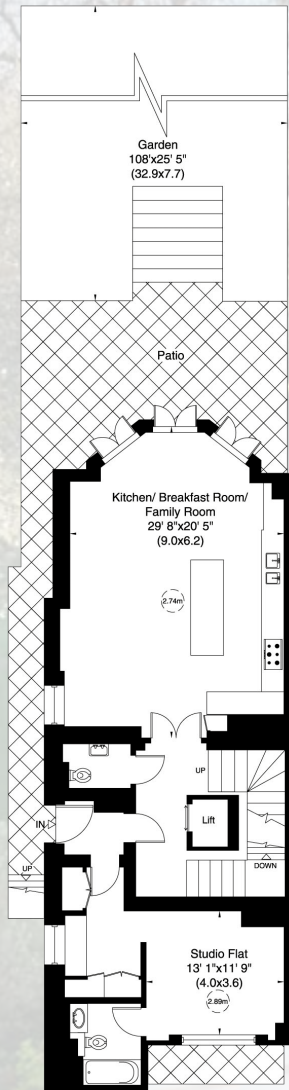
APPROXIMATE GROSS INTERNAL AREA

574 SQ_M (6,183 SQ_FT)
INCLUDING UNDER EAVES

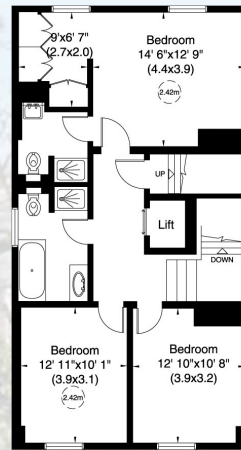
567 SQ_M (6,107 SQ_FT)
EXCLUDING UNDER EAVES



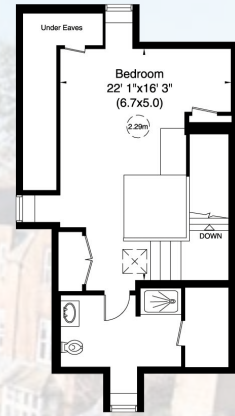
Basement



Lower Ground Floor



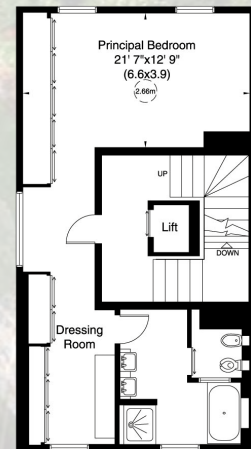
Second Floor



Third Floor



Raised Ground Floor



First Floor



Misrepresentation Act 1967. This brochure and the descriptions and measurements herein do not constitute representation and whilst every effort has been made to ensure accuracy, this cannot be guaranteed.



RESIDENTIAL SALES & ACQUISITIONS

020 7431 0000

28 Church Row, Hampstead, London NW3 6UP
email: info@marcusparfitt.com www.marcusparfitt.com

ACCOMMODATION & AMENITIES

RECEPTION HALL • DRAWING ROOM • STUDY
KITCHEN/DINING/FAMILY ROOM • PRINCIPAL
BEDROOM WITH EN SUITE DRESSING ROOM
AND BATHROOM • 4 FURTHER BEDROOMS
3 FURTHER BATHROOMS (2 EN-SUITE)
3 GUEST CLOAKROOMS • CINEMA/GAMES
ROOM/BAR • UTILITY ROOM • GYMNASIUM
WINE CELLAR • LIFT • 108' WEST FACING
REAR GARDEN • OFF STREET PARKING.

PRICE ON APPLICATION
FREEHOLD
SOLE SELLING AGENTS

