



HAMPSTEAD VILLAGE

NW3



HAMPSTEAD VILLAGE

NW3

A beautiful Grade II* Listed Georgian house. This wonderful property is presented in immaculate condition throughout and is located in the heart of the Village between the High Street and Hampstead Heath.



APPROXIMATE GROSS INTERNAL AREA

211.6 SQ_M (2,278 SQ_FT)

STORE 1.5 SQ_M (16 SQ_FT)

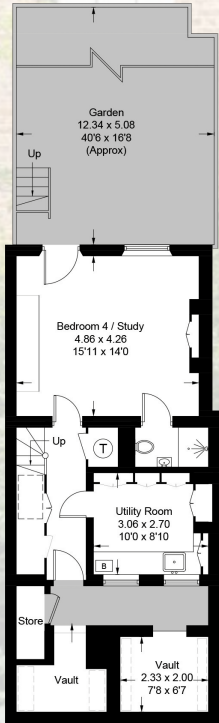
VAULTS 9.7 SQ_M (104 SQ_FT)

TOTAL 222.8 SQ_M (2,398 SQ_FT)

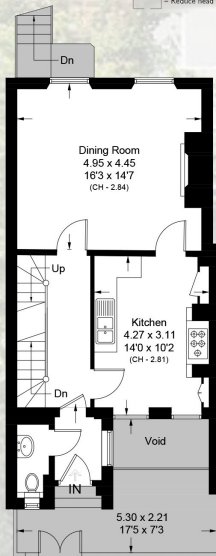
INCLUDING LIMITED USE AREA 6.1 SQ_M (66 SQ_FT)



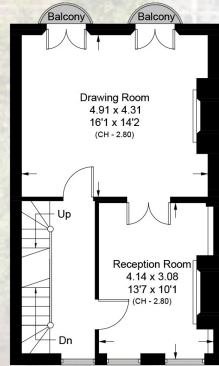
☐ = Reduce head height below 1.5m



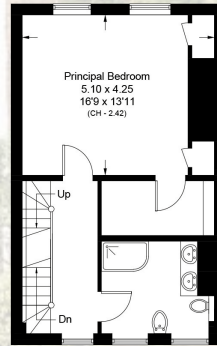
Lower Ground Floor



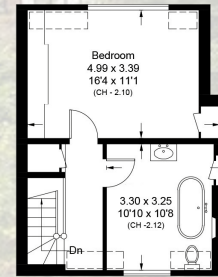
Ground Floor



First Floor



Second Floor



Third Floor

ACCOMMODATION & AMENITIES

- ENTRANCE VESTIBULE • GUEST CLOAKROOM • ENTRANCE HALL • DINING ROOM • FITTED KITCHEN • DRAWING ROOM • STUDY • PRINCIPLE BEDROOM WITH EN SUITE DRESSING ROOM • BEDROOM TWO • FAMILY BATHROOM • GARDEN ROOM/BEDROOM WITH EN-SUITE SHOWER ROOM • SUMMER KITCHEN/UTILITY ROOM/EXTENSIVE STORAGE VAULTS • PRIVATE SOUTH FACING WALLED REAR GARDEN • C-AH PERMIT PARKING • EXCEPTIONAL VIEWS FROM THE

UPPER FLOORS

PRICE ON APPLICATION

FREEHOLD

SOLE SELLING AGENTS



RESIDENTIAL SALES & ACQUISITIONS

020 7431 0000

28 Church Row, Hampstead, London NW3 6UP
email: info@marcusparfitt.com www.marcusparfitt.com

