



£185,000

🔑 TENURE: Freehold

📊 EPC RATING: D

💰 COUNCIL TAX BAND: B

Penkrige Stafford

Wolverhampton Road Penkrige
Stafford Staffordshire

🛏️ 3 🚿 1 🛋️ 2

In a market place short of opportunities for either the first time purchaser or buy to let, this is sure to be popular! Located on the fringes of Penkrige Village which has an array of amenities including a GP surgery, mini supermarkets, shops galore, great commuting links via train station and road via M54 & M6.

Great schooling from Nurseries to a College and everything in between. This ideal starter home in the form of a well presented end terraced has three bedrooms, a first floor bathroom, good size lounge, entrance porch/utility, kitchen diner, good size low maintenance rear garden and a garage situated in a separate block. With vacant possession and no upward chain... Book your viewing now!

- Well Presented End Terraced
- Ideal First Time Purchase
- Three Bedrooms & Family Bathroom
- Living Room, Kitchen Diner
- Garage In Separate Block
- Sought After Village Of Penkrige

You can reach us 9am to 9pm, 7 days a week

4 Crown Bridge, Penkrige, Staffordshire, ST19 5AA

01785 715555

hellopenkrige@dourishandday.co.uk



Entrance Porch

Being accessed through a double glazed entrance door and having a tiled floor, space for washing machine with work surface over, shelving. An internal door leads to:

Kitchen / Diner 14' 7" x 9' 7" (4.45m x 2.92m)

A good-sized kitchen diner having a range of matching units extending to base and eye level and fitted work surfaces with an inset sink unit and chrome mixer tap. Spaces for cooker and fridge. Part tiled and part laminate flooring, radiator, two double glazed windows to the rear elevation and internal French doors leading to:

Living Room 15' 4" x 14' 7" (4.67m x 4.44m)

Having a stunning feature wood burning fire, laminate floor, radiator, stairs leading to the first floor elevation, double glazed windows and double glazed French doors giving views and access to the rear garden.

First Floor Landing

Having access to loft space and a useful storage/airing cupboard which houses the gas central heating boiler.



You can reach us **9am to 9pm**, 7 days a week

4 Crown Bridge, Penkridge, Staffordshire, ST19 5AA

01785 715555

hellopenkridge@dourishandday.co.uk

Bedroom One 12' 0" x 8' 7" (3.65m x 2.61m)

Having built-in wardrobes, radiator and double glazed window to the rear elevation.

Bedroom Two 9' 5" x 8' 7" (2.88m x 2.61m)

Having built-in wardrobes, radiator and double glazed window to the front elevation.

Bedroom Three 8' 7" x 5' 10" (2.61m x 1.78m)

Having a radiator and double glazed window to the rear elevation.

Family Bathroom 6' 4" x 5' 7" (1.93m x 1.69m)

Having a suite comprising of a panelled bath with mixer shower attachment over, pedestal wash hand basin with chrome taps and low level WC. Part tiled walls, vinyl flooring, radiator and double glazed window to the front elevation.

Outside - Front

There is a small lawned garden with a paved pathway leading to the entrance door.

Outside - Rear

Having a paved patio seating area overlooking the remainder of the garden being mainly laid to lawn being enclosed by panel fencing and a timber gate leads to a pathway which in-turn leads to:

Garage 15' 8" x 8' 8" (4.78m x 2.65m)

Situated in a separate block, the property is the first garage on the left having a green up and over to the front elevation.

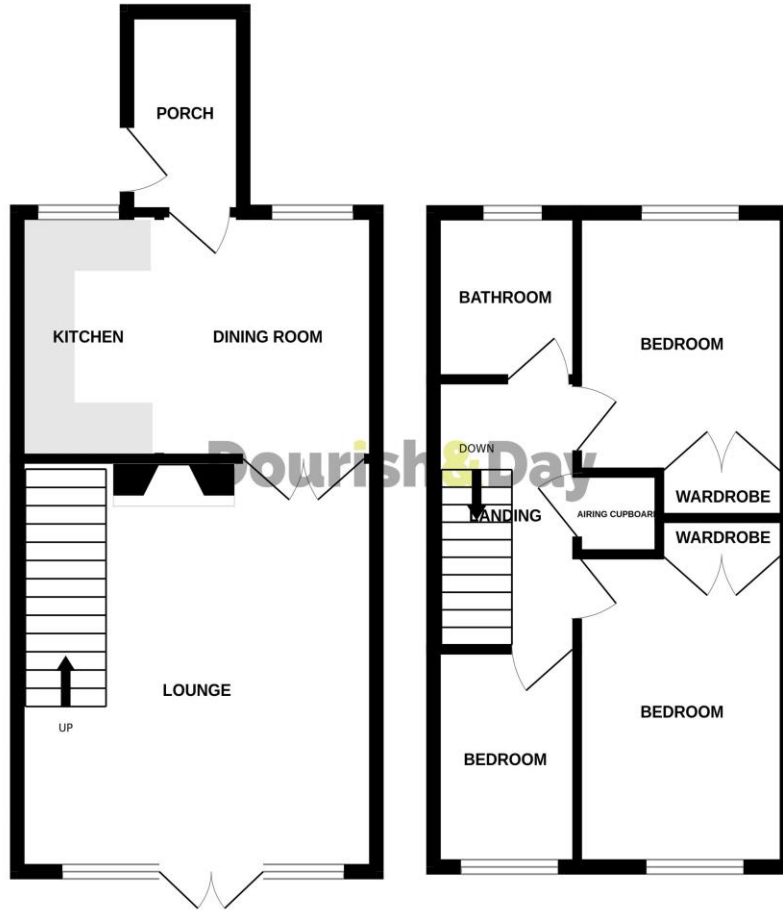
ID Checks

Once an offer is accepted on a property marketed by Dourish & Day estate agents we are required to complete ID verification checks on all buyers and to apply ongoing monitoring until the transaction ends. Whilst this is the responsibility of Dourish & Day we may use the services of MoveButler, to verify Clients' identity. This is not a credit check and therefore will have no effect on your credit history. You agree for us to complete these checks, and the cost of these checks is £30.00 inc. VAT per buyer. This is paid in advance, when an offer is agreed and prior to a sales memorandum being issued. This charge is non-refundable.

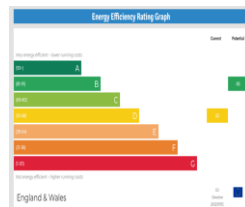


GROUND FLOOR

1ST FLOOR



Whilst every attempt has been made to ensure the accuracy of the floorplan contained here, measurements of doors, windows, rooms and any other items are approximate and no responsibility is taken for any error, omission or mis-statement. This plan is for illustrative purposes only and should be used as such by any prospective purchaser. The services, systems and appliances shown have not been tested and no guarantee as to their operability or efficiency can be given.
Made with Metropix ©2024



IMPORTANT NOTICE Dourish & Day for themselves and for the vendor or lessors of this property whose agents they are given notice that: (i) the particulars are set out as a general outline only for the guidance of intending purchasers or lessees, and do not constitute, nor constitute part of, an offer of contract, (ii) all descriptions, dimensions, references to condition and necessary permissions for use and occupation, and other details are given in good faith and are believed to be correct but any intending purchasers or tenants should not rely on them as statement or representation of fact but must satisfy themselves by inspection or otherwise as to the correctness of each of them, (iii) no person in the employment of Dourish & Day has any authority to make or give any representation or warranty whatever in relation to this property.

You can reach us **9am to 9pm**, 7 days a week

4 Crown Bridge, Penkridge, Staffordshire, ST19 5AA

01785 715555

helloopenkridge@dourishandday.co.uk