



**3-BED GROUND FLOOR  
APARTMENT WITH A  
PRIVATE GARDEN IN  
SAN ANTONIO, IBIZA**

**€631.920**



# 3-BED GROUND FLOOR APARTMENT WITH A PRIVATE GARDEN IN €631.920 SAN ANTONIO, IBIZA



**Stylish. Secure. Smart. All about THE views, sunsets and outdoor space!** Talking about outdoor spaces... these first-line apartments in San Antonio Bay are each complete either with **a garden, private rooftop, or spacious terrace.**

**Ready to move in, this ground floor 3-bed apartment has a private garden of 34m<sup>2</sup>.**

Besides that, you will have enough indoor space to prepare your favorite meals in an open-plan kitchen that connects perfectly with the living room. **A terrace of more than 15 m<sup>2</sup>** is fantastic for when you want to host your friends and family for a nice dinner during summer months. Built only with **the highest quality materials, you can enjoy the comfort of upscale bathrooms**, equipped with thermostatic hydromassage columns for your relaxation and general well-being.

Plus, it's not just about aesthetics and comfort. Each residence is equipped with smart home features for a life that's not just easier, but smarter. With home automation compatibility, you'll be able to control your domain at the touch of a button. There are 24/7 security cameras ensuring your peace of mind. And let's not forget the community services that cater to your every need...



**ALICIA GARCIA  
FERNANDEZ**

**alicia.garcia@letusibiza.com**  
**+34 620 84 63 70**

**PRICE: €631.920**

**PROPERTY TAXES ESTIMATE: €0**

**PROPERTY ID: DVI03I**

**BEDROOMS: 3**

**BATHROOMS: 2**

**INTERIOR SIZE: 90.02M2**

**PLOT SIZE: N/A**

**TERRACE SIZE: 16.8M2**

**LOCATION: SANT**

**ANTONI**

**DE**

**PORTMANY**





# 3-BED GROUND FLOOR APARTMENT WITH A PRIVATE GARDEN IN €631.920 SAN ANTONIO, IBIZA

LONG TERM RENTAL ESTIMATE (ANNUAL)

SHORT TERM RENTAL ESTIMATE (WEEKLY OR MONTHLY)

COMMUNITY COST (MONTHLY)

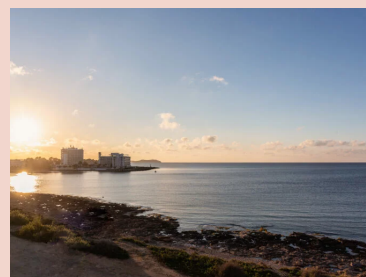
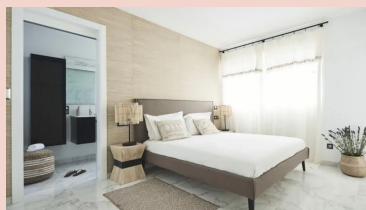
MAINTENANCE POOL AND/OR GARDEN (MONTHLY)

## SANT ANTONI DE PORTMANY , SANT ANTONI DE PORTMANY

Where it used to have quite a bad reputation, nowadays after major works on the harbour, it is becoming a popular port for sailingsport fanatics. There is a good amount of nice restaurants open all-year-round.



## LOCATION





# CONTACT

[info@letusibiza.com](mailto:info@letusibiza.com)

SPANISH: +34 620 846 370

ENGLISH: +34 620 686 816

FRENCH: +34 620 846 370

DUTCH: +34 653 378 193

GERMAN: +34 653 378 193

OTHER: +34 620 686 816



**ALICIA GARCIA  
FERNANDEZ**

[alicia.garcia@letusibiza.com](mailto:alicia.garcia@letusibiza.com)  
+34 620 84 63 70





