

22 Alton Road

Lower Parkstone  
Poole,  
BH14 8SN



22 Alton Road

Lower Parkstone

Poole,

BH14 8SN

*Guide price £1,100,000*

This impressive home sits in one of Lower Parkstone's most premier roads and offers 4 double bedrooms, 2 bathrooms, 2 reception rooms, utility room and garage. Private and well set back from the road, with a generous amount of parking and a secluded south facing rear garden makes this a great family home with room for further improvement if desired.

### *Summary of Accommodation*

South facing garden

Sold with no forward chain

Generous driveway with garage

Landscaped gardens and grounds

Close to a wide range of amenities

Catchment area for Baden Powell School

Four double bedrooms and two bathrooms





This impressive home extends to over 1,700 sq ft including an integral garage, and offers a choice of reception rooms including a well appointed kitchen with breakfast bar with far reaching views over the rear garden. The south facing garden is accessed via the outdoor staircase which is adjacent from the dining room.

Leading downstairs four double bedrooms are on offer including a generous principle bedroom with en-suite shower room and separate family bathroom. This unique family home is generous in size and offers contemporary features throughout.

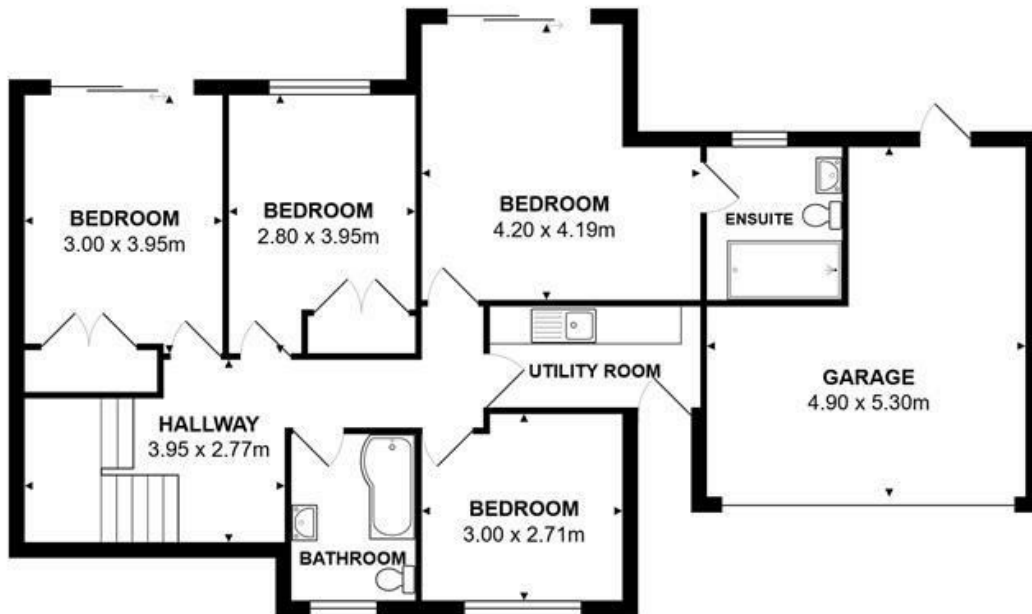


Outside the house is well set back from the road, offering privacy with a substantial front driveway and manicured gardens. To the rear the south facing, level garden offers a great space for family / social gatherings with an interesting mixture of trees.

Lilliput village is a short distance away, offering a plethora of shops and restaurants. A short distance beyond are the golden beaches the area is well renowned for.



**GROUND FLOOR**



**LOWER GROUND FLOOR**

**Total Area: 161.5 m<sup>2</sup> (excluding balcony)**

All measurements are approximate and for display purposes only

## Lloyds Property Group

PROPERTY NAME

22 Alton Road

LOCATION

BH14 8SN

TOTAL FLOOR AREA

1732.00 sq ft

COUNCIL TAX

Band F BCP (Poole)

VIEWING ARRANGEMENTS

Telephone: +44 (0) 1202 708044

Email: [enquiries@lloydspropertygroup.com](mailto:enquiries@lloydspropertygroup.com)

Ref:

Monday - Friday 09:00 - 18:00

Saturday 09:00 - 16:00

Sunday By appointment only

*Illustration for identification purposes only, measurements are approximate, not to scale*