

21 Blake Hill Crescent

Lilliput
Poole, Dorset
BH14 8QW



21 Blake Hill Crescent

Lilliput
Poole, Dorset
BH14 8QW

Guide price £1,400,000

A charming character detached family home situated in the prestigious location of Blake Hill Crescent in Lilliput. Planning permission has just been approved for a double storey extension for an open plan kitchen space and a fourth bedroom on the first floor.

Summary of Accommodation

Immaculately presented, substantial family home
1/4 of an acre level plot

Luxury fitted open plan kitchen/living room with open fireplace

Separate utility and downstairs wc

Prestigious sought after location

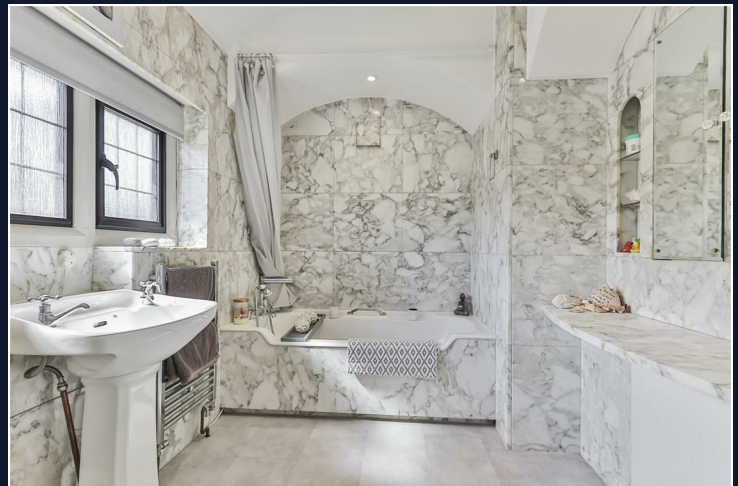
Planning approved for a double story extension

Charming original features remaining

Galleried landing hall

Gas central heating and double glazing

Close proximity to Parkstone Golf Course





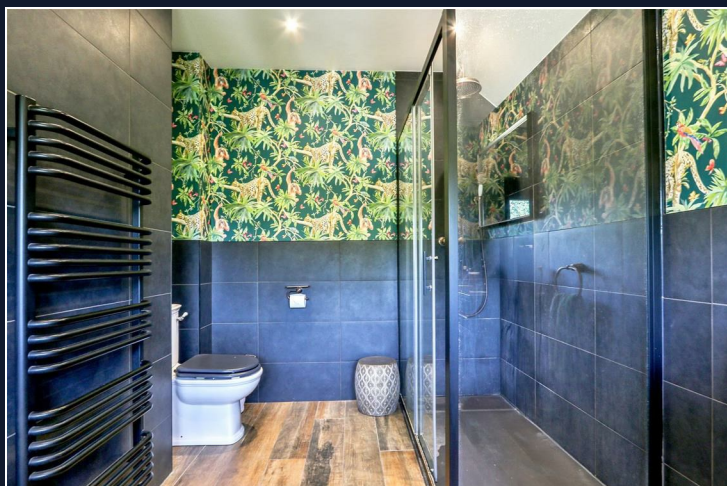
Nestled on Blake Hill Crescent, Lilliput, this delightful detached house offers a perfect blend of comfort and space. Built in a traditional style, the property boasts a generous 1,835 square feet of living space, making it an ideal family home.

Upon entering, you will find three well-proportioned reception rooms, providing ample space for relaxation and entertaining. These versatile areas can be tailored to suit your lifestyle, whether you envision a cosy sitting room, a formal dining area or a vibrant playroom for the children. The natural light that floods these rooms creates a warm and inviting atmosphere throughout.

The house features three spacious bedrooms, each designed to offer a peaceful retreat at the end of the day. With two bathrooms, morning routines will be a breeze, ensuring convenience for both family members and guests alike.

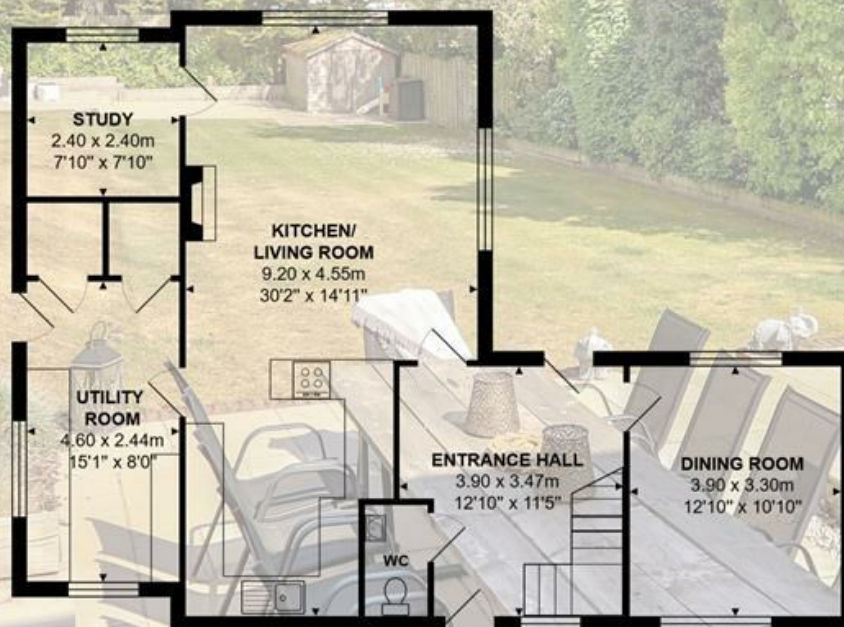
Outside, the property includes parking for multiple vehicles, adding to the practicality of this lovely home. The surrounding area of Sandbanks is known for its beautiful beaches, scenic parks and vibrant community, making it a desirable location for families and individuals alike.

This property presents a wonderful opportunity to create lasting memories in a well-established neighbourhood. With its charming features and ample space, it is sure to appeal to those seeking a comfortable and inviting home. Do not miss the chance to make this delightful house your home.





First Floor



Ground Floor

Total Area: 170.5 m² ... 1835 ft²

All measurements are approximate and for display purposes only

Lloyds Property Group

PROPERTY NAME

21 Blake Hill Crescent

TOTAL FLOOR AREA

1808.35 sq ft

VIEWING ARRANGEMENTS

Telephone: +44 (0) 1202 708044

Email: enquiries@lloydspropertygroup.com

LOCATION

BH14 8QW

COUNCIL TAX

Band G BCP (Poole)

Ref: 3627

Monday - Friday 09:00 - 18:00

Saturday 09:00 - 16:00

Sunday By appointment only

Illustration for identification purposes only, measurements are approximate, not to scale