

23 Sherwood Avenue

Whitecliff
Poole, Dorset
BH14 8DH



23 Sherwood Avenue

Whitecliff
Poole, Dorset
BH14 8DH

Offers in excess of £800,000

An incredibly well appointed 4 bedroom semi-detached family home that has recently undergone a professional refurbishment. Offering generous outside space both to the front and rear, along with a south facing manicured rear garden. Situated within the popular location of Whitecliff this home offers excellent amenities and easy access to the areas award winning Blue Flag beaches. With a combination of character features and modern comforts viewing is highly advised to avoid disappointment.

Summary of Accommodation

No onward chain

Generous parking for multiple cars

Fully refurbished / extended to superb standard

Generous plot size with south facing rear garden

Principal bedroom with en-suite and walk in wardrobe

Extended 1930's 4 bedroom semi detached family home

Family bathroom with 2 additional en-suite shower rooms

Outstanding local community with excellent local amenities

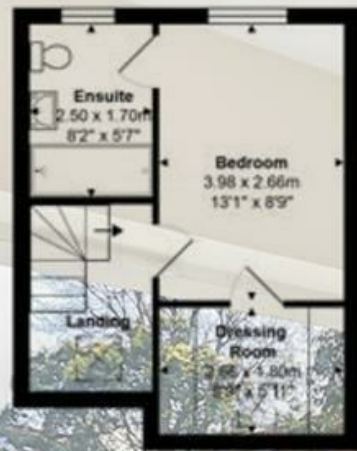




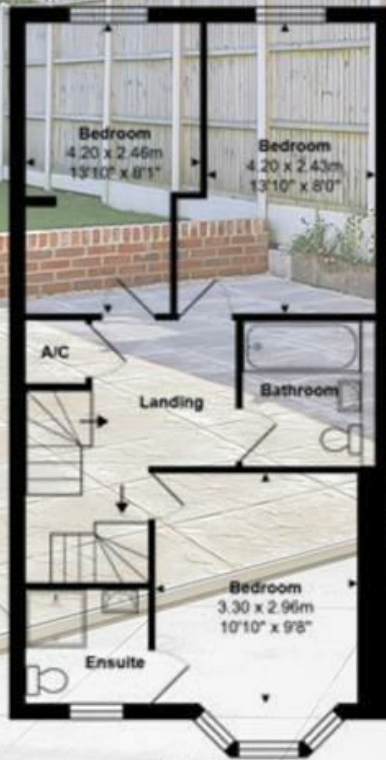
This charming 1930's semi detached family home has recently undergone a superb refurbishment throughout and certainly won't disappoint. Offering 4 bedrooms, 3 bathrooms and a generous plot with a south facing manicured garden. Offering a wonderful kitchen/dining/family room plus 1 further reception room, utility room, cloakroom and off road parking to the front for multiple cars. There is further off road parking to the side for a boat or larger vehicle.



The home is ideally situated close to local amenities and Whitecliff Park. Internally the home fuses some lovely character features, along with modern internal décor. An excellent spacious home, ideal for a growing family.



Second Floor



First Floor



Ground Floor

Total Area: 126.7 m² ... 1363 ft²

All measurements are approximate and for display purposes only

Lloyds Property Group

PROPERTY NAME

23 Sherwood Avenue

LOCATION

BH14 8DH

TOTAL FLOOR AREA

1363.00 sq ft

COUNCIL TAX

Band D BCP (Poole)

VIEWING ARRANGEMENTS

Telephone: +44 (0) 1202 708044

Email: enquiries@lloydspropertygroup.com

Ref: 3600

Monday - Friday 09:00 - 18:00

Saturday 09:00 - 16:00

Sunday By appointment only

Illustration for identification purposes only, measurements are approximate, not to scale