

5B Turks Lane

Whitecliff
Poole, Dorset
BH14 8EW



5B Turks Lane

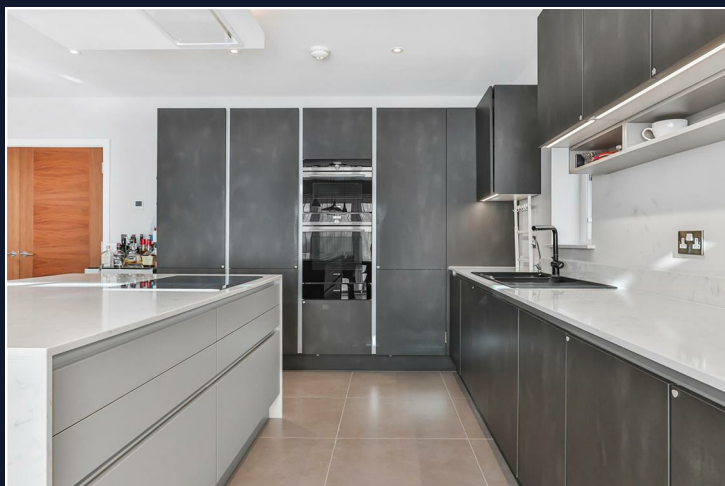
Whitecliff
Poole, Dorset
BH14 8EW

Guide price £1,350,000

SENSATIONAL MODERN HOME with HARBOUR GLIMPSES!! Situated in a quiet lane overlooking Whitecliff Park just MOMENTS from the WATERS EDGE & one of the areas PREFERRED MARINAS. With 4 BEDS, 3 BATHS & CHOICE OF SITTING AREAS & A SUNNY GARDEN this stylish home must be viewed to fully appreciate!

Summary of Accommodation

- Marina nearby
- Unusual design
- Amazing location
- Renowned developer
- Beautifully appointed
- High end specification
- Overlooks Whitecliff Park
- Close to the waters edge
- Extends to just under 2,600 sq ft
- Luxury kitchen by Kitchen Elegance





Nestled in Turks Lane, Poole, this delightful house presents an excellent opportunity for those seeking a comfortable and modern home. The property boasts a prime location, offering easy access to local amenities, schools and the stunning coastline that Poole is renowned for.

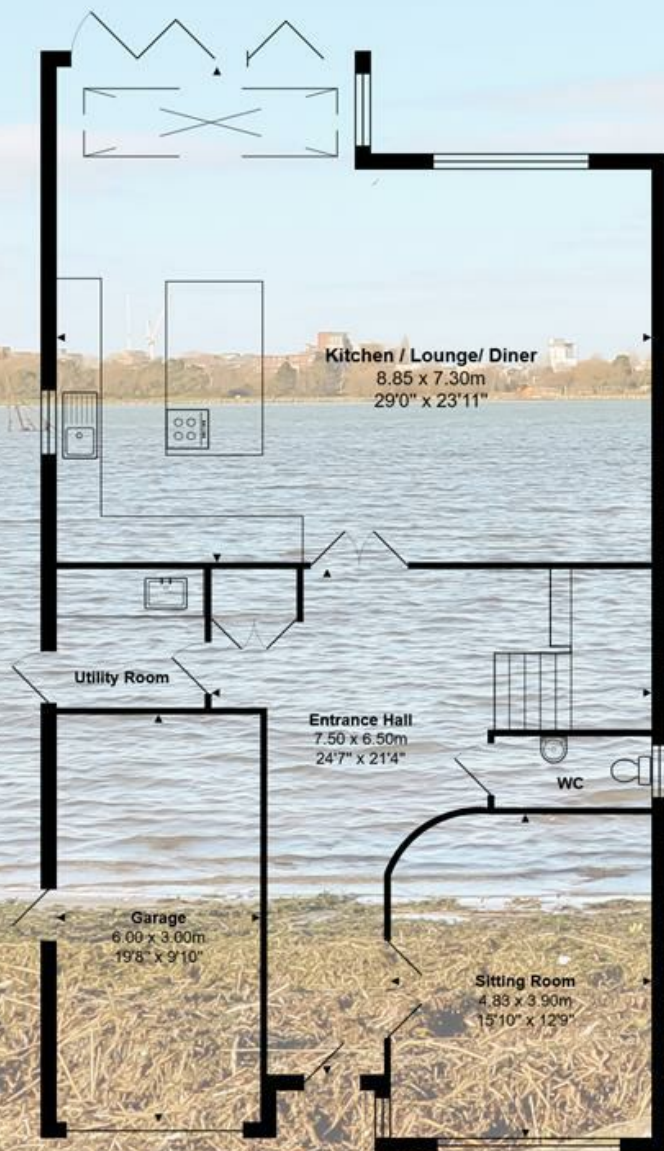
As you approach the house, you will be greeted by a contemporary and welcoming exterior, setting the tone for what lies within. The interior of the property is thoughtfully designed, providing a harmonious blend of space and functionality. With ample living areas, this home is perfect for both relaxation and entertaining.

The well-appointed kitchen is a highlight, featuring Siemens appliances and plenty of storage, making it a joy for any home cook. The adjoining dining area creates a perfect setting for family meals or gatherings with friends. Natural light floods the living spaces, enhancing the overall atmosphere of warmth and comfort.

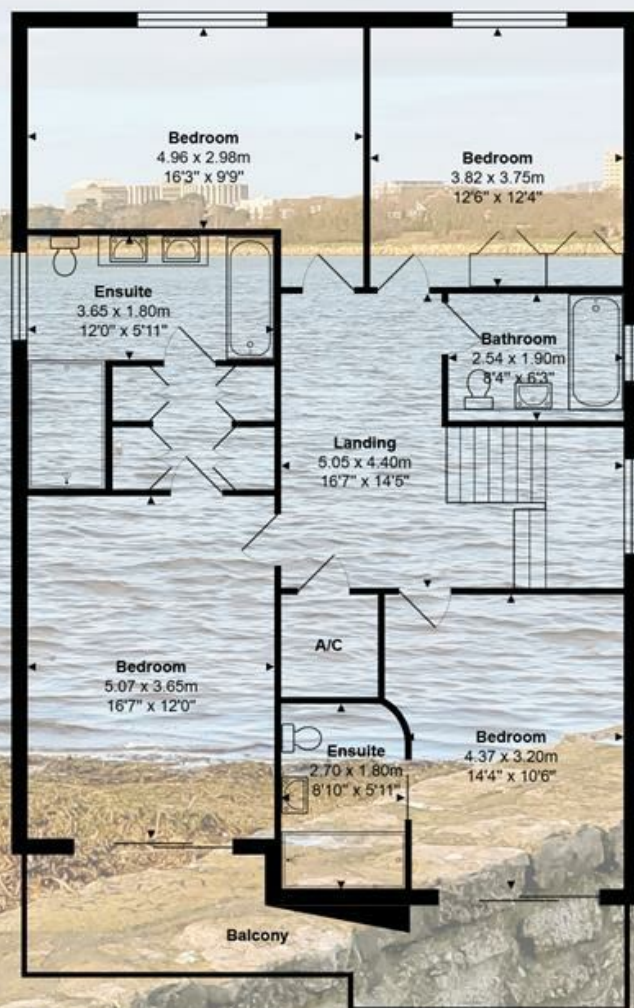
The bedrooms are generously sized, offering a peaceful retreat at the end of the day. Each room is designed to provide a tranquil environment, ensuring restful nights and rejuvenating mornings. The bathroom facilities are modern and well-maintained, catering to the needs of a busy household.

Outside, the property benefits from a lovely garden space, ideal for enjoying the fresh air or hosting summer barbecues. The surrounding area is peaceful, yet conveniently located near transport links, making it easy to explore the wider region.

In summary, this house in Turks Lane is a wonderful opportunity for anyone looking to settle in Poole. With its appealing features, excellent location, and potential for personalisation, it is sure to attract interest from a variety of buyers. Do not miss the chance to make this charming property your new home.



Ground Floor



First Floor

Total Area: 240.8 m² ... 2592 ft² (excluding balcony)

All measurements are approximate and for display purposes only

Lloyds Property Group

PROPERTY NAME

5B Turks Lane

LOCATION

BH14 8EW

TOTAL FLOOR AREA

2592.00 sq ft

COUNCIL TAX

Band G BCP (Poole)

VIEWING ARRANGEMENTS

Telephone: +44 (0) 1202 708044

Email: enquiries@lloydspropertygroup.com

Ref: 3568

Monday - Friday 09:00 - 18:00

Saturday 09:00 - 16:00

Sunday By appointment only

Illustration for identification purposes only, measurements are approximate, not to scale