

22 Rosemount Road

(Flat 5)

Bournemouth, Dorset

BH4 8HB





# 22 Rosemount Road

(Flat 5)

Bournemouth, Dorset

BH4 8HB

*Offers in excess of £375,000*

Tucked away at the end of Rosemount Road is this beautiful two double bedroom first floor apartment. The property is located just a five-minute walk from the pristine

Blue Flag beaches which can be accessed via a private residents' pathway through to Alum Chine. This home offers the best of coastal living right on your doorstep.

## *Summary of Accommodation*

Stunning period apartment

Two double bedrooms

Garage

Residents private footpath to Alum Chine and beaches beyond

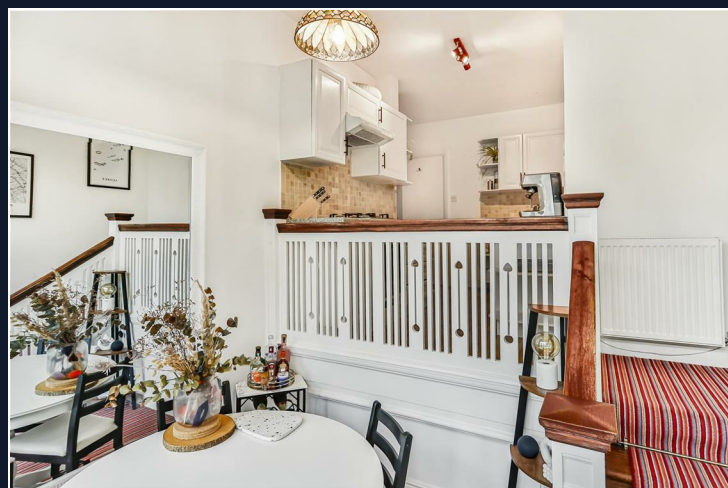
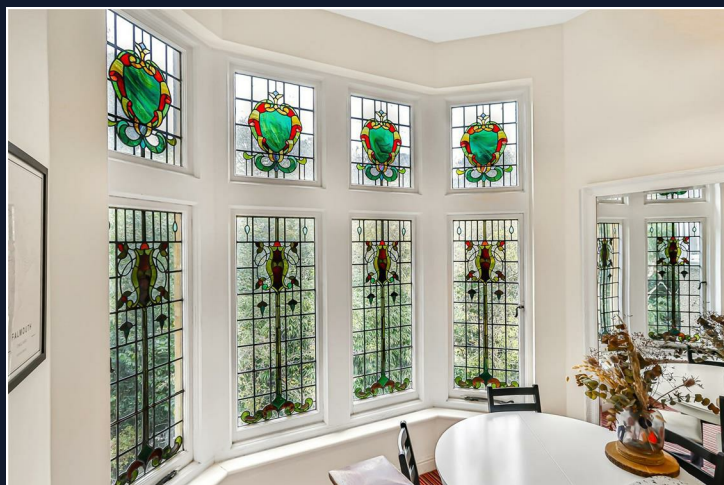
Share of Freehold

South facing communal garden

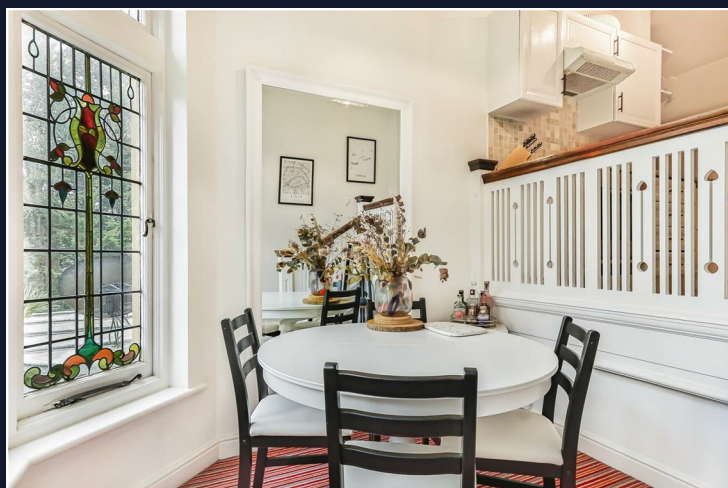
Ornate coloured glass windows

Five minute walk to Blue Flag beaches

Walking distance to Westbourne Village







Elegantly presented, this apartment features two spacious double bedrooms, separate reception area, open plan kitchen/diner providing ample space for social entertaining and a large bathroom offering a peaceful environment to relax in comfort. The home has generously high ceilings giving it an airy feel, coupled with its ornate coloured stained glass windows, it adds a touch of elegance and character to the living spaces.

Step outside to enjoy the south-facing communal garden, perfect for soaking up the sun and enjoying outdoor gatherings. The property also includes a convenient garage, providing secure parking and additional storage.

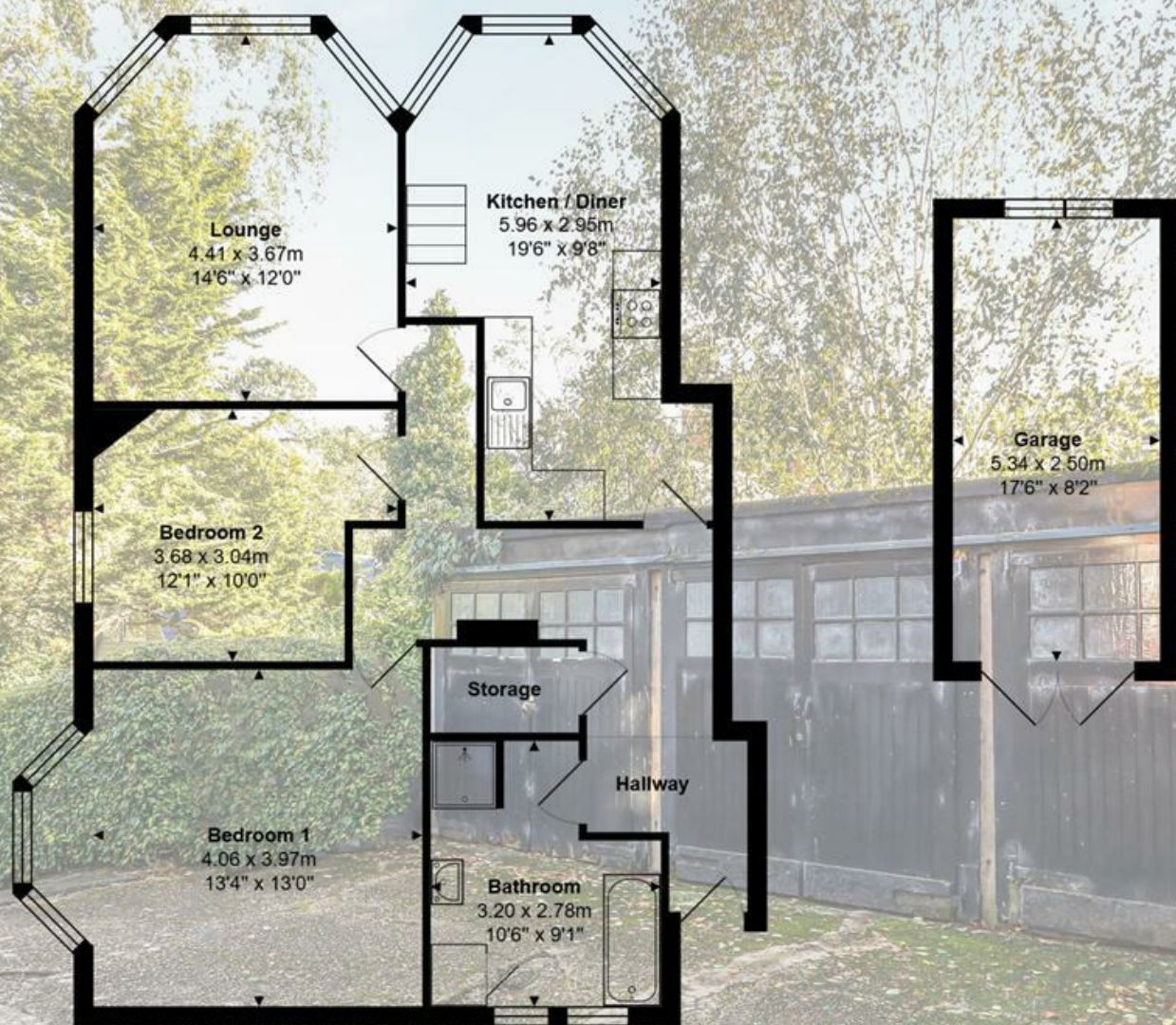


The vibrant Westbourne Village is just a short walk away, offering a delightful selection of shops, cafes and restaurants.

With only seven apartments within the converted house, the property is offered with a share of the freehold.

Don't miss the opportunity to make this exquisite home your own, blending timeless style with contemporary comforts. Schedule a viewing today!





Total Area: 97.3 m<sup>2</sup> ... 1047 ft<sup>2</sup> (excl garage)

All measurements are approximate and for display purposes only

## Lloyds Property Group

PROPERTY NAME

22 Rosemount Road

LOCATION

BH4 8HB

TOTAL FLOOR AREA

914.93 sq ft

COUNCIL TAX

Band C BCP (Bournemouth)

VIEWING ARRANGEMENTS

Telephone: +44 (0) 1202 708044

Email: [enquiries@lloydspropertygroup.com](mailto:enquiries@lloydspropertygroup.com)

Ref: 3570

Monday - Friday 09:00 - 18:00

Saturday 09:00 - 16:00

Sunday By appointment only

*Illustration for identification purposes only, measurements are approximate, not to scale*