

2A Marina Drive

Lilliput
Poole, Dorset
BH14 8HB



2A Marina Drive

Lilliput
Poole, Dorset
BH14 8HB

Offers in excess of £950,000

Step into a world of elegance with this stunning detached Art Deco style home, where vintage charm meets modern living. Redeveloped within the last 10 years to a high standard, this spacious property boasts four beautifully appointed bedrooms, three luxurious bathrooms and provides ample space for families of all sizes.

Summary of Accommodation

- Art Deco style detached house
- Four bedrooms
- Three bathrooms
- South-West facing garden
- Open planned kitchen/diner
- Off road parking for four vehicles
- Double height entrance hall
- Second courtyard garden
- No forward chain





On entering you are greeted by an impressive double height hallway which is bathed in natural light from its cleverly designed windows. The oak staircase with its sleek clean lines, really showcase the home's unique architectural features.

Double, sliding oak doors open to an inviting open plan fully fitted kitchen/diner/reception room, designed for both functionality and style. This heart of the home features high-end kitchen work tops and appliances with plenty of room for entertaining. Natural light floods the space from the bi-fold doors, creating a warm and welcoming atmosphere.

Off the hallway and separate to the kitchen is the utility room, housing the combination boiler and washing facilities, which provides side access to the property. The hall leads to the first of the double bedrooms and modern downstairs bathroom.

A large second reception area is located to the rear of the home, with patio doors opening to the second garden which is paved.

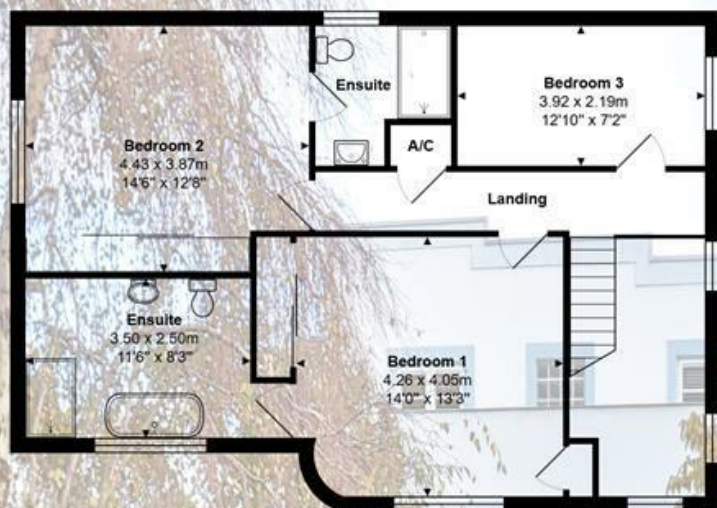
Upstairs are two further good size double bedrooms, both with en-suites, along with a fourth bedroom.

The property includes off-road parking for up to four vehicles. The large decked area is southwest-facing, perfect for enjoying sunny afternoons and evening gatherings. The beautifully landscaped outdoor space offers a tranquil escape, complete with established planting.

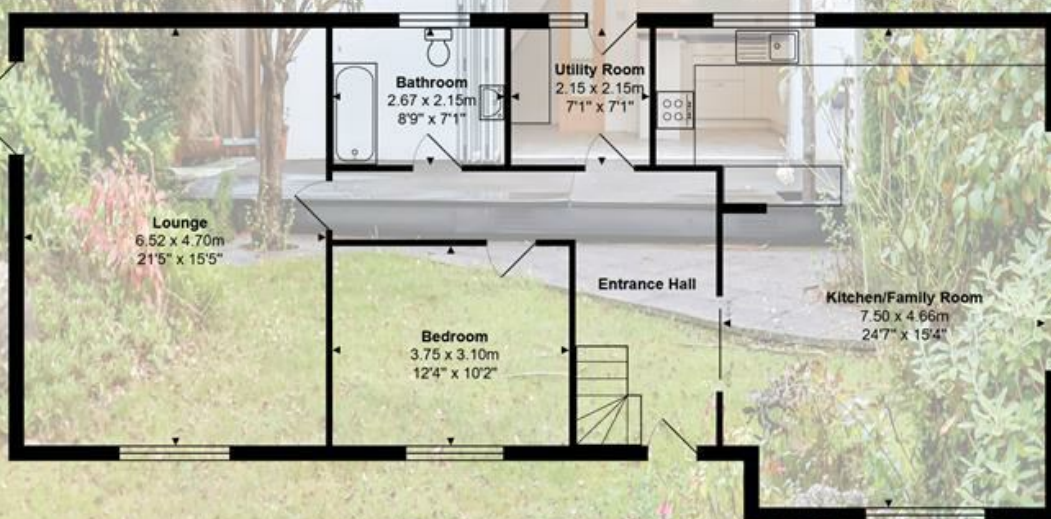
The world famous Sandbanks Peninsula and Poole Harbour are a little over a mile away and offer safe and sandy beaches, yacht clubs, marinas as well as an abundance of water sports.

In Lilliput you will find Salterns Marina, two mini supermarkets, surf and bike shops as well as the Koh Thai restaurant, Longs fish & chip takeaway and the award winning Mark Bennetts artisan bakery and coffee shop.

Don't miss the opportunity to make this exquisite home your own, blending timeless style with contemporary comforts. Schedule a viewing today!



First Floor



Ground Floor

Total Area: 178.5 m² ... 1922 ft²

All measurements are approximate and for display purposes only

Lloyds Property Group

PROPERTY NAME

2A Marina Drive

LOCATION

BH14 8HB

TOTAL FLOOR AREA

1922.00 sq ft

COUNCIL TAX

Band F BCP (Poole)

VIEWING ARRANGEMENTS

Telephone: +44 (0) 1202 708044

Email: enquiries@lloydspropertygroup.com

Ref: 3569

Monday - Friday 09:00 - 18:00

Saturday 09:00 - 16:00

Sunday By appointment only

Illustration for identification purposes only, measurements are approximate, not to scale