

Flat 9 Chine Court

Chine Crescent Road
Bournemouth, Dorset
BH2 5BN



Flat 9 Chine Court

Chine Crescent Road
Bournemouth, Dorset
BH2 5BN

Guide price £290,000

An immaculately presented apartment, one of twelve homes in an attractive purpose built development constructed in 2009. Located on the top floor (4th), with gas fired underfloor heating. The apartment offers spacious and well-proportioned accommodation.

Summary of Accommodation

Stylish and contemporary apartment

Top floor (4th) floor

Two bedrooms, two bathrooms

Modern fitted kitchen

Lounge/diner

100 to 150 metres to sandy beach at Durley Chine

Ideal main home or lock up and leave holiday home

Pets are allowed under licence

Currently rented and achieving £1,400 pcm

Communal garden for residents to enjoy





The well-proportioned accommodation, including a cosy lounge/diner, two double bedrooms (the main with its own en-suite shower room) and an excellent range of fitted bedroom furniture.

Bedroom 2 boasts a large walk in closet and is served by the stylish family bathroom. The well equipped kitchen features a useful breakfast bar, slimline dishwasher, fridge/freezer, 4 ring gas hob, Neff oven and grill and washer dryer.

There is plenty of storage in the apartment and there is also lots of surface guest parking spaces. The owners have the benefit of secure underground parking with lift access.

Chine Court is nestled in a charming, tree-lined road, ideally positioned to enjoy everything the area has to offer. The vibrant Bournemouth town centre is a leisurely walk away, providing a wide range of shopping and leisure options. In the opposite direction, Westbourne offers a more relaxed atmosphere with an eclectic mix of café bars, great restaurants, boutique shops as well as an M&S Food Hall.

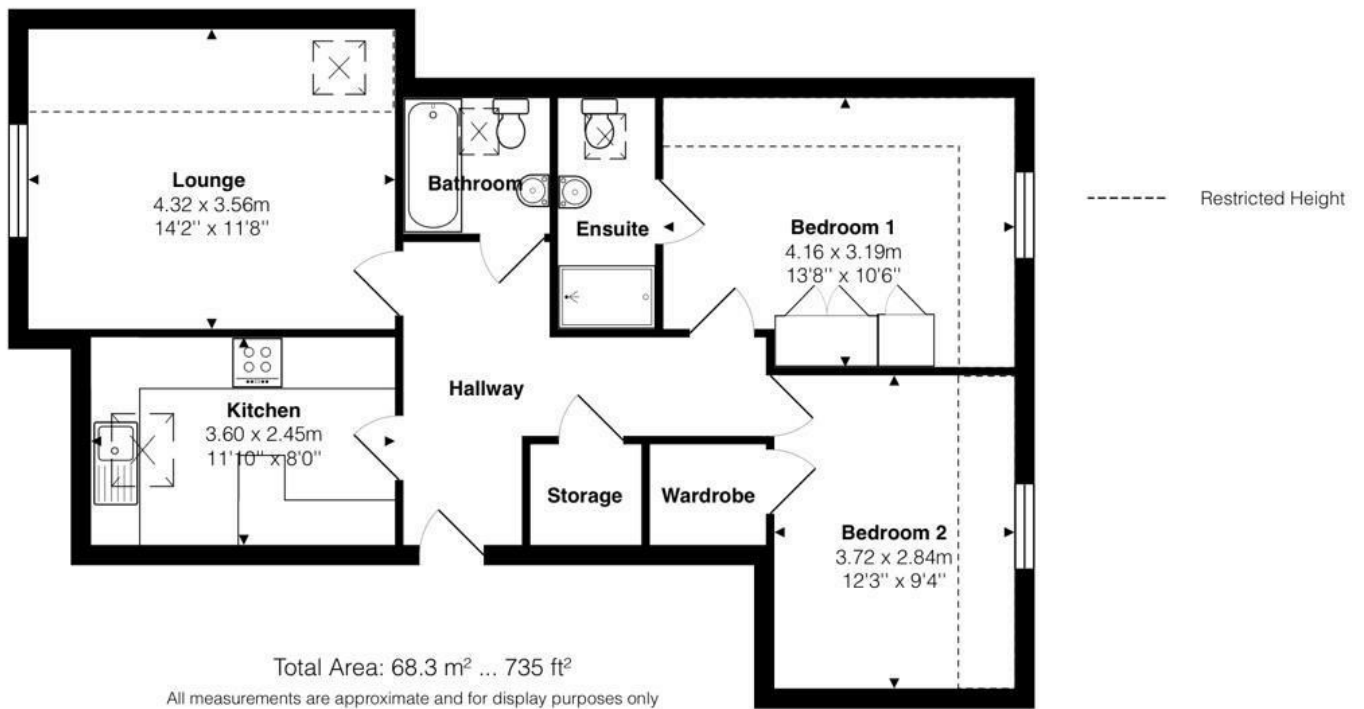
For beach lovers, the golden sandy beach at Durley Chine and the scenic promenade are approximately 100-150 meters away, extending to Southbourne in one direction, and to the famous Sandbanks Peninsula in the other.

Tenure: Leasehold (125 years from April 24, 2009)

Service Charges: £3,116.80 per annum

Ground Rent: £300 per annum

Council Tax Band: C



Lloyds Property Group

PROPERTY NAME

Flat 9 Chine Court

LOCATION

BH2 5BN

TOTAL FLOOR AREA

735.00 sq ft

COUNCIL TAX

Band C BCP (Poole)

VIEWING ARRANGEMENTS

Telephone: +44 (0) 1202 708044

Email: enquiries@lloydspropertygroup.com

Ref: 3556

Monday - Friday 09:00 - 18:00

Saturday 10:00 - 16:00

Sunday By appointment only

Illustration for identification purposes only, measurements are approximate, not to scale